

Sliding Door Units

Sliding Door Units

HRUA

Product Image

Extrusions When HRUA5 Selected

Extrusions When HRUA6 Selected

⚠ This product requires assembly.

HRUB

Product Image

Extrusion When HRUB5 Selected

Extrusion When HRUB6 Selected

⚠ This product requires assembly.

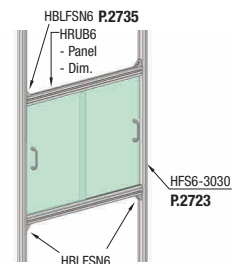
Part Number	Panel		W (Width) 1 mm Increments	H (Height) 1 mm Increments	A Opening Dimensions	Components								
	Type	No.				Extrusion A Part Number	Extrusion B Part Number	Fastening Parts Part Number	Quantity	Slide Spacers Part Number	Quantity	Handle Part Number	Quantity	
HRUA	5	Acrylic Clear	AC Thickness 5 mm	500-2000	300-900	W/2-56.5	HFS5-2020	HFHRF5-2020	SCB5-25	4	HRLSP	2	HHDS90	2
	6	Polycarbonate Clear	PC Thickness 5 mm	500-2000	300-900	W/2-66.5	HFS6-3030	HFHRF6-3030	SCB8-40	4	HRLSP	2	HHDS90	2
HRUB	5	PET Clear	PY Thickness 5 mm	500-1900	300-900	W/2-36.5	—	HFHRF5-2020	—	—	—	2	HHDS90	2
	6	Anti-Static PVC Clear	ST Thickness 5 mm	500-1900	300-900	W/2-36.5	—	HFHRF6-3030	—	—	—	2	HHDS90	2

Part Number Example **HRUA6** - **AC** - **1200** - **750**

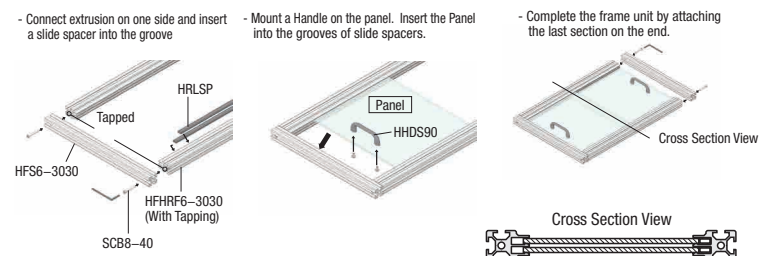
Thickness	Panel	Material Rate	
5 mm	AC	Acrylic (Clear)	x1.0
	PC	Polycarbonate (Clear)	x1.3
	PY	PET (Clear)	x0.9
	ST	Anti-Static PVC (Clear)	x1.3

Application Example

How to Attach HRUB



How to Assemble HRUA6



Sliding Door Extrusions / Slide Rails & Spacers / Mounting Plates

Aluminum

Sliding Door Extrusions / Slide Rails & Spacers / Mounting Plates - Aluminum

Aluminum Extrusions for Sliding Door

HFHRF5-2020

HFHRF6-3030

HFHRT6-3030

Applicable to panels of 5 mm thickness
Material: A6N01SS-T5 Aluminum Alloy
Surface Treatment: Clear Anodize

Slide Rails

HRLFL

Applicable to panels of 5 mm thickness
Material: A6N01SS-T5 Aluminum Alloy
Surface Treatment: Clear Anodize

Attachment Plates

HRLPL6 Connect a slide rail and a support extrusion
HRLPL8

Material: Low Carbon Steel
Surface Treatment: Bright Chromate

Slide Spacers

HRLSP To be inserted into Slide Rail's two bottom rows or three bottom rows

Type	Material	Heat Resistant Temperature
HRLSP	Polyethylene (Black)	-45-80°C

Application Example

Aluminum Extrusions for Sliding Door

Part Number	L 0.5 mm Increments	Mass kg/m	Sectional Area mm ²	Cross Sectional Moment of Inertia mm ⁴	
				I _x	I _y
HFHRF5-2020	50-4000	0.83	308	3.16 x 10 ⁴	1.25 x 10 ⁴
HFHRF6-3030		1.43	528	7.18 x 10 ⁴	4.13 x 10 ⁴
HFHRT6-3030		1.43	529	8.11 x 10 ⁴	4.62 x 10 ⁴

Slide Rails

Part Number	L 1 mm Increments	Applicable Extrusion (Series)	Mass kg/m	Sectional Area mm ²
HRLFL	50-3000	HFS6 HFS8 HFS8-45	0.716	265

Slide Spacers

Part Number	Length mm	Part Number	Length mm
HRLSP	2000	HRLSP-SET	2000

Attachment Plates

Part Number	Applicable Extrusion (Series)	Accessories				
		Screws	Quantity	Nuts	Quantity	
HRLPL	6	HFS6	CBM6-10	2	HNTT6-6	2
	8	HFS8	CBM6-10	1	HNTT6-6	1
		HFS8-45	CBM6-15*	1	HNTT8-6*	1

*Extrusion side mounting with Screws and Nuts

Part Number Example **HFHRF6-3030** - **1500** - **TPW**

Part Number Alterations **HFHRF6-3030** - **1500** - **TPW**
⚠ Applicable to HFHRF and HFHRT only

Part Number - **L**
HFHRF6-3030 - **1200**
HRLFL - **300**
HRLSP
HRLPL6

Alterations Code	Tapping		
	LTP	RTP	TPW
Spec.	Tapping on the left end face Tap Shape HFHRF5- M5-Depth 15 HFHRF6, HFHRT6- M8-Depth 24	Tapping on the right end face Tap Shape HFHRF5- M5-Depth 15 HFHRF6, HFHRT6- M8-Depth 24	Tapping on both ends Tap Shape HFHRF5- M5-Depth 15 HFHRF6, HFHRT6- M8-Depth 24

HFHRF5 *When H dimension is less than 318, design with H-60.
HFHRF6, HFHRT6 *When H dimension is less than 325, design with H-74.

Using HRLFL Slide Rails

Assembly Drawing

When H dimension is less than 300, design with H-30.

2980

There's more on the web: misumiusa.com

Check out misumiusa.com for the most current pricing and lead time.

2981

Aluminum Extrusion Units