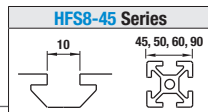
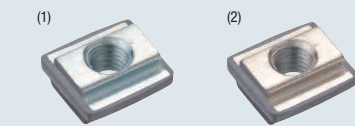


# Pre-Assembly Insertion Stopper / Spring Nuts

For HFS8-45 Series Aluminum Extrusions 45, 50, 60, 90 mm Square

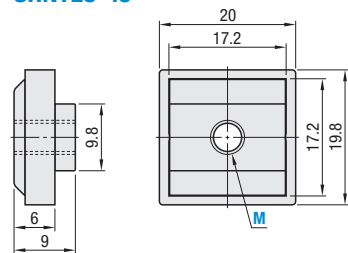


## Stopper Integrated Nuts



RoHS 10

## HNTe8-45 SHNTE8-45



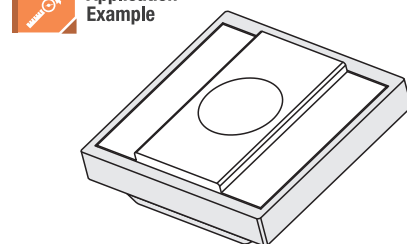
Reference Tightening Torque (N·m)	
M	1010 Carbon Steel Equivalent
8	23.5

Type	Material		
	Main Body	Stopper	Surface Treatment
(1) HNTe8-45	1010 Carbon Steel	Polypropylene	Trivalent Chromate
(2) SHNTE8-45	304 Stainless Steel	—	—

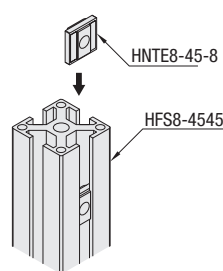
Part Number	M			
HNTe8-45	4	5	6	8
SHNTE8-45	4	5	6	8

Part Number Example: HNTe8-45 - 8

## Application Example



Integrated Pre-Assembly Insertion Nuts and Stoppers.



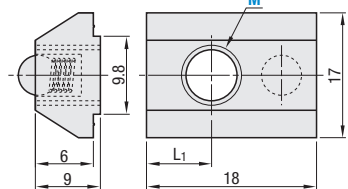
The nuts maintain their position (even in vertical extrusions).

## Pre-Assembly Insertion Spring Nuts

RoHS 10

- HNTU8 1010 Carbon Steel
- PACK-HNTU8 1010 Carbon Steel, 100/pkg.
- HNTUV8 Thread Locking Adhesive / 1010 Carbon Steel
- HNTUZ8 Thread Locking Resin Coating / 1010 Carbon Steel
- SHNTU8 304 Stainless Steel
- PACK-SHNTU8 304 Stainless Steel, 100/pkg.

Reference Tightening Torque (N·m)	
M	1010 Carbon Steel / 304 Stainless Steel (Sintering)
8	23.5



Type	Materials			
	Body	Ball	Springs	Surface Treatment
(1) HNTU8	1010 Carbon Steel	304 Stainless Steel	Spring Steel (ASTM A228)	Trivalent Chromate
(2) PACK-HNTU8				
(3) HNTUV8				
(4) HNTUZ8	304 Stainless Steel	304 Stainless Steel	304 Stainless Steel	—
(5) SHNTU8				
(6) PACK-SHNTU8				

Part Number	M				L <sub>1</sub>	
HNTU8 1010 Carbon Steel	3	4	5	6	8	6
HNTUV8 (Thread Locking / 1010 Carbon Steel)					8	
HNTUZ8 (Thread Locking / 1010 Carbon Steel)					8	5.5
SHNTU8 (304 Stainless Steel)	4	5	6	8	8	

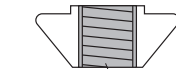
## Bulk Packages, 100/pkg.

Part Number	M				L <sub>1</sub>
PACK-HNTU8 1010 Carbon Steel Equivalent					6
PACK-SHNTU8 304 Stainless Steel Equivalent	4	5	6	8	5.5

Part Number Example: HNTU8 - 8

## Application Example

### Thread Locking Type



Thread locking compound applied inside of the tap.

Effect of Thread Locker (Reference)

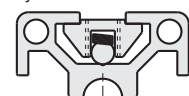
Nuts have thread locker applied on the inside of tap. It reduces loosening caused by vibration during transportation and operation of equipment.

**Thread Locking Adhesive:** A microencapsulated anaerobic adhesive prevents thread loosening. Note that it requires a set up time (72 hours at room temperature 25°C). The locking property is lost once loosened.

**Resin Coating:** Resin is coated along the threads. Although the thread locking may be less than the adhesive type, it can be used repeatedly and without set up time.

## Nuts maintain position (even in vertical extrusions).

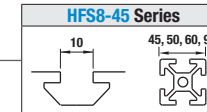
Built-in spring maintains position. Moves easily in the slot when pressed slightly by hand.



Features	Loosening Torque After Tightening (1st Time)	Remarks
Without Thread Locker	17.9 N·m	—
Thread Locking Adhesive Type	25.6 N·m	Test Conditions: Measured value (HNTV8-8) when a bolt is loosened after drying for 72 hours at room temperature (25°C), after tightened at 23.5 N·m.
Thread Locking Resin Coating Type	21.8 N·m	Thread locking effect decreases after repeated use. Loosening Torque at 5 Repeats: 20.3N·m Measurement with HNTV8-8

# Pre-Assy. Insertion Nuts for Aluminum Extrusions / Stoppers / Others

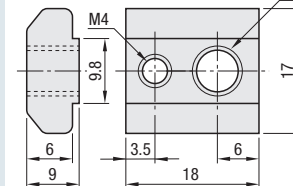
For HFS8-45 Series Aluminum Extrusions 45, 50, 60, 90 mm Square



## Pre-Assembly Insertion Lock Nuts

RoHS 10

## HNTC8



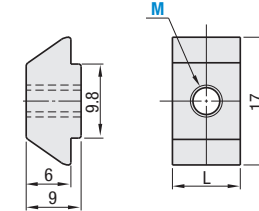
Reference Tightening Torque (N·m)	
M	1010 Carbon Steel Equivalent
8	23.5

Material: 1010 Carbon Steel Equivalent  
Surface Treatment: Trivalent Chromate

## Pre-Assembly Insertion Short Nuts

RoHS 10

## HNTJ8 PACK-HNTJ8 100/pkg.



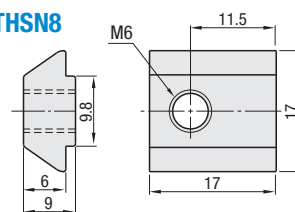
Material: 1010 Carbon Steel Equivalent  
Surface Treatment: Trivalent Chromate

## Pre-Assy. Insertion Eccentric Nuts

RoHS 10

\*Electrically conductive

## HNTHS8

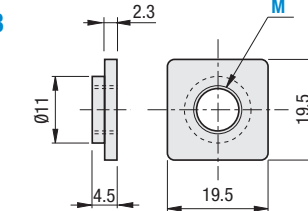


Material: 316 Stainless Steel or Equivalent (Sintering)

## Pre-Assembly Insertion Square Nuts

RoHS 10

## HNKK8

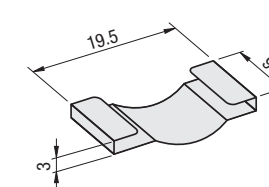


100 pcs. per package  
Insert it into the extrusion upside down.  
Material: Low Carbon Steel  
Surface Treatment: Trivalent Chromate

## Metal Stoppers for Pre-Assembly Insertion Square Nuts

RoHS 10

## HNKKST8



100 pcs. per package  
Material: 301 Stainless Steel

Part Number Example: HNTC8 - 8, HNTJ8 - 8, HNTHS8, HNKK8 - 8, HNKKST8

Applicable Extrusions & Brackets: Applicable to extrusions and brackets with the same type number. (Ex.) Part Number

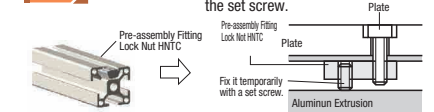
- Pre-Assy. Insertion Nut: HNTT6- —
- Pre-Assembly Insertion Stoppers: HNST6
- Extrusions: HFS6- —
- Brackets: HBLFSN6

Part Number	M	Accessory
HNTC8	8	M4 x 8 Set Screw 1 pc.

Overall length is shorter than Pre-Assy. Insertion Nuts HNTT. Suitable for installing sensors or other components closely in combination. Stopper is not included.



## Application Example



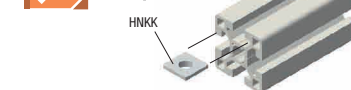
Part Number	M	L
HNTJ8	3	4
PACK-HNTJ8 100/pkg.	8	12

The pre-assy. insertion offset nut, used in combination with a post-assembly. insertion double joint, can be fixed in such a way that the nut, even if connected at the corner of the extrusion, does not protrude from the extrusion (frame).

Part Number
HNTHS8

Part Number	M			
HNKK8	4	5	6	8

## Application Example



Part Number	Applicable Pre-Assembly Insertion Nuts
HNKKST8	HNKK8

## Application Example

