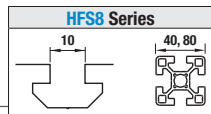


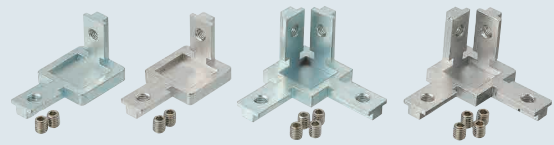
Blind Brackets

Slot Type: HFS8 Series (Aluminum Extrusions 40, 80 Square)



Blind Brackets

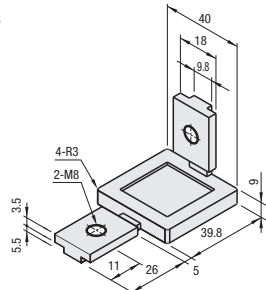
RoHS10



Type	Material	Surface Treatment
HBLBCA8	1045 Carbon Steel or Equivalent	Trivalent Chromate
SHBLBCA8	CF-8 Stainless Steel Cast	—
HBLBCB8	1045 Carbon Steel or Equivalent	Trivalent Chromate
SHBLBCB8	CF-8 Stainless Steel Cast	—

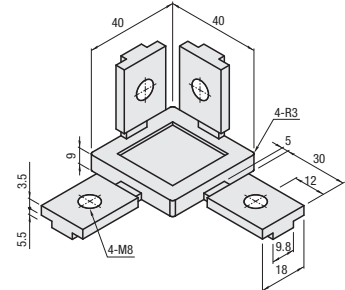
Corner Blind Brackets (Two-Way Type)
HBLBCA8
SHBLBCA8
(Stainless Steel)

⊘ Not applicable to Aluminum Extrusions 80 square.



Corner Blind Brackets (Three-Way Type)
HBLBCB8
SHBLBCB8
(Stainless Steel)

⊘ Not applicable to Aluminum Extrusions 80 square.



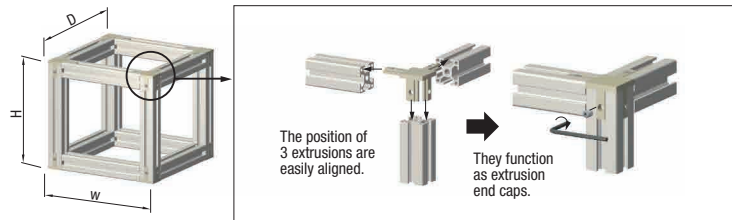
Part Number	Mass (g)	Changes Included Screw & Nut		Allowable Load (N)
		Screw	Quantity	
HBLBCA8	128	Set Screw M8 x 10	2	700
SHBLBCA8 (Stainless Steel)				
HBLBCB8	180	Set Screw M8 x 10	4	1400
SHBLBCB8 (Stainless Steel)				

Part Number Example **HBLBCA8**

Application Example

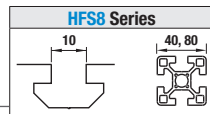
Example: Corner Blind Bracket

Length of extrusion fitted as shown on the right (mm)
 - Extrusion length L used for W
 $L = W - (\text{Extrusion Thickness} \times 2)$
 - Extrusion length L used for D
 $L = D - (\text{Extrusion Thickness} \times 2)$
 - Extrusion length L used for H
 $L = H - 18$
 (Thickness of corner blind brackets x Upper and Lower 2 pcs.)

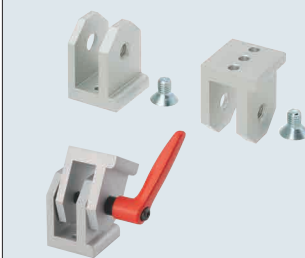


Free Angle Brackets

Slot Type: HFS8 Series (Aluminum Extrusions 40, 80 Square)



Free Angle Brackets



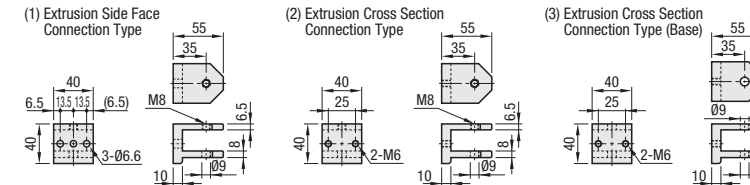
Extrusion Side Face Connection Type
HBLTBA40

(An order of quantity 1 includes 1 pc.)

HBLTBC40 (An order of quantity 1 includes 1 pc. each of (1) and (3).)
HBLTBD40 (An order of quantity 1 includes 1 pc. each of (2) and (3).)

Extrusion Cross Section Connection Type
HBLTBBN40

(An order of quantity 1 includes 1 pc.)



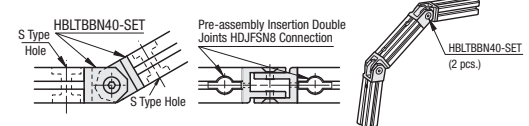
Type	Material	Surface Treatment
HBLTBA40 HBLTBBN40 HBLTBC40 HBLTBD40	A6N01SS-T5 Aluminum Alloy	Anodize
Included Screw	4137 Alloy Steel	Trivalent Chromate

Part Number	Type	No.	Applicable Extrusion	Mass (g)	Accessory	Qty.
HBLTBA40	40	40	40 Square (HFS8)	97	M10 x 16	1
HBLTBBN40				98		
HBLTBC40				267		
HBLTBD40				269		

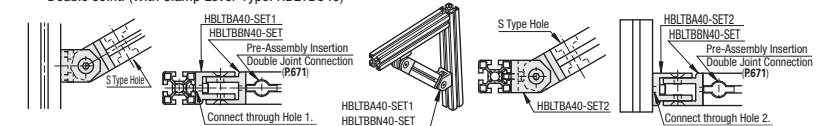
Part Number Example **HBLTBA30**

Application Example

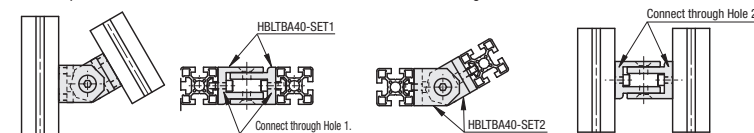
(1) Connection of Two End Sections
 Two pieces of HBLTBBN are used to connect two end sections using Pre-Assembly Insertion Double Joints. (With Clamp Lever Type: HBLTBD45) P.2854
 Two pieces of HBLTBBN are used to connect two end sections using Pre-Assembly Insertion Double Joints. (With Clamp Lever Type: HBLTBD40)



(2) Connection of Two Side Faces
 On the extrusion side face, connect the HBLTBA. On the end face, use 1 HBLTBBN for 1 HBLTBA using Pre-Assembly Insertion Double Joint. (With Clamp Lever Type: HBLTBC40)



(3) Connection of Two Side Faces
 Two pieces of HBLTBA are used to connect them with extrusion side using screws and nuts.



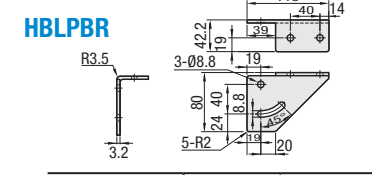
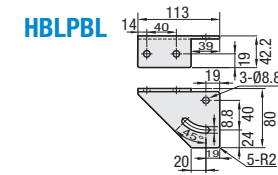
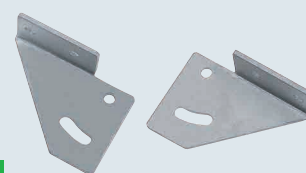
Part Number Alterations **HBLTBA40 HBLTBBN40** - (SET / SET1 / SET2 / SET3 / SET4 / SET5)
HBLTBA40 HBLTBBN40 - SET2 SET

Alterations	Code	How to Use	Accessory				
			Type	No.	Screw Qty.	Nuts / Pre-Assy. Insertion Double Joints	Qty.
Applicable Screws & Nuts Set	SET	Use the hole 1.	HBLTBBN	CBM6-35	2	HDJFSN8	1
	SET1		HBLTBA	CBM6-20	2	HNTT8-6	2
	SET2	Use the hole 2.	HBLTBA	CBM6-20	1	HNTT8-6	1
	SET3		HBLTBC	CBM6-35	2	HDJFSN8	1
	SET4	Use the hole 1.	HBLTBC	CBM6-20	2	HNTT8-6	2
	SET5		HBLTBD	CBM6-35	2	HDJFSN8	1
	SET5	Use the hole 2.	HBLTBC	CBM6-20	1	HNTT8-6	1
	SET5		HBLTBD	CBM6-35	4	HDJFSN8	2

⊘ When connecting with Pre-Assy. Insertion Double Joints, S type hole machining is required on extrusions. (Refer to P.2872) ⊘ Not RoHS compliant when -SET_ is specified.

Free Angle Sheet Metal Brackets

RoHS10



Type	Material	Surface Treatment
HBLPBL8 HBLPBR8	Low Carbon Steel	Trivalent Chromate

Part Number	Type	No.	Applicable Extrusion	Applicable Screw / Nut			
				Hexagon Socket Head Cap Screws with Captured Washers	Qty.	Nuts	Qty.
HBLPBL HBLPBR	8	40 square (HFS8)	40 square (HFS8)	CBST8-15	4	HNTT8-8	4

Application Example



Part Number Example **HBLPBL8**

Part Number Alterations **HBLPBL8** - (SET / SET1)
HBLPBL8 - SET

Alterations	Code	Spec.	Applicable Brackets
Applicable Screws & Nuts (come as a set)	SET	Supplies a set of applicable bolts and nuts for fixing the bracket to an extrusion.	HBLPBL8 HBLPBR8
Set with Applicable Screws, Nuts & Clamp Levers	SET1	Applicable Bolts 3 pcs. Clamp Lever (LNP) 1 Pc. Flat Washer (PWF) 1 Pc. Applicable Nuts 4 Pcs. Set with the above items.	HBLPBL8 HBLPBR8