

Nuts

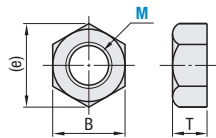
JIS Class 1 / JIS Class 3 (Box Set)

Nuts – JIS Class 1 (Box Set)



Nuts (JIS Class 1)

Type	Material	Surface Treatment
BOX-LBNR	SAE1008 Carbon Steel or Equivalent	Trivalent Chromate
BOX-SLBNR	304 Stainless Steel	—



M x P (Coarse)	B	(e)	T
2 x 0.4	4	4.6	1.6
2.5 x 0.45	5	5.8	2
2.6 x 0.45	5	5.8	2
3 x 0.5	5.5	6.4	2.4
4 x 0.7	7	8.1	3.2
5 x 0.8	8	9.2	4
6 x 1.0	10	11.5	5
8 x 1.25	13	15	6.5
10 x 1.5	17	19.6	8

- Can be ordered as single item. P.2429
- When you order, please specify the box quantity. Minimum order is 1 box.

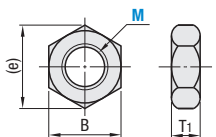
Nuts – JIS Class 3 (Box Set)



RoHS10

Nuts (JIS Class 3)

Type	Material	Surface Treatment
BOX-KNTR	SAE1008 Carbon Steel or Equivalent	Trivalent Chromate
BOX-SKNTR	304 Stainless Steel	—



M x P (Coarse)	B	(e)	T ₁
3 x 0.5	5.5	6.4	1.8
4 x 0.7	7	8.1	2.4
5 x 0.8	8	9.2	3.2
6 x 1.0	10	11.5	3.6
8 x 1.25	13	15	5
10 x 1.5	17	19.6	6

- Can be ordered as single item. P.2429
- When you order, please specify the box quantity. Minimum order is 1 box.

Part Number Example
 Part Number
 BOX-LBNR2.5
 BOX-SKNTR10

Part Number		Pcs./Box
Type	No.	
BOX-LBNR	2	1,000
	2.5	
	2.6	
	3	
	4	
	5	
	6	
	8	
	10	
		200

Part Number		Pcs./Box
Type	No.	
BOX-SLBNR Stainless Steel	2	1,000
	2.5	
	2.6	
	3	
	4	
	5	
	6	
	8	
	10	
		200

Part Number		Pcs./Box
Type	No.	
BOX-KNTR	3	1,000
	4	
	5	
	6	
	8	
	10	
		500
		200

Part Number		Pcs./Box
Type	No.	
BOX-SKNTR Stainless Steel	3	1,000
	4	
	5	
	6	
	8	
	10	
		500
		200

Washers

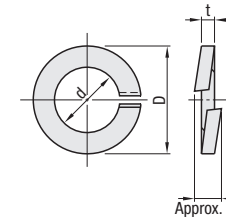
Spring / Flat (Box)

Washers – Spring / Flat (Box)



Spring Washers

Type	Material	Surface Treatment
BOX-SLW	JIS-SWRH	Trivalent Chromate
BOX-SSLW	304 Stainless Steel N	—

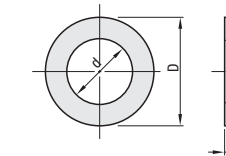


No.	d	D	t
3	3.1	5.9	0.7
4	4.1	7.6	1
5	5.1	9.2	1.3
6	6.1	12.2	1.5
8	8.2	15.4	2
10	10.2	18.4	2.5
12	12.2	21.5	3

- Can be ordered as single item. P.2434

Flat Washers

Type	Material	Surface Treatment
BOX-PWF	Low Carbon Steel or Equivalent	Trivalent Chromate
BOX-SPWF	304 Stainless Steel	—



No.	d	D		t
		BOX-PWF	BOX-SPWF	
3	3.2	6	7	0.5
4	4.3	8	9	0.8
5	5.3	10	10	1
6	6.4	12.5	12.5	1.6
8	8.4	15.5	17	1.6
10	10.5	18	21	2
12	13.0	21	24	2.5

- Can be ordered as single item. P.2434
- When you order, please specify the box quantity. Minimum order is 1 box.

Part Number Example
 Part Number
 BOX-SSLW8
 BOX-PWF3

Part Number		Pcs./Box
Type	No.	
BOX-SLW	3	2,000
	4	
	5	
	6	
	8	
	10	
		1,000
		700

Part Number		Pcs./Box
Type	No.	
BOX-SSLW Stainless Steel	3	2,000
	4	
	5	
	6	
	8	
	10	
		1,000
		700

Part Number		Pcs./Box
Type	No.	
BOX-PWF	3	2,000
	4	
	5	
	6	
	8	
	10	
		1,000
		700

Part Number		Pcs./Box
Type	No.	
BOX-SPWF Stainless Steel	3	2,000
	4	
	5	
	6	
	8	
	10	
		1,000
		700