

# Resin Locating Pins

## Small Diameter / Bolt Fixing

### Feature

Since this type has a metal core, it is less prone to be broken when used for locating with sides. Characteristic of resins P.3068-3069

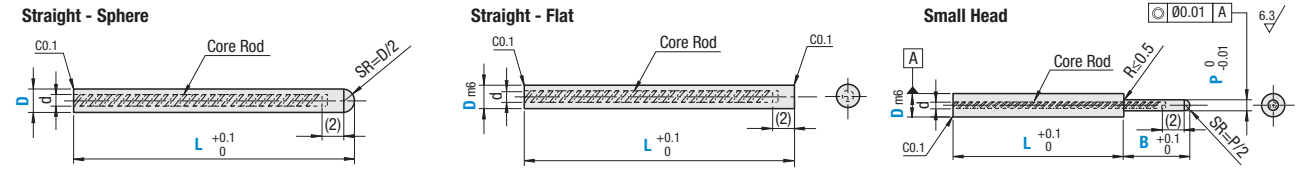
### Resin Locating Pins – Small Diameter



RoHS 10

Insertion Guide Shape, Tolerance	Part Number		Material	d	K
	Material Code				
SNS (Sphere - Tolerance Standard)	BB		Bakelite (Black)	0.4	8.5
SNP (Sphere - Tolerance Selectable)	PM		Polyacetal (White)	0.7	10
SPS (Flat - Tolerance Standard)	EC		Conductive MC Nylon CDR6 (Black)	1.0	16
SNSH (Small Head - Tolerance Standard)	PK		PEEK (Natural Ivory)		

- Some combinations are not available. Refer to the price list to select an available combination.
- Core Rod material is 304 Stainless Steel.
- There is a flat part of Ø0.2 or below at the tip of Straight Type, Spherical Type and Small Head Type.
- MC Nylon of flat is not available.
- The outer diameter tolerance is the result of measurement at room temperature.



### Core Rod Length

**Straight, Sphere:** The smaller of the following:  $L - (D/2 + (2))$  or the value of column K in the table above

**Straight, Flat:** The smaller of the following:  $L - (2)$  or the value of column K in the table above

**Small Head:** The smaller of the following:  $(L+B) - (P/2 + (2))$  or the value of column K in the table above

### Sphere / Flat – Standard Tolerance

Insertion Guide Shape	Part Number		D Dimension m6	L Increment	d
	Material Code	Material Code			
SNS (Sphere)	BB		+0.008	5.0-20.0	0.7
	PM				
SPS (Flat)	EC	(Sphere only)	+0.002	5.0-20.0	1.0
	PK				

### Sphere – Selectable Tolerance

Insertion Guide Shape	Part Number		D Tolerance Selectable	L Increment	d
	Material Code	Material Code			
SNP	BB		M (m6) G (g6) H (h7)	5.0-20.0	0.7
	PM				
	PK				

### Small Head – Standard Tolerance

Insertion Guide Shape	Part Number		D Tolerance m6	L Increment	P Increment	B Increment	d
	Material Code	Material Code					
SNSH	PM		+0.008 +0.002	5.0-18.5	1.0-1.9 (D>P) 1.0-2.9 (D>P)	1.5-10.0 (B-P/2≥1.0)	0.4 0.7
	EC						

When  $D \leq 2$ ,  $L+B \leq 15$  When  $D > 2$ ,  $L+B \leq 20$

**Part Number Example**

Part Number	-	D	-	L	-	P	-	B
SPSBB	-	D1.5	-	L7.5	-		-	
SNSHPM	-	D1.5	-	L10.0	-	P1.0	-	B1.5

**Part Number Example**

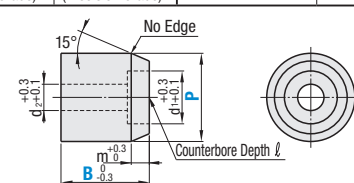
Part Number	-	P	-	B
JPAJ3	-	P8	-	B15

### Resin Locating Pins – Bolt Fixing



RoHS 10

Type	Materials	Operating Ambient Temperature	
JPAJ (Standard Grade)	FPAJ (Precision Grade)	Polyacetal (White)	-45-95°C
JPEAJ (Standard Grade)	FPEAJ (Precision Grade)	PEEK (Natural Ivory)	-50-250°C



Type	No.	P (Standard Grade)		P (Precision Grade)		B 1 mm Inc.	m	d <sub>1</sub>	d <sub>2</sub>	ℓ	Applicable Screw
		1 mm Increment	Tolerance	0.1 mm Increment	Tolerance						
JPAJ	3	8-10	0	8.0-10.0	0	10-25	2	6.5	3.5	4.5	M3
JPEAJ	4	10-12	-0.2	10.0-12.0	-0.05	15-35	3	8.0	4.5	5.5	M4
FPEAJ	5	12-16		12.0-16.0		15-50	4	9.5	5.5	6.5	M5

Characteristics of Polyacetal and PEEK P.3068-3069

# Pusher Pins

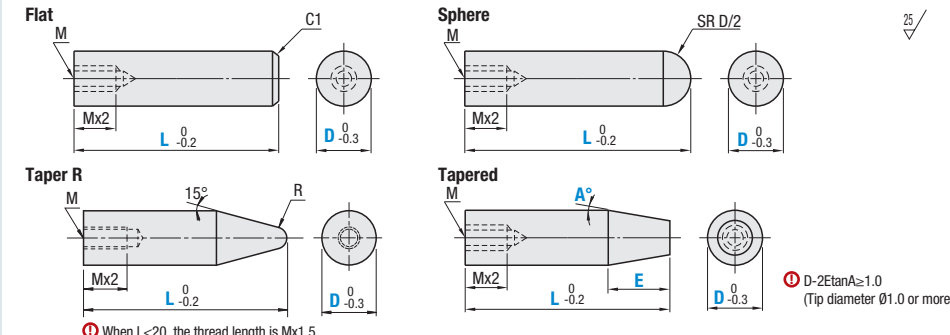
## Straight / Small Head

### Pusher Pins – Straight



RoHS 10

Type				Material	Operating Ambient Temperature
Flat	Spherical	Taper R	Tapered		
PPFJ	PPRJ	PPQJ	PPTJ	Polyacetal (White)	-45-95°C
PEPFJ	PEPRJ	PEPQJ	PEPTJ	PEEK (Natural Ivory)	-50-250°C
PMPFJ	PMPRJ	PMPQJ	—	Conductive MC Nylon CDR2 (Black)	-40-120°C



When  $L < 20$ , the thread length is  $M \times 1.5$ .

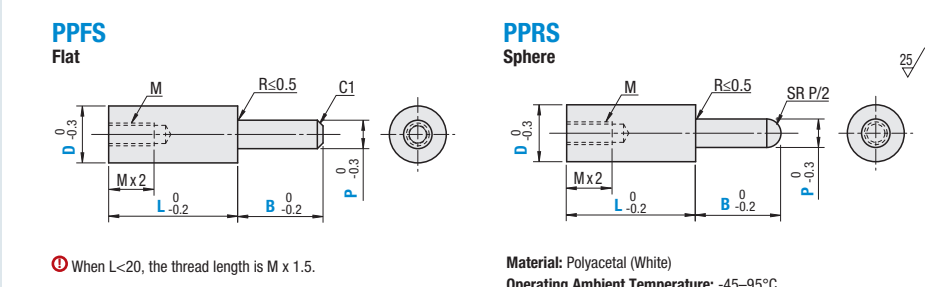
Type	D	L 0.5 mm Increment		M (Coarse)	R
		Flat, Sphere	Taper R		
Flat	6	10.0-100.0	14.0-100.0	3	1
	8	12.0-100.0	18.0-100.0	4	1.5
	10	13.0-100.0	20.0-100.0	5	2
	12	16.0-100.0	26.0-100.0		
	15	19.0-100.0	34.0-100.0		
20	20.0-100.0	40.0-100.0	6	3	
25	20.0-100.0	50.0-100.0			

Type	D	L 0.5 mm Increment	E 0.5 mm Increment	A 1° Increment	M (Coarse)
8	18.0-100.0	4			
10	20.0-100.0	5			
12		5			
15		5			
20	6				
25					

### Pusher Pins – Small Head



RoHS 10

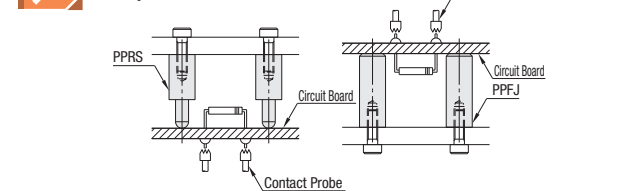


When  $L < 20$ , the thread length is  $M \times 1.5$ .

Material: Polyacetal (White)  
Operating Ambient Temperature: -45-95°C

Type	D	P 0.5 mm Increment	L 0.5 mm Increment	B 0.5 mm Increment	M (Coarse)
PPFS Flat	6	3.0-6.0	10.0-100.0	3.0-20.0	3
	8	4.0-8.0	11.0-100.0		4
	10	5.0-10.0	13.0-100.0		5
	12	6.0-12.0	14.0-100.0		
PPRS Sphere	15	8.0-15.0	14.0-100.0	B ≥ P/2 + 1	6
	20	10.0-20.0			
	25	13.0-25.0			

### Application Example



**Part Number Example**

**Straight**

Part Number	-	L	-	E	-	A
PPFJ10	-	40.0	-		-	
PPTJ12	-	40.0	-	E10	-	A5

**Small Head**

Part Number	-	P	-	L	-	B
PPFS6	-	P3.0	-	L50.5	-	B10.5

**Part Number Alterations**

Part Number	-	L	-	E	-	A	-	(HSC, SC)
PPFJ10	-	40.0	-		-		-	SC15

Code	Thread insert	Width Across Flats			
		HSC	SC		
Spec.	Adds thread insert to M section part. Ordering Code: HSC	Width Across Flats SC: 1 mm Increment SC+ℓ+D/2 ≤ L SC-Mx3 Ordering Code: SC15	D	W	ℓ
			6	5	8
			8	7	8
			10	8	10
			12	10	10
			15	13	10
20	17	10			
25	22	10			