

# Locating Pins (Small Flat Head)

D & P Tolerance Selectable

## Locating Pins – Small Flat Head / D & P Tolerance Selectable



RoHS10

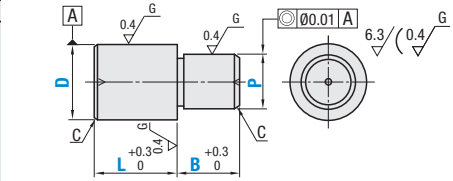
Material No.	Material	Surface Treatment	Hardness	Type	
				Standard	Tapped
(1)	O1 Tool Steel Equivalent	—	60–63 HRC min.	KFFSA	KFFSTA
(2)	O1 Tool Steel Equivalent	Chrome Plating	50–55 HRC min. Plating Hardness 750 HV min.	GKFFSA	GKFFSTA
(3)	O1 Tool Steel Equivalent	—	—	BKFFSA	BKFFSTA
(4)	304 Stainless Steel Equivalent	—	—	SKFFSA	SKFFSTA
(5)	304 Stainless Steel Equivalent	Chrome Plating	Plating Hardness 750 HV min.	HKFFSA	—
(6)	440C or 420 Stainless Steel	—	50–55 HRC min.	CKFFSA	CKFFSTA

## Tolerance Selection

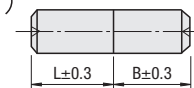
D or P	Standard Grade				Precision Grade		
	M	P	G	H	S	A	B
1.50–3.00	+0.008 m6	+0.012 p6	-0.002 g6	-0.010 h7	0	0	0
3.01–6.00	+0.012 +0.004	+0.020 +0.012	-0.004 -0.012	0 -0.012	0	0	0
6.01–10.00	+0.015 +0.006	+0.024 +0.015	-0.005 -0.014	0 -0.015	0	0	0
10.01–18.00	+0.018 +0.007	+0.029 +0.018	-0.006 -0.017	0 -0.018	0	0	0
18.01–30.00	+0.021 +0.008	+0.035 +0.022	-0.007 -0.020	0 -0.021	0	0	0

⊗ Precision Grade Tolerance is not available for Chrome Plated Product Types.

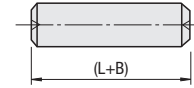
### Standard



Ⓢ When D=P, no relief is applied.  
(i) When D=P and tolerances are different

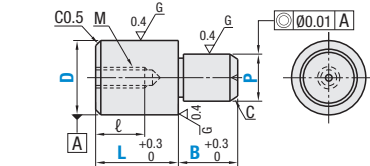


(ii) When D=P and tolerances are the same



(L+B) is the general tolerance.

### Tapped



Ⓢ 440C or 420 Stainless Steel has an identification groove on D part.

## Standard

Type	Part Number			D	P 0.01 mm Increment	L 1 mm Increment	B 0.1 mm Increment	C	
	D Tolerance Selection	P Tolerance Selection							
KFFSA GKFFSA* BKFFSA SKFFSA HKFFSA* CKFFSA	M P G H *A *B	S M P G H *A *B	2	1.50–2.00	2–4	2.0–10.0	0.1		
			3	1.50–3.00	3–6	2.0–10.0			
			4	2.00–4.00	4–8	2.0–10.0			
			0.5			5	2.00–5.00	5–10	2.0–10.0
						6	2.00–6.00	6–12	4.0–12.0
						8	3.00–8.00	8–16	6.0–15.0
						10	3.00–10.00	10–20	6.0–20.0
						12	5.00–12.00	12–24	6.0–20.0
						13	6.00–13.00	13–26	6.0–20.0
			1			16	10.00–16.00	16–32	7.0–20.0
						20	13.00–20.00	20–40	7.0–20.0

⊗ Precision Grade Tolerance is not available for Chrome Plated Product Types.

## Tapped

Type	Part Number			D	P 0.01 mm Increment	L 1 mm Increment	B 0.1 mm Increment	M	ℓ	C
	D Tolerance Selection	P Tolerance Selection								
KFFSTA GKFFSTA BKFFSTA SKFFSTA CKFFSTA	M P G H	S M P G H	6	4.00–6.00	8–12	4.0–12.0	M3	5	0.5	
			6T							
			8	6.00–8.00	11–16	6.0–15.0	M5	8		
			8T							
			10	7.00–10.00	11–20	6.0–20.0	M5	8		
			12							
			13	8.00–13.00	13–26	6.0–20.0	M8	10	2	
			16	10.00–16.00	16–32	7.0–20.0				
			20	13.00–20.00	20–40	7.0–20.0	M8	12	3	

Ⓢ Pins with D value ending in T (ex. 8T) have one size smaller thread diameter and larger wall thickness. (Actual D dimension is the number without "T".)

Ⓢ Note the strength of under-head part. P.1542

Ⓢ Please confirm pilot hole depth on P.1542. Holes may go through.

# Locating Pins (Small Flat Head)

D & P Tolerance Selectable, continued



Part Number Example

Type	D Tolerance	P Tolerance	D	P	L	B
KFFSA	G	S	10	P8.00	L10	B8.0



Part Number Alterations

Part Number	P	L	B	(GDC / RC / AC / CN)
KFFSAGS10	P8.00	L10	B8.0	RC

Alterations Code	Insertion Guide Machining	Radius	Air Vent	C Chamfered Size						
	GDC	RC	AC	CN						
Spec.	<p>Adds Insertion Guide. Ordering Code: GDC</p> <p>Guide Part D -0.03</p> <table border="1"> <tr> <td>D</td> <td>ℓ</td> </tr> <tr> <td>3–6</td> <td>1</td> </tr> <tr> <td>8–20</td> <td>2</td> </tr> </table> <p>⊗ Not applicable to D≤2</p>	D	ℓ	3–6	1	8–20	2	<p>Changes the relief to R0.5. Ordering Code: RC</p> <p>RC (R0.5)</p> <p>Ⓢ Applicable when D-P≥2.</p>	<p>Adds an air vent. Ordering Code: AC</p> <p>D-0.15</p> <p>D=P (Round)</p>	<p>Changes C Chamfering at P dimension part to 0.5 or less. Ordering Code: CN</p> <p>C0.5or less</p> <p>Ⓢ Standard D≥4 Tapped D≥8 ⊗ Not applicable to D dimension part.</p>
D	ℓ									
3–6	1									
8–20	2									