

Timing Belt Conveyors Narrow Type

Single Track, Center Drive, 2- / 3-Groove Frame (Pulley Dia. 19mm / 20mm)

CE
Compliant

Features: A slim width conveyor with 10mm, 20mm narrower belts. Space saving center drive mechanism is suitable for "Conveyor to Conveyor" transfer applications and intra equipment applications.



	Frame	Motor Cover (1)	Motor Cover (2)	Pulley Holder
Material	Aluminum	Steel	Low Carbon Steel	Low Carbon Steel
Surface Treatment	Clear Anodize	Paint	Paint	Paint

Ⓡ Calculation Formula for Belt Teeth:

- CVSTR10: $(2L+205) / 5$
- CVSTR20: $(2L+230) / 5$

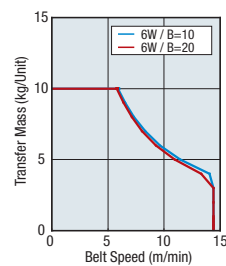
Gearhead Reduction Ratio

*May decrease depending on load condition.

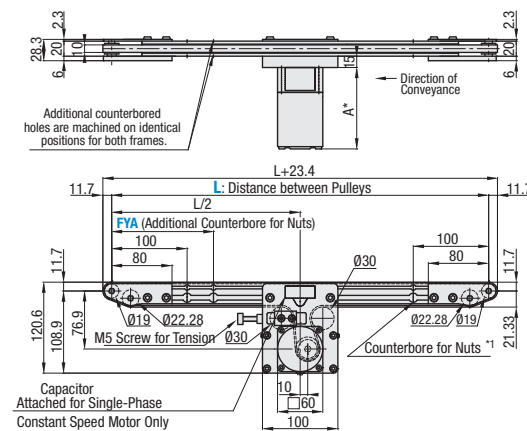
Gearhead Reduction Ratio	Belt Speed (m/min)	
	50Hz	60Hz
12.5	12.0	14.4
15	10.0	12.0
18	8.3	10.0
25	6.0	7.2
30	5.0	6.0
36	4.2	5.0
50	3.0	3.6
60	2.5	3.0
75	2.0	2.4
90	1.7	2.0
100	1.5	1.8
120	1.3	1.5
150	1.0	1.2
180	0.8	1.0

Conveying Capacity

* Reference Value

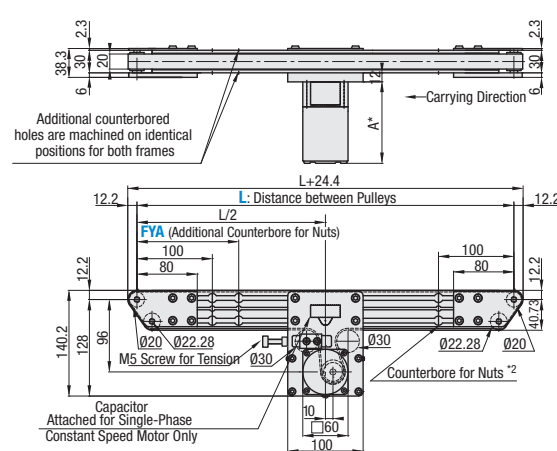


CVSTR-10



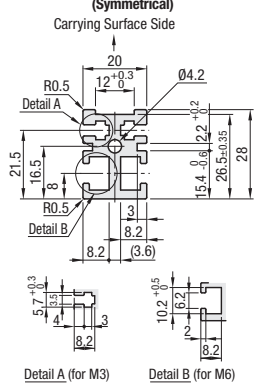
*1 When $L \leq 355$, counterbores for the nuts will not be provided. However, each slot has 4 pre-inserted nuts provided.

CVSTR-20

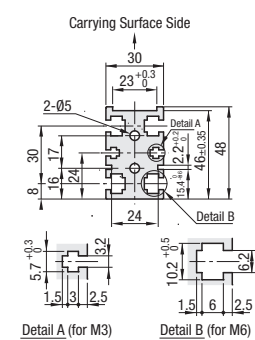


*2 When $L \leq 355$, counterbores for the nuts will not be provided. However, each slot has 4 pre-inserted nuts provided.

Frame Cross Section and Enlarged View (Symmetrical)



Ⓡ Compatible with JIS standard hex nuts.



Ⓡ Compatible with JIS standard hex nuts.

*Timing Belts used are T5 Type

Motor Specifications

Output (W)	Motor Specification	Manufacturer	Reduction Ratio	Motor Length (A)
6W	Constant Speed Motor	Panasonic	12.5-25	101.0
		Panasonic	30-180	108.0
		Oriental	12.5-18	105.0
		Oriental	25-180	115.0
		Taiwanese	12.5-75	119.7
		Taiwanese	90-180	125.7
	Variable Speed Motor	Oriental	12.5-18	115.0
		Oriental	25-180	125.0
		Taiwanese	12.5-75	131.9
		Taiwanese	90-180	137.9

Part Number	Width B (mm)	Length L (mm)	Output (W)	Motor Specification	Gearhead Reduction Ratio	Belt Specification	FYA (Additional Counterbores) 5mm Increment	Motor Manufacturer Selection
CVSTR	10 20	330-2000	6	(Single-Phase)	12.5 15 18 25 30 36 50 60 75 90	H (General Purpose, Translucent) S (For Sliding, Green) J (No Belt)	110 < FYA < L-110 When not specified, there will be no additional counterbores.	A (Panasonic Motor) B (Oriental Motor) C (Taiwanese Motor)
				IM (Constant Speed Motor) SCM (Oriental Motor only Variable Speed Motor)				
				IM (Constant Speed Motor)	100 120 150 180	NH (No Gearhead)	R (No Motor, Gearhead)	
				NV (No Motor)				NM (No Motor)

- Ⓡ Connect the motor so that the belt rotates in the direction of conveyance.
- Ⓡ When "No motor, gearhead" is selected, the motor mounting hole pitch will vary depending on the motor's power rating. Please see Technical Information in our Conveyor Selection web site for the dimension details.
- Ⓡ When "No motor, gearhead" is selected, this unit will be delivered unassembled. The customer is to assemble the unit according to the included assembly instructions. See our Conveyor Selection site for assembly procedures and packaging details.

Part Number Example
CVSTR - 10 - 1000 - 6 - T100 - IM - 25 - H - C - FYA500

Part Number Alterations

- Specify Drive Section Position
- Brackets for Speed Controller Included
- Post-Assembly Insertion Nuts Included
- Motors with Electromagnetic Brake
- Motor with Terminal Box

For details of alterations, see P.1276.

Conveyor Drive Pulley



Part Number	Material		Surface Treatment	
	(1) Sprocket	(2) Pulley	(1) Sprocket	(2) Pulley
CHTDW	1045 Carbon Steel Equivalent	Aluminum	Black Oxide	Clear Anodize
CHTDWM				

Ⓡ Calculation Formula for Belt Teeth:

- CVSTR10: $(2L+205) / 5$
- CVSTR20: $(2L+230) / 5$

Gearhead Reduction Ratio

*May decrease depending on load condition.

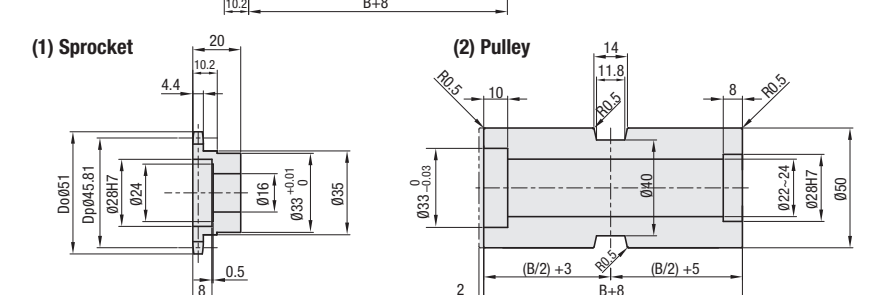
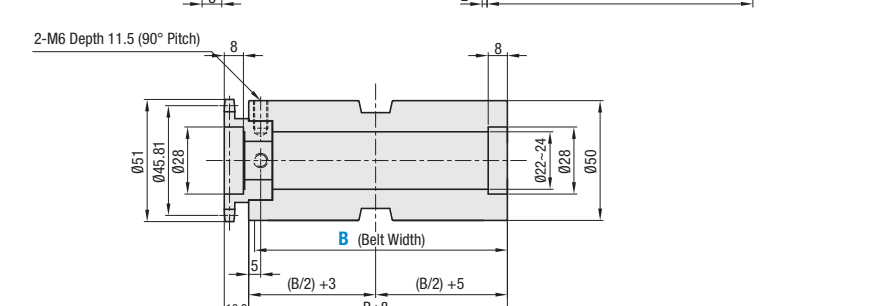
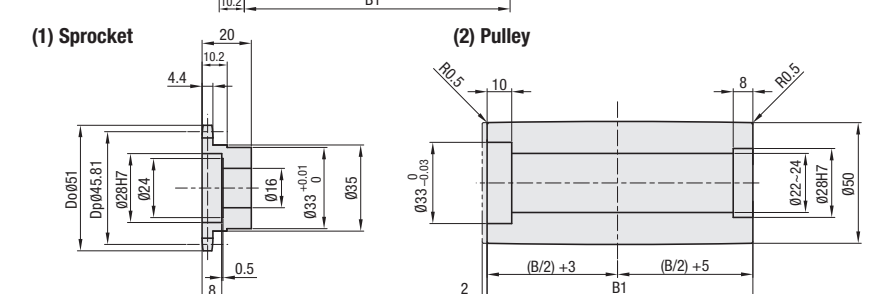
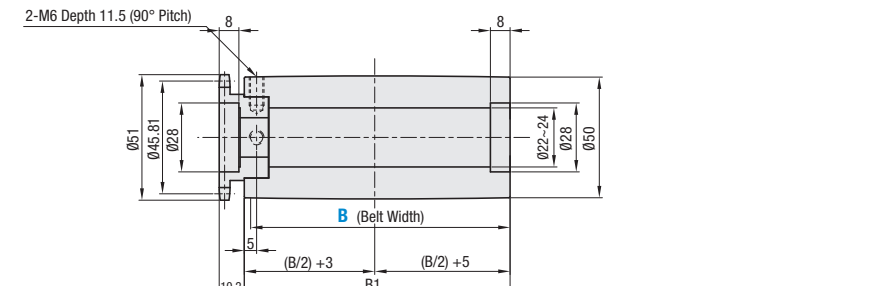
Gearhead Reduction Ratio	Belt Speed (m/min)	
	50Hz	60Hz
12.5	12.0	14.4
15	10.0	12.0
18	8.3	10.0
25	6.0	7.2
30	5.0	6.0
36	4.2	5.0
50	3.0	3.6
60	2.5	3.0
75	2.0	2.4
90	1.7	2.0
100	1.5	1.8
120	1.3	1.5
150	1.0	1.2
180	0.8	1.0

Conveying Capacity

* Reference Value



Part Number	Material		Surface Treatment	
	(1) Sprocket	(2) Pulley	(1) Sprocket	(2) Pulley
CHTDW	1045 Carbon Steel Equivalent	Aluminum	Black Oxide	Clear Anodize
CHTDWM				



Ⓡ Sprocket and pulley are assembled by press-fit

Part Number	B (Belt Width) 10 mm Increment	Applicable Conveyors
CHTDW	50-450	SVKN
CHTDWM		SVKR

Ⓡ B1 dimension is conveyor belt width +8.

Part Number Example
CHTDW - 100

