

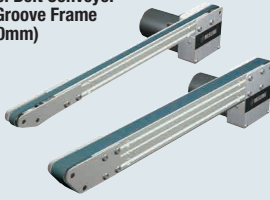
Timing Belt Conveyors Narrow Type

Single Track, Head Drive, 2- / 3-Groove Frame (Pulley Dia. 19mm / 20mm)

CE
Compliant

Features: A slim width conveyor with 10mm, 20mm narrower belts. Space saving center drive mechanism is suitable for intra equipment applications and small parts transfers.

Stainless Steel Belt Conveyor – End Drive, 3-Groove Frame (Pulley Dia. 50mm)



RoHS10

	Frame	Motor Cover (1)	Motor Cover (2)	Pulley Holder
Material	Aluminum	Steel	Low Carbon Steel	Low Carbon Steel
Surface Treatment	Clear Anodize	Paint	Paint	Paint

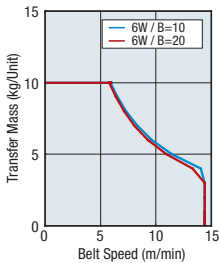
Gearhead Reduction Ratio

*May decrease depending on load condition.

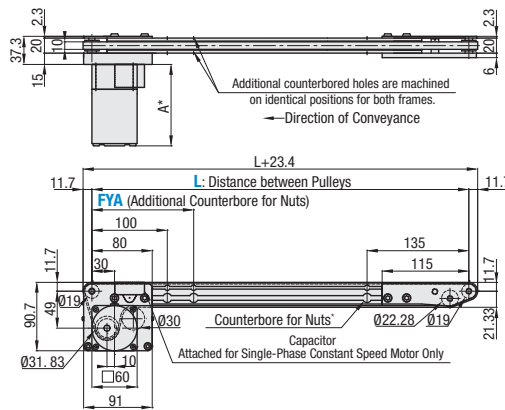
Gearhead Reduction Ratio	Belt Speed (m/min)	
12.5	12.0	14.4
15	10.0	12.0
18	8.3	10.0
25	6.0	7.2
30	5.0	6.0
36	4.2	5.0
50	3.0	3.6
60	2.5	3.0
75	2.0	2.4
90	1.7	2.0
100	1.5	1.8
120	1.3	1.5
150	1.0	1.2
180	0.8	1.0

Conveying Capacity

* Reference Value

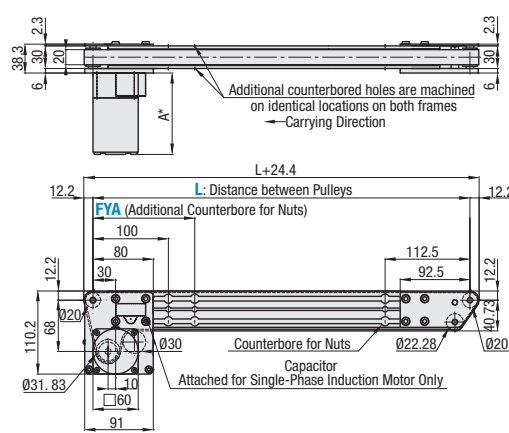


CVSTC-10

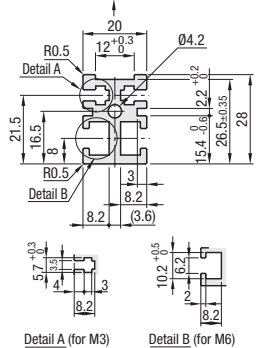


*When L≤260, there will be no counterbored hole for nuts. However, each slot has 4 pre-inserted nuts provided.

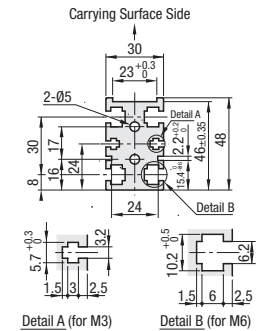
CVSTC-20



Frame Cross Section and Enlarged View (Symmetrical)
Carrying Surface Side



① Compatible with JIS standard hex nuts.



① Compatible with JIS standard hex nuts.

*Timing Belts used are T5 Type

Motor Specifications

Output (W)	Motor Specification	Manufacturer	Reduction Ratio	Motor Length (A)
6W	Constant Speed Motor	Panasonic	12.5-25	101.0
			30-180	108.0
		Oriental	12.5-18	105.0
			25-180	115.0
	Variable Speed Motor	Taiwanese	12.5-75	119.7
			90-180	125.7
		Oriental	12.5-18	115.0
			25-180	125.0
		Taiwanese	12.5-75	131.9
			90-180	137.9

Part Number	Width B (mm)	Length L 5mm Increment	Output (W)	Voltage (V)	Motor Specification	Gearhead Reduction Ratio	Belt Specification	FYA (Additional Counterbores) 5mm Increment	Motor Manufacturer Selection
CVSTC	10 20	245-2000	6	(Single-Phase) TA100 TA110 TA115 TA200 TA220 TA230	IM (Constant Speed Motor) SCM *Oriental Motor only (Variable Speed Motor)	12.5 15 18 25 30 36 50 60 75 90 100 120 150 180	H (General Purpose, Translucent) S (For Sliding, Green) J (No Belt)	110<FYA<L-145 * When not specified, there will be no additional counterbores.	A (Panasonic Motor) B (Oriental Motor) C (Taiwanese Motor)
					IM (Constant Speed Motor)				
					NV (No Motor)	NM (No Motor)	NH (No Gearhead)		R (No Motor, Gearhead)

① Connect the motor so that the belt rotates in the direction of conveyance.

② When "No motor, gearhead" is selected, the motor mounting hole pitch will vary depending on the motor's power rating. Please see Technical Information in our Conveyor Selection web site for the dimension details.

③ When "No motor, gearhead" is selected, this unit will be delivered unassembled. The customer is to assemble the unit according to the included assembly instructions. See our Conveyor Selection site for assembly procedures and packaging details.



Part Number Example

Part Number	B	L	Output	Voltage	Motor Specification	Gearhead Reduction Ratio	Belt Specification	Motor Manufacturer Selection	FYA
CVSTC	10	1000	6	T100	IM	25	H	C	FYA500



Part Number Alterations

Motor Position Reversed
Brackets for Speed Controller Included
Post-Assembly Insertion Nuts Included
Motor with Terminal Box

For details of alterations, see P.1276.