

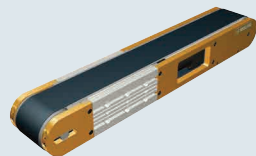
Flat Belt Conveyor Motor Integrated Type

3-Groove Frame (Pulley Dia. 70mm)

CE Compliant

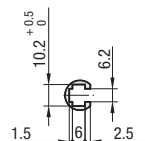
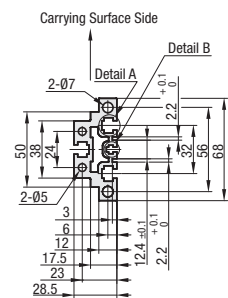
Features: Crowned pulleys suppress meandering. The unit height has been reduced by half with the motor integrated in the frame.

Flat Belt Conveyor Motor Integrated Type – 3-Groove Frame (Pulley Dia. 70mm)

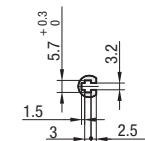


	Frame	Pulley Holder
Material	Aluminum	5052 Aluminum Alloy
Surface Treatment	Clear Anodize	Gold Anodize

Frame Cross Section - Enlarged (Vertically Symmetrical)



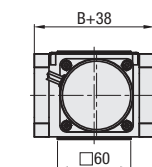
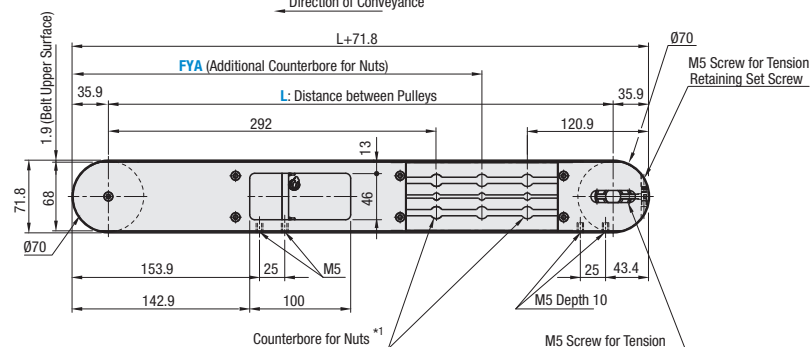
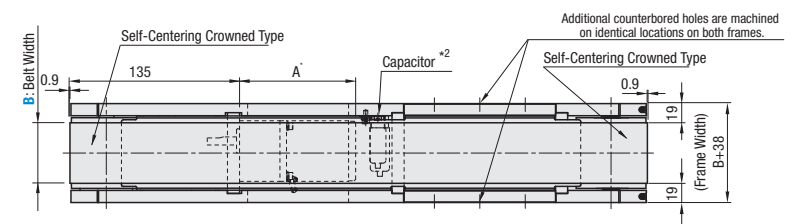
Detail A (for M6)



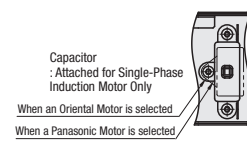
Detail B (for M3)

Compatible with JIS standard hex nuts.

CVSMA 6W Motor Type



Motor Mounting Details



Capacitor Mounting Details

*1 When L≤815, counterbores for the nuts will not be provided. However, each slot has 4 pre-inserted nuts provided.

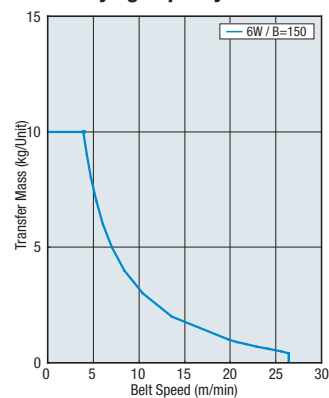
*2 Single-phase Constant Speed Motor only.

The dimensions in the diagram are for Belt Specifications H (0.9mm thick.). Take note that belt thickness varies by Belt Specifications.

Motor Specifications

Specification	Motor Manufacturer	Reduction Ratio	Motor Length (A)
Constant Speed Motor	Panasonic	15-25	101.0
		30-180	108.0
	Oriental	15-18	105.0
		25-180	115.0
Variable Speed Motor	Oriental	15-18	115.0
		25-180	125.0

Conveying Capacity



*Reference Value may different by selected Belt.

Gearhead Reduction Ratio

*May decrease depending on load condition.

Gearhead Reduction Ratio	Belt Speed (m/min)	
	50Hz	60Hz
15	22.0	26.4
18	18.3	22.0
25	13.2	15.8
30	11.0	13.2
36	9.2	11.0
50	6.6	7.9
60	5.5	6.6
75	4.4	5.3
90	3.7	4.4
100	3.3	4.0
120	2.7	3.3
150	2.2	2.6
180	1.8	2.2

Flat Belt Conveyor Motor Integrated Type

3-Groove Frame (Pulley Dia. 70mm), continued

Conveyor Resource Site:
<http://www.misumiusa.com/conveyor/>
 Conveyor Selection, Design Your Own Conveyor Kit, & Maintenance Parts Search

Part Number	Width B (mm)	Length L 5mm Increment	Motor				Belt Specification	FYA (Additional Counterbores) 5mm Increment	Motor Manufacturer Selection
			Output (W)	Voltage (V)	Specification	Gearhead Reduction Ratio			
CVSMA	60 100 150	415-2000	6	(Single-Phase) TA100 TA110 TA115 TA200 TA220 TA230	IM (Constant Speed Motor) SCM (Variable Speed Motor)	15 18 25 30 36 50 60 75 90 100	H (General Purpose, Green) W (General Purpose, White) G (For Sliding, Green) S (For Sliding, White) D (Static Conductive) F (Food Grade) O (Oil Resistant) N (Non-Slick Food Grade) J (No Belt)	390-FYA<L-100 * When not specified, there will be no additional counterbores.	A (Panasonic Motor) B (Oriental Motor)
				NV (No Motor)	NM (No Motor)	NH (No Gearhead)	* For belts other than the above, select from Belt Specification below.		R (No Motor, Gearhead)

- Connect the motor so that the belt rotates in the direction of conveyance.
- When "No motor, gearhead" is selected, the motor mounting hole pitch will vary depending on the motor's power rating. Please see Technical Information in our Conveyor Selection web site for the dimension details.
- When "No motor, gearhead" is selected, this unit will be delivered unassembled. The customer is to assemble the unit according to the included assembly instructions. See our Conveyor Selection site for assembly procedures and packaging details.

Belt Specification	Standard Belt	Optional Belt 1	Optional Belt 2	No Belt
General Purpose	H (Green), W (White), HG (Green)	—	—	J (No Belt)
For Sliding	G (Green), S (White)	—	—	
For Inclined Transfer	—	—	—	
Grip Type	—	GG (Green), GW (White)	—	
Oil Resistant	O (Navy Blue), OH (Green)	OW (White)	—	
Non-Slick Food Grade	N (White), NS (White)	NB (Sky Blue), NBG (Lime Green) HH (Green), HW (White)	—	
Food Grade	F (White)	KW (White), KSB (Sky Blue)	—	
Static Conductive	D (Black), DS (Black)	—	—	

Part Number	B	Available Types																	
		L415-450	L455-500	L505-600	L605-700	L705-800	L805-900	L905-1000	L1005-1100	L1105-1200	L1205-1300	L1305-1400	L1405-1500	L1505-1600	L1605-1700	L1705-1800	L1805-1900	L1905-2000	
CVSMA	60	•	•	•	•	•	•	•	•	•	•	•	•	•	•	•	•	•	•
	100	•	•	•	•	•	•	•	•	•	•	•	•	•	•	•	•	•	•
	150	—	•	•	•	•	•	•	•	•	•	•	•	•	•	•	•	•	•

