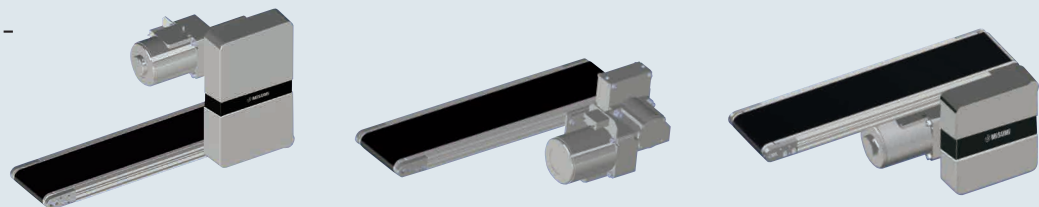


Flat Belt Conveyors – Motor Mounting Position Selectable

End Drive, 2-Groove Frame (Pulley Dia. 30mm)

Features: The motor mounting position is selectable for either top mounting, bottom mounting, or side mounting. Adoption of orthogonal shaft gear head solves the mounting space issue.

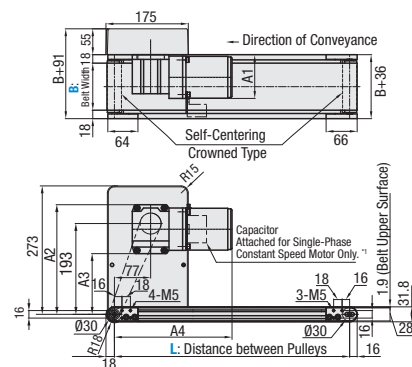
Flat Belt Conveyors – Motor Mounting Position Selectable – End Drive, 2-Groove Frame (Pulley Dia. 30mm)



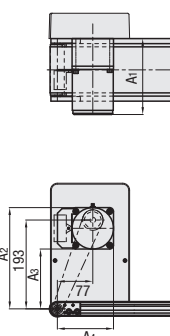
CVMA

Top Mount Type (TM)

Motor mounting position specifications for **TM1, TM2, and TM3**

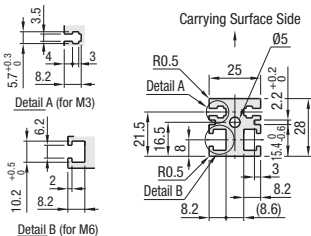


Motor mounting position specifications for **TM5**



	Frame	Motor Cover	Pulley Holder
Material	Aluminum	Aluminum	Aluminum
Surface Treatment	Clear Anodize	Paint	Paint

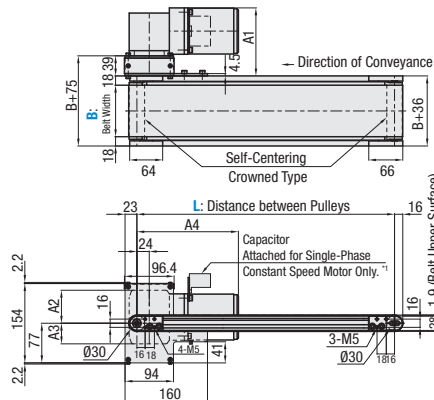
Frame Cross Section and Enlarged View (Symmetrical)



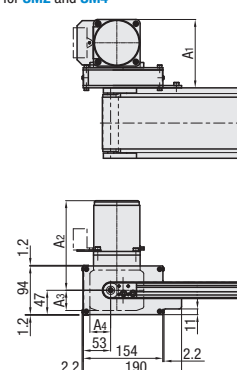
- Compatible with JIS standard hex nuts.
- *Each slot has 4 pre-inserted nuts provided.
- When counterbores for inserting nuts are required, please specify in alterations.
- *Capacitor is included with single-phase Constant Speed Motors only. Capacitor mounting position can be arranged by the customer.
- The dimensions in the diagram are for Belt Specifications H (0.9mm thick.). Take note that belt thickness varies by Belt Specifications.

Side Mount Type (SM)

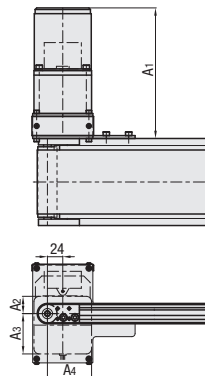
Motor mounting position specifications for **SM1 and SM3**



Motor mounting position specifications for **SM2 and SM4**

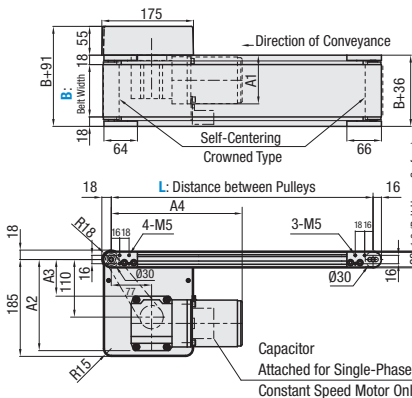


Motor mounting position specifications for **SM5**

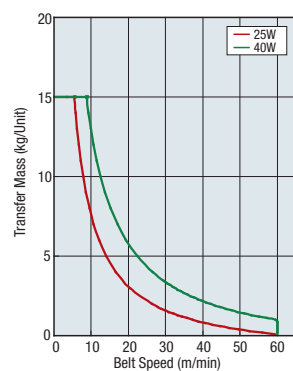


Bottom Mount Type (BM)

Motor mounting position specifications for **BM1, BM3, and BM4**



Conveying Capacity (TM, SM, BM)



*Reference Value may differ by selected Belt.

Gearhead Reduction Ratio

*May decrease depending on load condition.

Gearhead Reduction Ratio	Belt Speed (m/min)		Belt Speed (m/min)	
	TM - BM	60Hz	50Hz	SM
5	56.4	67.7	28.2	33.8
7.5	37.6	45.1	18.8	22.6
9	31.3	37.6	15.7	18.8
12.5	22.6	27.1	11.3	13.5
15	18.8	22.6	9.4	11
18	15.7	18.8	7.8	9.4
25	11.3	13.5	5.6	6.8
30	9.4	11.3	4.7	5.6
36	7.8	9.4	3.9	4.7
50	5.6	6.8	2.8	3.4
60	4.7	5.6	2.4	2.8
75	3.8	4.5	1.9	2.3
90	3.1	3.8	1.6	1.9
100	2.8	3.4	1.4	1.7
120	2.4	2.8	1.2	1.4
150	1.9	2.3	0.9	1.1
180	1.6	1.9	0.8	0.9

Flat Belt Conveyors – Motor Mounting Position Selectable

End Drive, 2-Groove Frame (Pulley Dia. 30mm), *continued*

Conveyor Resource Site: <http://www.misumiusa.com/conveyor/>
Conveyor Selection, Design Your Own Conveyor Kit, & Maintenance Parts Search

Part Number Type	Motor Mounting Position	B 10mm Increment	L 5mm Increment	Output (W)	Motor		Gearhead Reduction Ratio	Belt Specification	Motor Manufacturer Selection
					Voltage (V)	Specification			
CVMA	TM1 SM1 BM1 TM2 SM2 TM3 SM3 BM3 TM4 SM4 BM4 TM5 SM5	50-300	200-2000	25 40	(Single-Phase)	IM (Constant Speed Motor) SCM (Variable Speed Motor)	5 7.5 9 12.5 15 18 25 30 36 50 60 75 90 100 120 150 180	H (General Specifications, Green) W (General Specifications, White) G (For Sliding, Green) S (For Sliding, White) D (Static Conductive) F (Food Grade, White) O (Oil Resistant, Navy Blue) N (Non-Stick Food Grade, White) J (No Belt)	A (Panasonic Motor) B (Oriental Motor) * SCM (Variable Speed Motor) is not selectable for A. ⊗ When output is 25, Panasonic Motor is not applicable.
					(Three-Phase)	IM (Constant Speed Motor)			

- Connect the motor so that the belt rotates in the direction of conveyance.
- When "No motor, gearhead" is selected, the motor mounting hole pitch will vary depending on the motor's power rating. Please see Technical Information in our Conveyor Selection web site for the dimension details.
- When "No motor, gearhead" is selected, this unit will be delivered unassembled. The customer is to assemble the unit according to the included assembly instructions. See our Conveyor Selection site for assembly procedures and packaging details.
- A worm gear is used for orthogonal shaft gear head. Note, therefore, the motor cannot be rotated from the belt side for maintenance work, etc.

Motor Mounting Position Selection Table

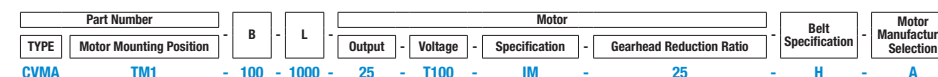
Gearhead	Motor Mounting Position		
	Top Mount	Side Mount	Bottom Mount
Orthogonal Shaft			
Parallel Shaft			

Belt Selection Table

Belt Specification	Standard Belt	Optional Belt 1	Optional Belt 2	No Belt
General Purpose	H (Green), W (White), HG (Green)	—	HY (Yellow Green), HBN (Sky Blue)	J (No Belt)
For Sliding	G (Green), S (White)	—	—	
For Inclined Transfer	LG (Green), LW (White)	—	—	
Grip Type	—	GG (Green), GW (White)	GSN (Green)	
Oil Resistant	O (Navy Blue), OH (Green), OG (Green)	OW (White)	ON (White)	
Non-Stick Food Grade	N (White), NS (White)	NB (Sky Blue), NGB (Lime Green), HH (Green), HW (White)	NWN (White), NSN (Sky Blue), NGN (Lime Green), HBG (Green), HBW (White), BW (White)	
Food Grade	F (White)	KW (White), KSB (Sky Blue), PHB (Sky Blue)	PHN (Sky Blue), PWN (Sky Blue), KWN (White)	
Static Conductive	D (Black), DS (Black)	—	DG (Black)	

Part Number	B	Available Types																	
		L200-300	L305-400	L405-500	L505-600	L605-700	L705-800	L805-900	L905-1000	L1005-1100	L1105-1200	L1205-1300	L1305-1400	L1405-1500	L1505-1600	L1605-1700	L1705-1800	L1805-1900	L1905-2000
CVMATM#	50-100	•	•	•	•	•	•	•	•	•	•	•	•	•	•	•	•	•	•
	110-150	•	•	•	•	•	•	•	•	•	•	•	•	•	•	•	•	•	•
	160-200	•	•	•	•	•	•	•	•	•	•	•	•	•	•	•	•	•	•
	210-250	•	•	•	•	•	•	•	•	•	•	•	•	•	•	•	•	•	•
CVMASM#	50-100	•	•	•	•	•	•	•	•	•	•	•	•	•	•	•	•	•	•
	110-150	•	•	•	•	•	•	•	•	•	•	•	•	•	•	•	•	•	•
	160-200	•	•	•	•	•	•	•	•	•	•	•	•	•	•	•	•	•	•
	210-250	•	•	•	•	•	•	•	•	•	•	•	•	•	•	•	•	•	•

Part Number Example



Part Number Alterations

- Motor Position Reversed
- Additional Counterbores
- Motor Cover with Window
- Brackets for Speed Controller Included
- Post-Assembly Insertion Nuts Included
- Motor with Terminal Box
- Stands (Legs)

For details of alterations, see P.1276.