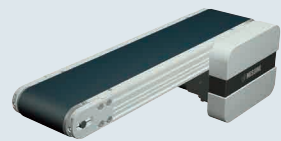


Flat Belt Conveyors

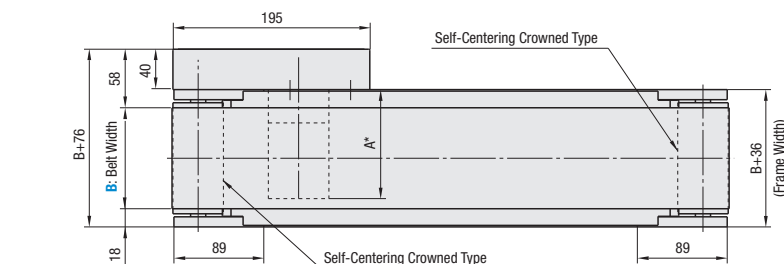
End Drive, 3-Groove Frame (Pulley Dia. 50mm)

Features: Flat belt with the width specifiable in the increments of 1mm, the smallest in the industry. Superior to CVSB in maintainability and space saving.

Flat Belt Conveyors – End Drive, 3-Groove Frame

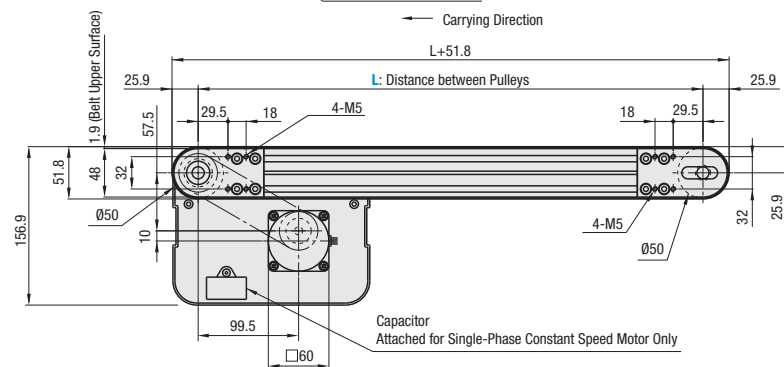
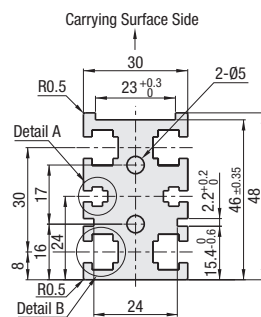


CVGC 6W Motor Type

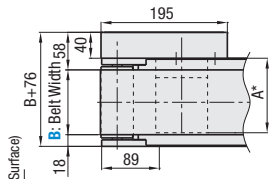


	Frame	Motor Cover	Pulley Holder
Material	Aluminum	Aluminum	Aluminum
Surface Treatment	Clear Anodize	Paint	Paint

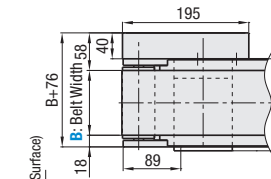
Frame Cross Section and Enlarged View (Symmetrical)



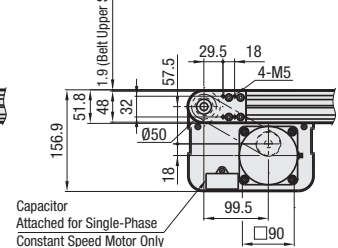
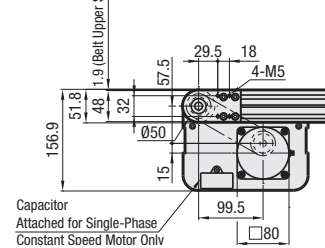
25W Motor Type



40W Motor Type



* When L₂≥340, each slot has four (4) nuts inserted. When counterbores for inserting nuts are required, please specify in alterations.
 ⚠ The dimensions in the diagram are for Belt Specifications H (0.9mm thick). Take note that belt thickness varies by Belt Specifications.



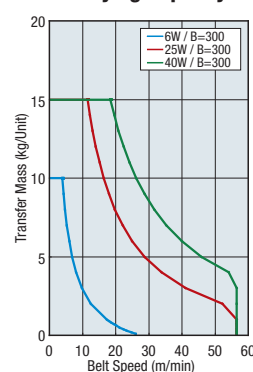
⚠ Compatible with JIS standard hex nuts.

Motor Specifications

Output (W)	Specification	Motor Manufacturer	Reduction Ratio	Motor Length (A)
6W	Constant Speed Motor	Panasonic	12.5-25	101.0
		Panasonic	30-180	108.0
		Oriental	12.5-25	105.0
	Variable Speed Motor	Oriental	25-180	115.0
		Taiwanese	12.5-75	114.7
		Taiwanese	90-180	120.7
25W	Constant Speed Motor	Oriental	12.5-18	115.0
		Taiwanese	25-180	125.0
		Taiwanese	12.5-75	126.9
	Variable Speed Motor	Panasonic	90-180	132.9
		Oriental	5-18	117.0
		Taiwanese	25-180	127.5
Variable Speed Motor	Taiwanese	5-75	129.0	
	Oriental	90-180	136.0	
	Taiwanese	5-18	127.0	
Variable Speed Motor	Oriental	25-180	137.5	
	Taiwanese	5-75	139.5	
	Taiwanese	90-180	146.5	

Output (W)	Specification	Motor Manufacturer	Reduction Ratio	Motor Length (A)
40W	Constant Speed Motor	Panasonic	5-180	142.0
		Oriental	5-18	147.0
		Oriental	25-180	165.0
	Variable Speed Motor	Taiwanese	5-75	164.6
		Taiwanese	90-180	173.6
		Oriental	5-18	157.0
Variable Speed Motor	Oriental	25-180	175.0	
	Taiwanese	5-75	175.1	
	Taiwanese	90-180	184.1	

Conveying Capacity



*Reference Value may differ by selected Belt.

Gearhead Reduction Ratio

*May decrease depending on load condition.

Gearhead Reduction Ratio	Belt Speed (m/min)	
	50Hz	60Hz
5	47.1	56.5
7.5	31.4	37.7
9	26.2	31.4
12.5	18.8	22.6
15	15.7	18.8
18	13.1	15.7
25	9.4	11.3
30	7.9	9.4
36	6.5	7.9
50	4.7	5.7
60	3.9	4.7
75	3.1	3.8
90	2.6	3.1
100	2.4	2.8
120	2.0	2.4
150	1.6	1.9
180	1.3	1.6

Flat Belt Conveyors

End Drive, 3-Groove Frame (Pulley Dia. 50mm), continued

Conveyor Resource Site:
<http://www.misumiusa.com/conveyor/>
 Conveyor selection, Design your own kit,
 & Maintenance parts search.

Part Number	Width B 1mm Increment	Length L 5mm Increment	Motor				Belt Specification	Motor Manufacturer Selection ⚠ The prices vary by manufacturer.				
			Output (W)	Voltage (V)	Specification	Gearhead Reduction Ratio						
CVGC	40-300	240-2000	6 25 40	(Single-Phase)	IM (Constant Speed Motor) SCM (Variable Speed Motor)	5 7.5 9 12.5 15 18 25 30 36 50 60 75 90 100 120 150 180	H (General Purpose, Green) W (General Purpose, White) G (For Sliding, Green) S (For Sliding, White) D (Static Conductive) F (Food Grade) O (Oil Resistant) N (Non-Stick Food Grade) J (No Belt)	A (Panasonic Motor) B (Oriental Motor) C (Taiwanese Motor) * SCM (Variable Speed Motor) is not selectable for A. R (No Motor, Gearhead)				
									25 40	(Three-Phase)	IM (Constant Speed Motor)	⊗ 5-9 not applicable for 6W Motor

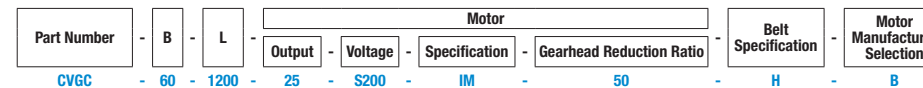
- ⚠ Connect the motor so that the belt rotates in the direction of conveyance.
- ⚠ When "No motor, gearhead" is selected, the motor mounting hole pitch will vary depending on the motor's power rating. Please see Technical Information in our Conveyor Selection web site for the dimension details.
- ⚠ When "No motor, gearhead" is selected, this unit will be delivered unassembled. The customer is to assemble the unit according to the included assembly instructions. See our Conveyor Selection site for assembly procedures and packaging details.

Belt Specification	Standard Belt	Optional Belt 1	Optional Belt 2	No Belt
General Purpose	H (Green), W (White), HG (Green)	—	HY (Yellow Green), HBN (Sky Blue), HGN (Green)	J (No Belt)
For Sliding	G (Green), S (White)	—	—	
For Inclined Transfer	LG (Green), LW (White)	—	—	
Grip Type	—	GG (Green), GW (White)	GSN (Green)	
Oil Resistant	O (Navy Blue), OH (Green), OG (Green)	OW (White)	ON (White)	
Non-Stick Food Grade	N (White), NS (White)	NB (Sky Blue), NBG (Lime Green), HH (Green), HW (White)	NWN (White), NSN (Sky Blue), NGN (Lime Green), HBG (Green), HBW (White), BW (White)	
Food Grade	F (White)	KW (White), KSB (Sky Blue), PHB (Sky Blue)	PHN (Sky Blue), PWN (Sky Blue), KWN (White), KDN (White)	
Static Conductive	D (Black), DS (Black)	—	DG (Black)	

⚠ If using Optional Belts, please select motor manufacturer A or B (Motor C is applicable for Standard Belt only).

Part Number	B	Available Types																		
		L240-300	L305-400	L405-500	L505-600	L605-700	L705-800	L805-900	L905-1000	L1005-1100	L1105-1200	L1205-1300	L1305-1400	L1405-1500	L1505-1600	L1605-1700	L1705-1800	L1805-1900	L1905-2000	
CVGC	40-50	•	•	•	•	•	•	•	•	•	•	•	•	•	•	•	•	•	•	•
	60-100	—	•	•	•	•	•	•	•	•	•	•	•	•	•	•	•	•	•	•
	110-150	—	—	•	•	•	•	•	•	•	•	•	•	•	•	•	•	•	•	•
	160-200	—	—	—	•	•	•	•	•	•	•	•	•	•	•	•	•	•	•	•
	210-250	—	—	—	—	•	•	•	•	•	•	•	•	•	•	•	•	•	•	•
	260-300	—	—	—	—	—	•	•	•	•	•	•	•	•	•	•	•	•	•	•

Part Number Example



Part Number Alterations

- Motor Position Reversed
- Additional Counterbores
- Motor Cover with Window
- Brackets for Speed Controller Included
- Post-Assembly Insertion Nuts Included
- Motor with Terminal Box
- Stands (Legs)

For details of alterations, see P.1276.