

Couplings

Jaw Set Screw

Features: By changing the types of spacer, allowable torque depending on application and misalignment can be altered.



RoHS 10

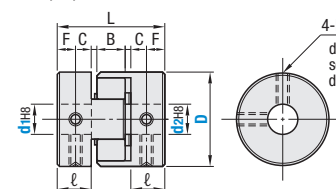
(D=14 • 20 • 30 • 40)

Selectable	Color	Hardness JIS A
BL	Blue	80
WH	White	92
RD	Red	98

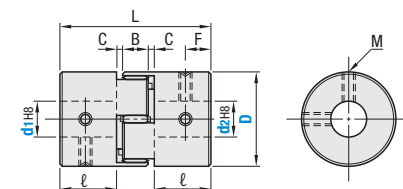
(D=48 • 55 • 65 • 80 • 104)

Selectable	Color	Hardness JIS A
GR	Green	55D (98A)
RD	Red	64D

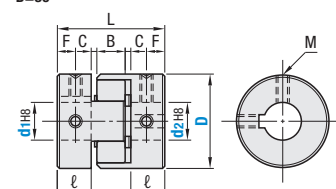
CPJ (Standard Bore)
D=14, 20, 30



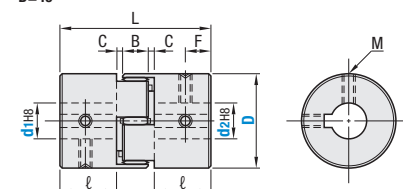
CPJ (Standard Bore)
D=40



CPJK (Keyway Bore d1, d2)
D=30



CPJK (Keyway Bore d1, d2)
D=40



- Ⓢ Operating Temperature -20–60°C
- Ⓢ The lateral, angular, and axial misalignment values shown are for each occurring individually. When more than one misalignments are occurring simultaneously, the allowable maximum value of each will be reduced by 1/2.
- Ⓢ For the selection criteria and alignment procedures, see P.1091, 1093.

Parts	Material	Surface Treatment
Hub	Aluminum Alloy	Clear Anodize
Spacers	Polyurethane	
Set Screw	4137 Alloy Steel	Black Oxide Coating

Part Number	Type	D	Spacers (Color)	d1, d2 (d1=d2)	L	L	B	C	F	Set Screw	
										M	Tightening Torque (N-m)
CPJ	14		BL (Blue) WH (White) RD (Red)	3 4 5 6	22	7	6		3.5	M3	0.7
	20			5 6 6.35 7 8 9.525	30	10	8	1	5		
	30			7 8 9.525 10 11 12 14	35	11	10	1.5	5.5	M4	1.7
	40			10 11 12 14 15 16	66	25	12	2	12.5	M5	4
	55			12 14 15 16 18 19 20 22 24 25 26 28	78.3	30.3	14	1.9	14	M6	7
	65		GR (Green) RD (Red)	15 16 18 19 20 22 24 25 26 28 30 32 35	90.3	35.3	15	2.4	17.2	M8	15
	80			15 16 18 19 20 22 24 25 26 28 30 32 35 40 45	114.2	45.2	18	2.9	21.7	M8	15
104			20 22 24 25 26 28 30 32 35 40 45 50 60	140.2	56.2	21	3.4	27.25	M10	25	

Part Number	Type	D	Spacers (Color)	d1, d2 (d1=d2)	L	L	B	C	F	Set Screw	
										M	Tightening Torque (N-m)
CPJK	30		BL (Blue) WH (White) RD (Red)	10 11 12 14	35	11	10	1.5	5.5	M4	1.7
	40			10 11 12 14 15 16	66	25	12	2	12.5	M5	4
	55			12 14 15 16 18 19 20 22 24 25 26 28	78.3	30.3	14.0	1.9	14.0	M6	7.0
	65		GR (Green) RD (Red)	15 16 18 19 20 22 24 25 26 28 30 32 35	90.3	35.3	15.0	2.4	17.2	M8	15.0
	80			15 16 18 19 20 22 24 25 26 28 30 32 35 40 45	114.2	45.2	18.0	2.9	21.7	M8	15.0
	104			20 22 24 25 26 28 30 32 35 40 45 50 60	140.2	56.2	21.0	3.4	27.3	M10	25.0

Couplings

Jaw Set Screw, continued

Part Number	Type	D	Allow. Torque (N-m)					Angular Misalign. (°)	Lateral Misalign. (mm)				Static Torsional Spring Constant (N-m/rad)				Max. Rotational Speed (r/min)	Inertia Moment of Inertia (Kg-m ²)	Allow. Axial Misalign. (mm)	Mass (g)
			BL	WH	RD	GR			BL	WH	RD	GR	BL	WH	RD	GR				
CPJ	14		0.7	1.2	2		1	0.15	0.10	0.1	—	8	14	22	—	45000	2.1×10 ⁻⁷	+0.6 0	7.3	
	20		1.8	3	5			0.20	0.15			16	29	55		31000	1.0×10 ⁻⁶	+0.8 0	18	
	30		4	7.5	12.5		0.20	0.15	46	73	130	21000	5.9×10 ⁻⁶	+1.0 0	46					
	40		1.9	10	17		0.15	0.10	380	570	1200	15000	4.0×10 ⁻⁵	+1.2 0	150					
	55				60	45	1	—	—	0.08	0.1	4000	2500	7500	1.7×10 ⁻⁴	+1.4 -0.5	344			
	65			180	120	8000						4000	6000	3.7×10 ⁻⁴	+1.5 -0.6	535				
	80			320	240		20000	10000	5000	1.1×10 ⁻³	+1.5 -0.6	1150								
	104			600	300		40000	20000	4000	4.8×10 ⁻³	+2.0 -0.6	2650								

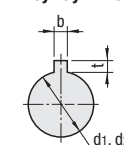
Ⓢ The allowable torque varies depending on temperature. See P.1091.

Part Number	Type	D	Allow. Torque (N-m)					Angular Misalign. (°)	Lateral Misalign. (mm)				Static Torsional Spring Constant (N-m/rad)				Max. Rotational Speed (r/min)	Inertia Moment of Inertia (Kg-m ²)	Allow. Axial Misalign. (mm)	Mass (g)
			BL	WH	RD	GR			BL	WH	RD	GR	BL	WH	RD	GR				
CPJK	30		4	7.5	12.5		1	0.20	0.15	0.1	—	46	73	130	—	21000	5.8×10 ⁻⁶	+1.0 0	45	
	40		4.9	10	17			0.15	0.10			380	570	1200		15000	3.8×10 ⁻⁵	+1.2 0	150	
	55				60	45	1	—	—	0.08	0.1	4000	2500	7500	1.7×10 ⁻⁴	+1.4 -0.5	344			
	65			180	120	8000						4000	6000	3.7×10 ⁻⁴	+1.5 -0.6	535				
	80			320	240		20000	10000	5000	1.1×10 ⁻³	+1.5 -0.6	1150								
	104			600	300		40000	20000	4000	4.8×10 ⁻³	+2.0 -0.6	2650								

Spacer is press-fitted into the body.

Part Number Example
 Part Number - Spacers - Shaft Bore Dia. d1 - Shaft Bore Dia. d2
 CPJ30 - WH - 8 - 10

Keyway Dimension



Ⓢ Applicable to CPJK only.

Shaft Bore Dia. d1, d2	b		t		Key Nominal Dimension b x h
	Dim.	Tolerance	Dim.	Tolerance	
10–12	4	±0.0150	1.8	+0.1 0	4×4
13–17	5		2.3		5×5
18–22	6	±0.0180	2.8	+0.2 0	6×6
23–30	8		3.3		8×7
31–38	10		3.3		10×8
39–44	12	±0.0215	3.3	+0.2 0	12×8
45–50	14		3.8		14×9
51–58	16		4.3		16×10
59–60	18		4.4		18×11

Part Number Alterations
 Part Number - Spacers - Shaft Bore Dia. d1 (LDC) - Shaft Bore Dia. d2 (RDC)
 CPJ14 - WH - LDC3.5 - RDC5.5

Ⓢ Applicable to CPJ only.

Alterations	Code	Spec.
Shaft Bore Dia.	LDC (Left Shaft) RDC (Right Shaft)	1mm Increment 3.175, 4.5, 9, 12.7, and 15.875 are available sizes. Ordering Code: LDC3.5 RDC5.5 Ⓢ Tolerances for LDC and RDC are values before slitting. Ⓢ Not applicable to CPJK. Ⓢ D55–104 cannot be changed.