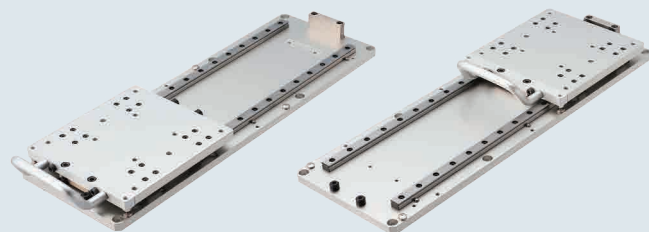


# Fixture Slides

## Linear Guide Type

**Features:** Sliders based on linear guides. By adopting those linear guides, the sliders achieve smooth sliding motion and thus, are suitable for applications frequently repeated.

X-Axis

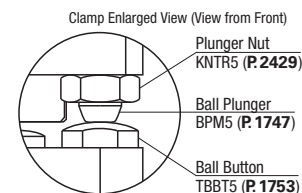


### Tips

Only on JGL250, by repositioning the ball buttons and stroke end stopper screws, the stroke can be shortened. Shortening the stroke can prevent the handle from protruding from the base plate O.D.

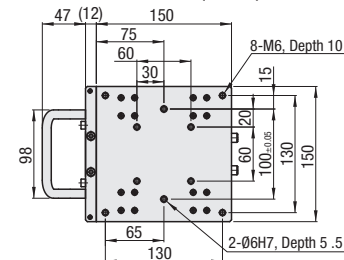
For how to adjust the stroke, see the Stroke Adjustment Method Table.

When plunger locking in the front side is not needed, remove the ball buttons.



By fitting the plunger tip ball in the depressed part of the ball button, the table is fixed.

### Table Dimensions (Common)



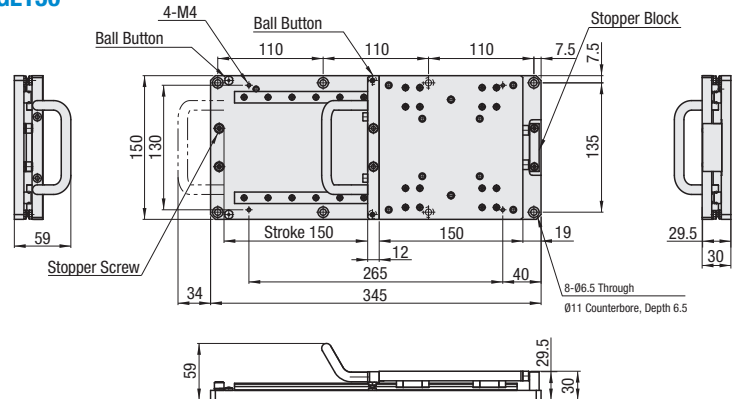
Main Body	Material	Surface Treatment
Table	Aluminum Alloy	Clear Anodize
Base Plate		
Knob		
Handle Bracket	1045 Carbon Steel	Electroless Nickel Plating
Linear Guide	Stainless Steel	—
Stopper Block	1045 Carbon Steel	Electroless Nickel Plating

### Stroke Adjustment Method

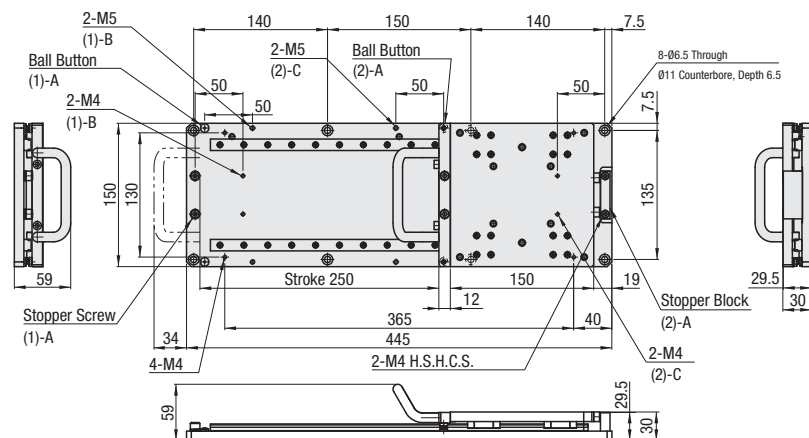
Stopper Parts		
Ball Button + Stopper (Screw or Block)		
Stroke after adjustment	Mounting Positions of Stopper Parts	
	(1) Pulling Side	(2) Pushing Side
250 (before shipping)	A	A
200	B	A
200	A	C
150	B	C

Only on JGL250, by recombining the stopper part mounting hole positions on the above two sides, the stroke can be changed.

### JGL150



### JGL250



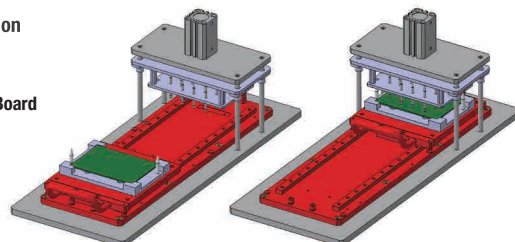
Part Number	Type	No.	Stroke (mm)	Table Size (mm)	Base Length (mm)	(Ref. Value) Required Thrust (N)	(Ref. Value) Plunger Holding Force (N)	Load Capacity (kN)	Weight (kg)
	250	150, 200, 250	150x150	445	2	23	4.5	3.4	

- Upon delivery, the stroke is set to 250 for JGL250.
- Required Thrust: Force required to move the table by using the knob
- Load Capacity: Max. allowable value of load applied vertically to the table surface
- Values on the (Ref. Value) columns in the above table are measured when no load is applied.

Part Number Example	Part Number
	JGL250

### Application Example

Testing Electronic Board

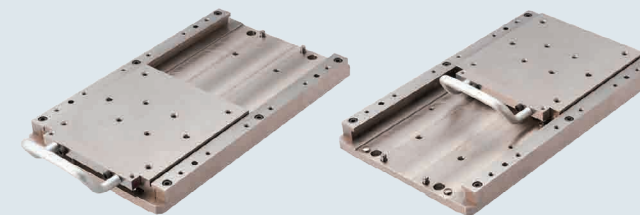


# Fixture Slides

## Guide Rail Type

**Features:** Have the sliding mechanism achieving high load capacity by leveraging guide rails. Are excellent in durability and suitable for machining, pressing or other load-intensive applications.

X-Axis



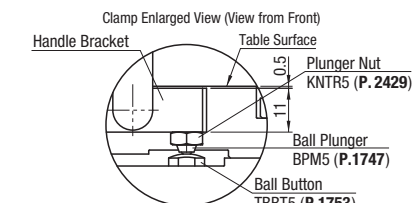
### Tips

By repositioning the ball buttons and stroke end stopper pins, the stroke can be shortened. Shortening the stroke can prevent the handle from protruding from the base plate O.D.

For how to adjust the stroke, see the Stroke Adjustment Method Table.

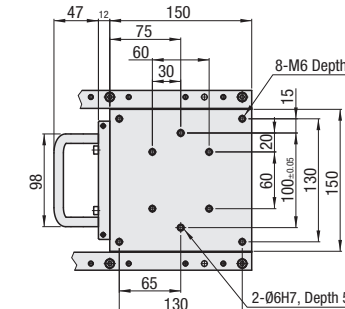
Antirust oil is applied to the sliding surface before delivery.

For the customer's convenience, in addition to the undersized and removable stopper pins installed onto the stopper part (4 places lengthwise), the oversized stopper pins are included with the product. Replace the undersized stopper pins with the oversized ones, if needed.



By fitting the plunger tip ball in the depressed part of the ball button, the table is fixed.

### Table Dimensions (Common)



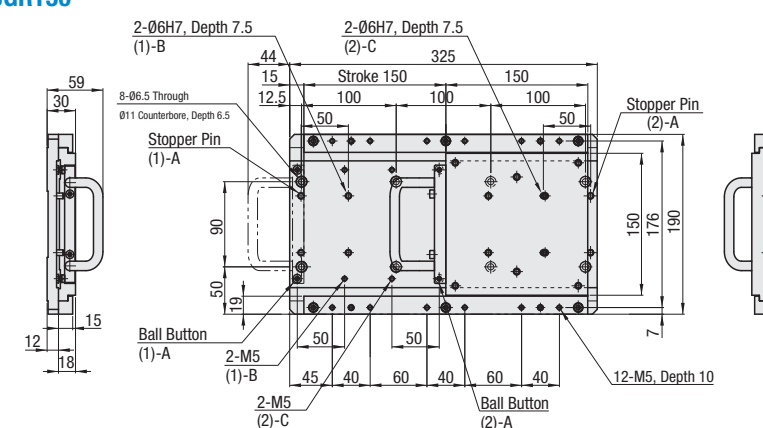
Main Body	Material	Surface Treatment
Table	1045 Carbon Steel Thermal Refined	Electroless Nickel Plating
Plate		
Guide Rail		
Handle Bracket	1045 Carbon Steel	—
Knob	Aluminum Alloy	Clear Anodize

### Stroke Adjustment Method

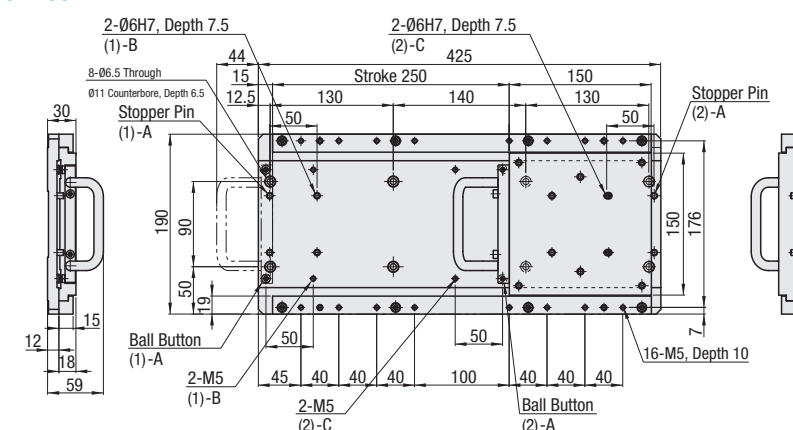
Stopper Parts			
Ball Button + Stopper (Screw or Block)			
Stroke after adjustment	Mounting Positions of Stopper Parts		
	(1) Pulling Side	(2) Pushing Side	
JGR150	JGR250		
150 (before shipping)	250 (before shipping)	A	A
100	200	B	A
100	200	A	C
50	150	B	C

By recombining the stopper part mounting hole positions on the above two sides, the stroke can be changed.

### JGR150



### JGR250



Part Number	Type	No.	Stroke (mm)	Table Size (mm)	Base Length (mm)	(Ref. Value) Required Thrust (N)	(Ref. Value) Plunger Holding Force (N)	Load Capacity (kN)	Weight (kg)
	250	150, 200, 250	150x150	425	10	30	37.2	11.1	

- Upon delivery, the stroke is set to 150 for JGR150, and to 250 for JGR250.
- Required Thrust: Force required to move the table by using the knob (on the sliders having antirust oil applied)
- Load Capacity: Max. allowable value of load applied vertically to the table surface
- Values on the (Ref. Value) columns in the above table are measured when no load is applied.

Part Number Example	Part Number
	JGR150

### Application Example

Press-Fitting Bearing

