

Single Axis Actuators LX15

Standard and Cover Type



Linear Actuators

Misumi Patent

Standard Type Cover Type

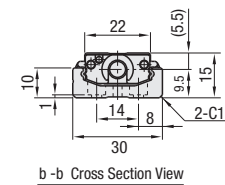
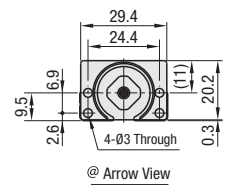
RoHS10

Specifications	
LX15	
Standard	
Screw Shaft Diameter (mm)	5
Lead (mm)	2
Accuracy	High Grade / Precision Grade
Accessories	
(1) Motor Adapter Plate	
Material: 5052 Aluminum Alloy Surface Treatment: Black Anodize	
(2) Adapter Plate Screw 2 pcs.	
Material: Stainless Steel XM7	

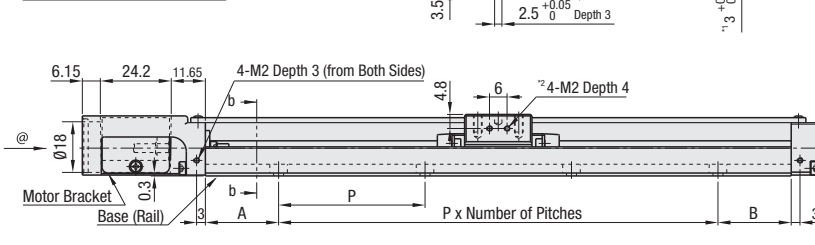
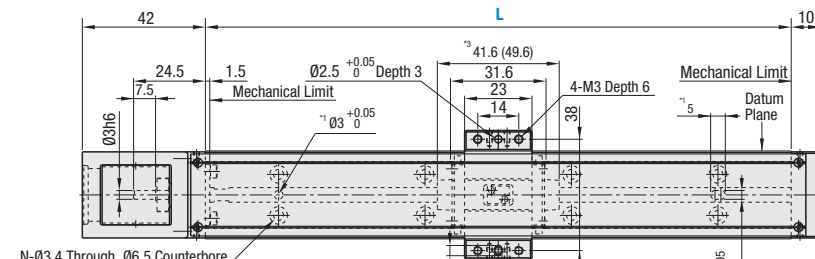
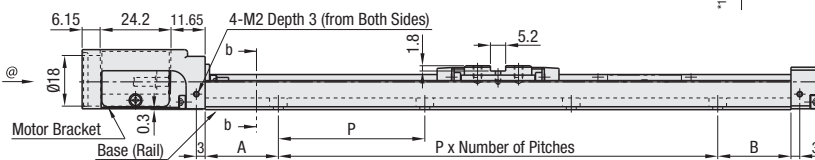
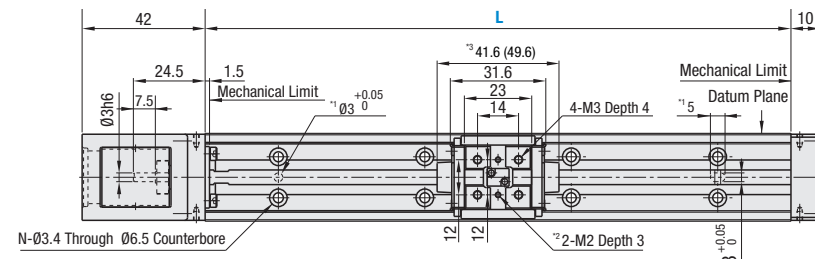
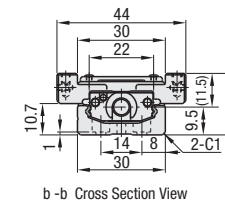
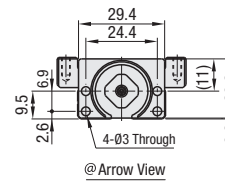
Part Number	Standard Grease		Low Particulate Generation Grease		Lubrication Unit MX-Equipped (Standard Grease)	
	High Grade	Precision Grade	High Grade	Precision Grade	High Grade	Precision Grade
Lead 2	LX1502 (C)	LX1502 (C) P	LX1502 (C) G	LX1502 (C) PG	LX1502 (C) -MX	LX1502 (C) P-MX

(C) is for Cover Type. (P) Low Dust Generation Grease Information P.523. (MX) Lubrication Unit MX Information P.519.

Standard Type



Cover Type



- Effective stroke is the value with 2.5 mm margin on each side from mechanical limits, i.e., 5 mm in total.
- Precision specification value is the value achieved after fixing rails. (It is not a value before tightening the rail screws.) For values, see P.522.

- *1: Dowel Holes for Base Positioning
- *2: Tapped Holes for Sensor Flag Mount
- *3: Value in () is for Lubrication Unit MX-equipped Type.

Part Number	Block Qty.	Motor Adapter Plates	Base Length (L)	* Effective Stroke		Total Mass (kg)		Mounting Hole Dimensions				
				High Grade	*Precision Grade	B1	MX-Equipped (B1)	Standard	Cover	A	P	B
Standard Grease LX1502 (C)	(1 pc.)	B1	75	26.9	—	0.13	0.18	12.5	50	12.5	1	4
Standard Grease LX1502 (C) P			100	51.9	43.9	0.17	0.22	25				
Low Dust Generation Grease LX1502 (C) G			125	76.9	68.9	0.22	0.28	12.5				
Lubrication Unit MX-Equipped, Standard Grease LX1502 (C) -MX			150	101.9	93.9	0.29	0.35	25				
Standard Grease LX1502 (C) P-MX			175	126.9	118.9	0.35	0.41	12.5				
Low Dust Generation Grease LX1502 (C) PG			200	151.9	143.9	0.38	0.45	25				

* Precision Certificate is enclosed with precision grade products. * Motor adapter plate and mounting screws are not included with No Adapter Plate Type. * Effective stroke is indicated in dimensions with a margin of 2.5 mm each from the ends. * (C) is for Cover Type. * 0.002 kg will be added to MX-equipped types

Single Axis Actuators LX15

Standard and Cover Type, continued

For Single Axis Actuator LX Series selections, please use our 2D and 3D CAD data and Technical Calculation Software (free of charge). <http://www.misumiusa.com/lx-actuator/>

Linear Actuators

A1525 Servo 25 Sq.		ST1528 Stepping 28 Sq. NEMA 11	
A1528 Servo 28 Sq.		UT1542 Stepping 42 Sq. NEMA 17	
T1528 Stepping 28 Sq. NEMA 11		ST1542 Stepping 42 Sq. NEMA 17	

Note: The Motor Adapter protrudes beyond the rail at * marked area.

Accuracy Standards

Accuracy Standards	High Grade	Precision Grade
Positioning (mm)	0.04	0.02
Backlash (mm)	0.01	0.002
Positioning Repeatability (mm)	±0.004	±0.003
Running Parallelism (mm)	0.02	0.01
Starting Torque (N*cm)	0.8	0.8

- For Max. Velocity, see P.522.
- For Moment of Inertia, see P.521.

Part Number Example

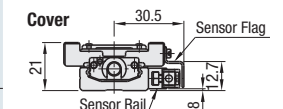
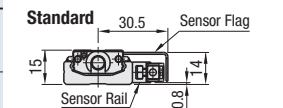
Part Number - Block Qty. - Motor Adapter Plates - Base Length (L)
LX1502C-MX - B1 - A1525 - 100

Part Number Alterations

Part Number - Block Qty. - Motor Adapter Plates - Base Length (L) - (Code)
LX1502 - B1 - A1525 - 100 - XW1

LX Part Number	Code (# is Sensor Qty.) *For L≤100, Max 2 For L≥125, Max. 3	Sensor Qty.		Sensor Rail		Sensor (*Qty per Sensor Included)		Sensor Flag	
		GX-F8A (ON when near)	GX-F8B (ON when away)	Rail (1 pc.)	Mounting Screw (Pitch + 1pc.)	Sensor Mounting Screw (1 pc.)	Sensor Flag (1 pc.)	Sensor Flag Mounting Screw	
LX1502	XA_	—	—	Dedicated	Phillips Flat Head Screw M2-4 (2 pcs.)	CSST3-10	Dedicated	Pan Head Screw M2-3 (1 pc.)	Sensor Flag
	XB_	—	—						
LX1502C	FA_	—	—						
	FB_	—	—						
LX1502	XW1	1 pc.	1 pc.						
	XW2	2 pcs.	2 pcs.						
	XW3	2 pcs.	1 pc.						
LX1502C	FW1	1 pc.	1 pc.						
	FW2	2 pcs.	2 pcs.						
	FW3	2 pcs.	1 pc.						

Proximity Sensor Installation Drawing



The sensor can also be installed on the opposite side.

*Sensors are not sold separately.