

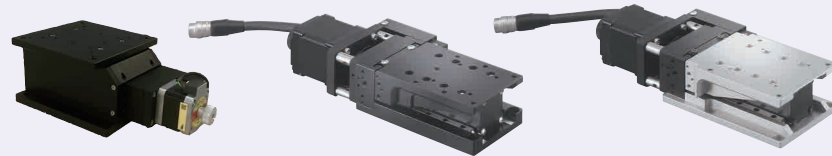


For CAD data, see the MISUMI website.

■ **Features:** Heavy Load Type with 196N of load capacity and Low Profile Type with 40mm of height are added to the product line-up.

■ Horizontal Surface Z-Axis - High Load Capacity

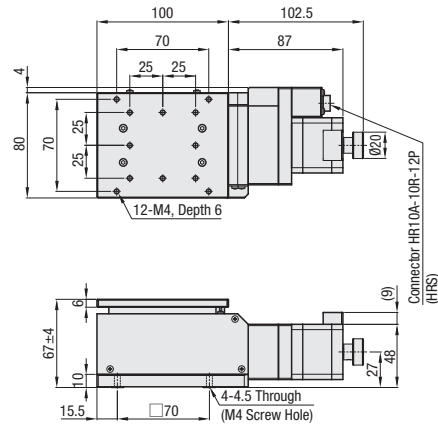
■ Horizontal Surface Z-Axis, Low Profile



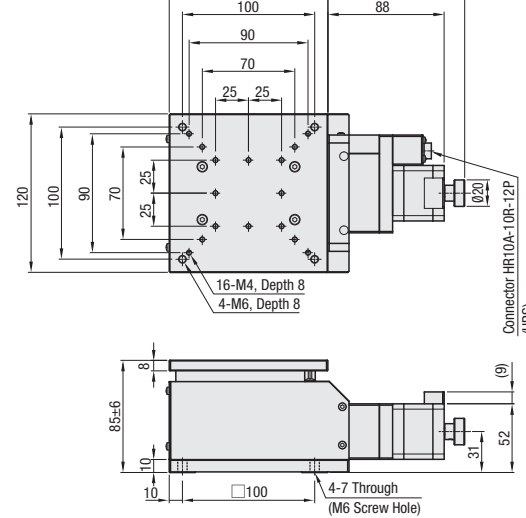
M Material: Aluminum Alloy
S Surface Treatment ZLMPG, ZLMPG604F: Black Anodize ZLMPG704F: Clear Anodize
A Accessory ZLMPG808C: SCB4-16 (4 pcs.) ZLMPG12012C: SCB6-16 (4 pcs.) ZLMPG: SCB4-14 (4 pcs.)

Ⓜ The sensor cover position shown for Low Profile Type on the photo is L (Standard).

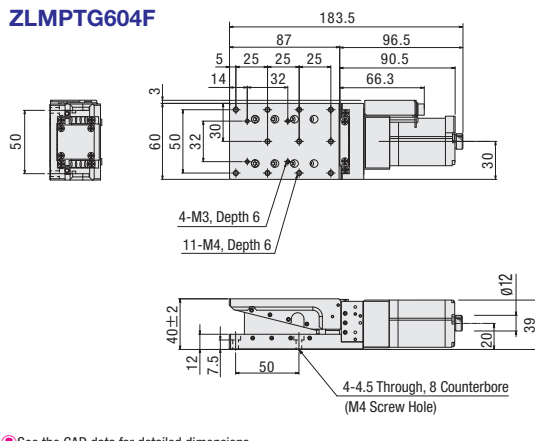
ZLMPG808C



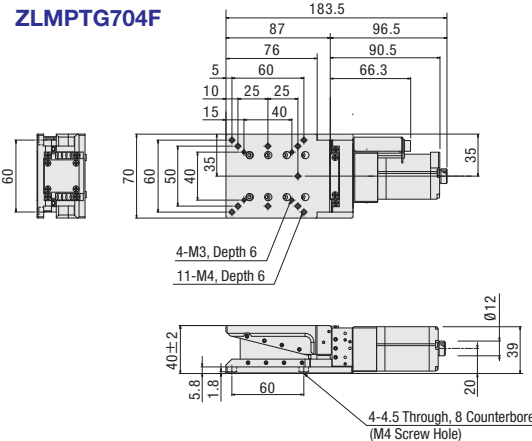
ZLMPG12012C



ZLMPG604F



ZLMPG704F



Ⓜ See the CAD data for detailed dimensions.

Type	Part Number No.	Cable	Mechanical Standards			Accuracy Standards			
			Stage Surface (mm)	Travel Distance (mm)	Weight (kg)	Unidirectional Positioning Accuracy	Pitching	Yawing	Rolling
High Load Capacity ZLMPG	808C	N (Cable not included (separately sold)) For cables separately sold, see MSCB_ option on P. 1735-95	80×100	8	2.0	7μm or less	0.24	0.12	0.03
	12012C		120×120	12	3.6		0.2	0.11	0.01
Low Profile ZLMPG	604F	N (Cable not included (separately sold)) For cables separately sold, see MSCB_ option on P. 1735-95	60×60	4	1.14	7μm or less	0.2	0.04	0.14
	704F		70×70		1.18				

Ordering Example: Part Number ZLMPG808C - Cable N



Configure Online

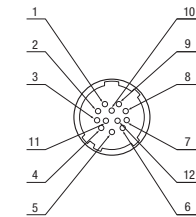
Common Specifications

Type	ZLMPG	ZLMPG
Part No.	808C/12012C	604F/704F
Feed Screw	Ball Screw Ø6/Ø8, Lead 1	Ball Screw Ø8, Lead 1
Guide	Cross Roller Guide	
Positioning repeatability	Within ±0.5μm	
Load Capacity	196N	68.6N
Lost Motion	1μm or less	
Parallelism	50μm or less	

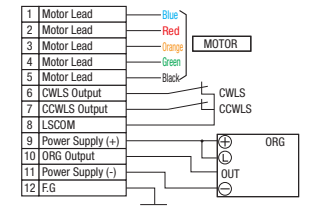
Electrical Specifications

Type	ZLMPG	ZLMPG
Motor	Type	5-Phase Stepping Motor 0.75A/Phase
	Step Angle	0.72°
Resolution (Pulse)	Full/Half	≈0.73μm/0.365μm
		0.5μm/0.25μm
Max. Speed		≈3.7mm/sec
		2.5mm/sec
Connector	Part Number	HR10A-10R-12P(73) (Hirose Electric Co., LTD.)
	Compatible Receptacle Connector	HR10A-10P-12S(73) (Hirose Electric Co., LTD.)
Limit Sensor	Home Position Sensor (ORG1)	Provided
	Stt Home Origin Sensor (ORG2)	Not Provided
Power Supply Voltage		DC5~24V±10%
	Current Consumption	35mA or less
Sensor	Control Output	NPN Open Collector Output DC5~24V, 100mA or less Residual Voltage: 0.8V or Less (when load current is 100mA) Residual Voltage: 0.4V or Less (when load current is 40mA)
	Output Logic*	Detecting (Dark): Output Transistor OFF (Non-Conducting)

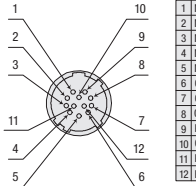
Connector Pin Configuration ZLMPG



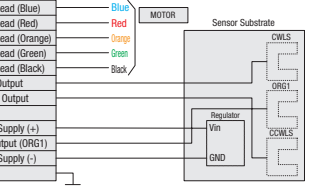
Wiring Diagram ZLMPG



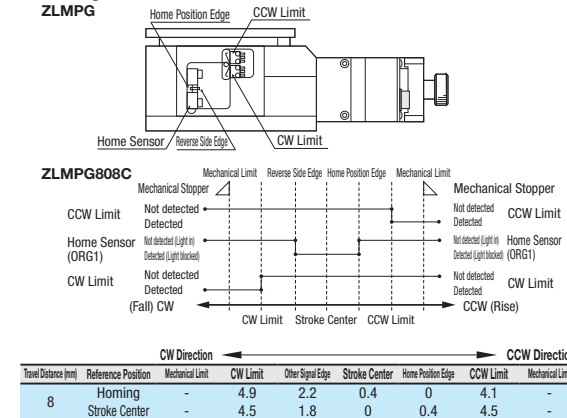
Connector Pin Configuration ZLMPG



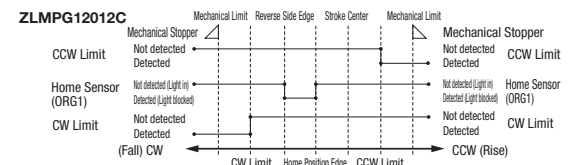
Wiring Diagram ZLMPG



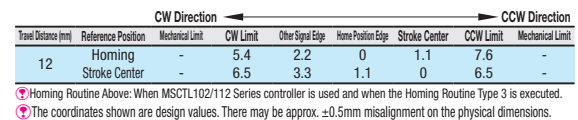
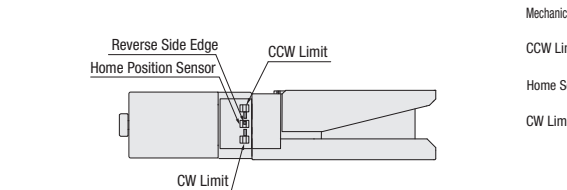
Timing Chart ZLMPG



ZLMPG12012C



ZLMPG



(Unit: mm)	Reference Position	Mechanical Limit	CW Limit	Reverse Side Edge	Home Position Edge Stroke Center	CCW Limit	Mechanical Limit
ZLMPG604F	Homing	2.5	2.2	1.5	0	2.2	2.5
ZLMPG704F	Homing	2.5	2.2	1.5	0	2.2	2.5

Ⓜ Homing Routine Above: When MSCTL102/112 Series controller is used and when the Homing Routine Type 3 is executed.

Ⓜ The coordinates shown are design values. There may be approx. ±0.5mm misalignment on the physical dimensions.

Ⓜ For details about Homing, see P. 1735-97