



# Flat Air Nozzles

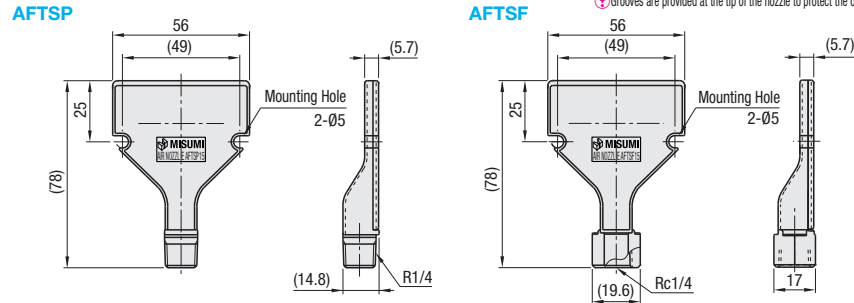
## Standard

Old standard type Flat Air Nozzles (AFTP, AFTA, AFTS, AFTF) have been discontinued.

Type	Material	Max. Operating Pressure	Heat Resistance Temp.	Screw Shape	Thread Breakdown Torque
AFTSP	ABS Resin Plastic	0.7MPa	70°C	Threaded	15N·m
AFTSF	ABS Resin Plastic	0.7MPa	70°C	Tapped	10N·m

**Applications:** For removal of oil, water drops and chips, cooling/drying and air curtain, etc.

- To prevent damage
  - Avoid excessive tightening of screws.
  - Avoid shocks to the screws.
- Grooves are provided at the tip of the nozzle to protect the orifice.



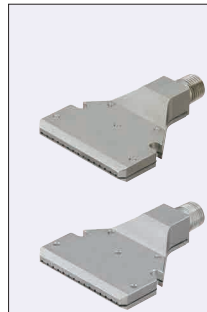
RoHS 10

Part Number	Orifice	Air Flow Rate NL/Min (for 0.3MPa)	Weight (g)	Unit Price	Volume Discount Rate
AFTSP	10	13-□0.7	240	16.8	5-39 40-99 100-200
AFTSP	15	13-□0.9	260	16.5	
AFTSF	25	13-□1.2	280	16.2	
AFTSF	15	13-□0.9	240	16.5	

For orders larger than indicated quantity, please check with WOS.

Part Number  
AFTSP15

Configure Online

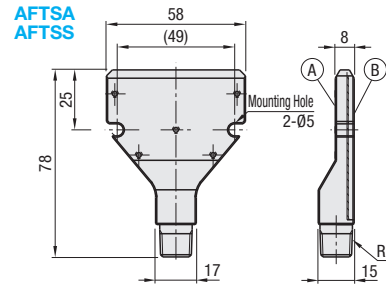


RoHS 10

Type	Material	Max. Operating Pressure	Heat Resistance Temp.
AFTSA	5052 Aluminum Alloy	0.4MPa	200°C
AFTSS	304 Stainless Steel	0.4MPa	200°C

**Applications:** For removal of oil, water drops and chips, cooling/drying and air curtain, etc.

- Do not disassemble the main body.
- For AFTSA and AFTSS, MISUMI logo, Product Name or Part Number is not engraved.
- Grooves are provided at the tip of the nozzle to protect the orifice.
- A gasket is inserted between A and B.



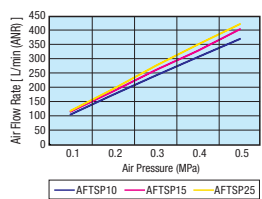
Part Number	Orifice	Air Flow Rate NL/min (for 0.3MPa)	Weight (g)	Unit Price	Volume Discount Rate
AFTSA	15	13-□0.9	240	60	5-9 10-19 20-30
AFTSS	15	13-□0.9	240	165	

For orders larger than indicated quantity, please check with WOS.

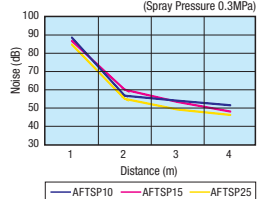
Part Number  
AFTSA15

Configure Online

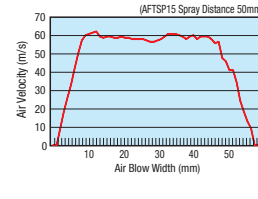
**Air Flow Rate Property Table**



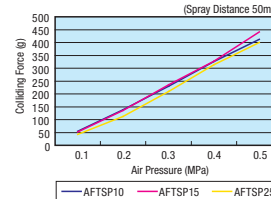
**Quietness Property Table** (Spray Pressure 0.3MPa)



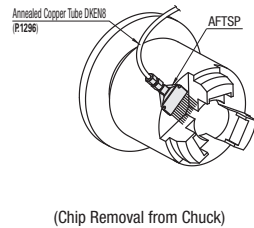
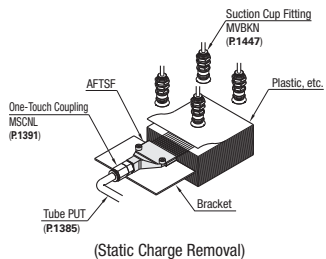
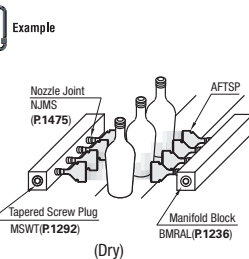
**Velocity Characteristic Table** (AFTSP15 Spray Distance 50mm)



**Air Colliding Force Property Table** (Spray Distance 50mm)



Values on the graph are for reference, not guaranteed.



In line arrangement is recommended for drying after cleaning process.

Tapped Type (AFTSF) can be directly mounted on threaded plumbing terminals (without having to use sockets).

Effective for chip removal when opening machining fixtures.



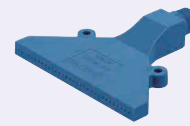
# Flat Air Nozzles

## Wide / Compact

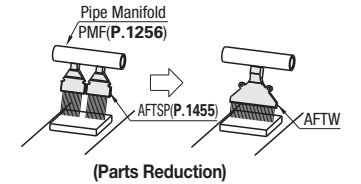
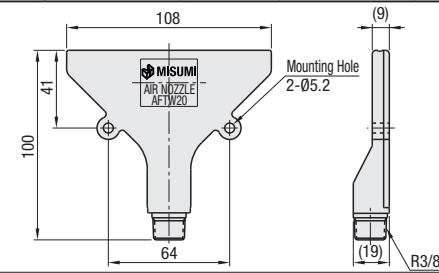
### Wide Type

Type	Material	Max. Operating Pressure	Thread Breakdown Torque	Heat Resistance Temp.
AFTW	ABS Resin Plastic	0.7MPa	10N·m	70°C

**Features**  
Blow Port width approx. two times as wide as Standard Type (AFTSP).  
To prevent damage  
Avoid excessive tightening of screws.  
Avoid shocks to the screws.



RoHS 10



Part Number	Orifice	Air Flow Rate NL/Min (for 0.3MPa)	Weight (g)	Unit Price	Volume Discount Rate
AFTW	20	32-01	290	40	5-39 40-99 100-200

For orders larger than indicated quantity, please Misumi website.

Ordering Example  
AFTW20

Days to Ship  
Configure Online

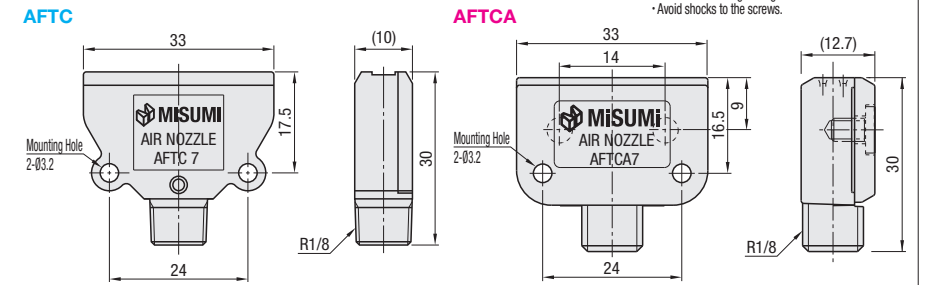
### Compact

Type	Material	Surface Treatment	Max. Operating Pressure	Heat Resistance Temp.
AFTC	ABS Resin Plastic	-	0.7MPa	70°C
AFTCA	Aluminum Casting Alloy 303	Electroless Nickel Plating	0.7MPa	200°C

**Features**  
More compact than Standard Type (AFTSP). (Width: Approx. 40%, Overall Length: Approx. 60% more compact)  
To prevent damage  
Avoid excessive tightening of screws.  
Avoid shocks to the screws.



RoHS 10



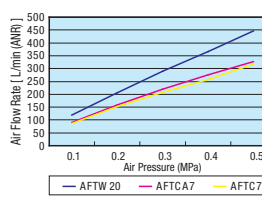
Part Number	Orifice	Air Flow Rate NL/Min (for 0.3MPa)	Weight (g)	Unit Price	Volume Discount Rate	Unit Price	Volume Discount Rate
AFTC	7	22-00.7	210	5	5-39 40-99 100-200	1~4 pc(s)	5-9 10-19 20-30
AFTCA	7	5-00.8, 6-01.0	220	17	-	-	-

For orders larger than indicated quantity, please check with WOS.

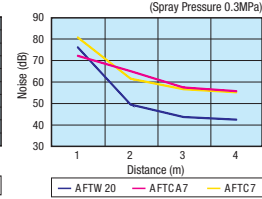
Ordering Example  
AFTC7

Days to Ship  
Configure Online

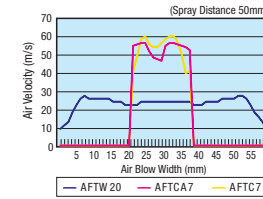
**Air Flow Rate Property Table**



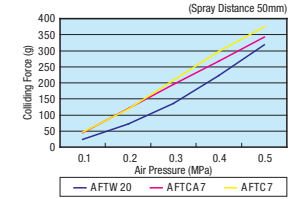
**Quietness Property Table** (Spray Pressure 0.3MPa)



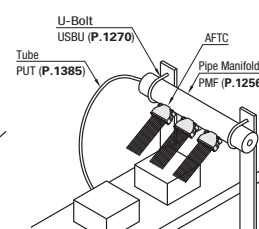
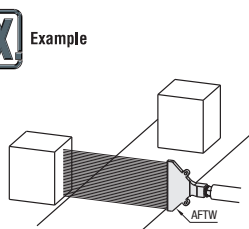
**Velocity Characteristic Table** (Spray Distance 50mm)



**Air Colliding Force Property Table** (Spray Distance 50mm)



Values on the graph are for reference, not guaranteed.



**Dimensional Comparison**

