



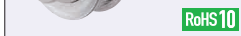
Timing Pulleys - T2.5

Small Dia. Size Type has become available.

| Type | Belt Width | Material | | Surface Treatment | Accessories |
|------|------------|-----------------------------|----------------|-------------------|---------------------|
| | T2.5 | Pulley | Flange | Clear Anodize | Set Screw |
| TPPA | ● | A2000 Series Aluminum Alloy | Aluminum Alloy | Clear Anodize | 304 Stainless Steel |

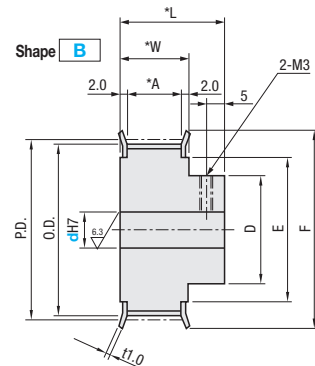
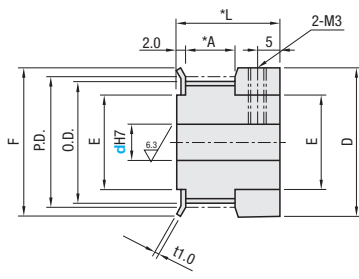
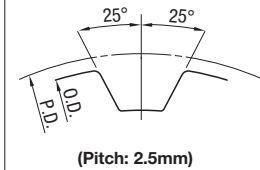
Flange is installed, and set screws are included with Shaft Bores P, N and C.

Pulley Shape
Shape **K**



RoHS 10

Standard Tooth Profile



Shaft Bore Specs. H (Round hole) and V/F (Stepped Hole) do not have tapped holes.

Number of Teeth / Dimension

| mm | Number of Teeth | | | | | | | | | | | | | | | | | | |
|------|-----------------|-------|-------|-------|-------|-------|-------|-------|-------|-------|-------|-------|-------|-------|-------|-------|-------|-------|-------|
| | 14 | 15 | 16 | 18 | 20 | 22 | 24 | 25 | 26 | 28 | 30 | 32 | 34 | 36 | 40 | 44 | 48 | 50 | 60 |
| P.D. | 11.14 | 11.94 | 12.73 | 14.32 | 15.92 | 17.51 | 19.10 | 19.89 | 20.69 | 22.28 | 23.87 | 25.46 | 27.06 | 28.65 | 31.83 | 35.01 | 38.20 | 39.79 | 47.75 |
| O.D. | 10.60 | 11.40 | 12.20 | 13.80 | 15.40 | 17.00 | 18.55 | 19.35 | 20.15 | 21.75 | 23.35 | 24.95 | 26.55 | 28.10 | 31.30 | 34.50 | 37.70 | 39.25 | 47.25 |
| D | 14 | 14 | 14 | 18 | 21 | 12 | 12 | 12 | 12 | 14 | 14 | 16 | 16 | 16 | 18 | 24 | 26 | 28 | 30 |
| F | 14 | 14 | 14 | 18 | 20 | 22 | 25 | 25 | 25 | 28 | 28 | 30 | 32 | 32 | 35 | 44 | 44 | 44 | 50 |
| E | 8 | 8 | 8 | 11 | 13 | 14 | 16 | 16 | 16 | 18 | 18 | 20 | 23 | 23 | 25 | 28 | 28 | 32 | 38 |

Tapped Hole Dimensions (Shaft Bore Specs.: P, N, C)

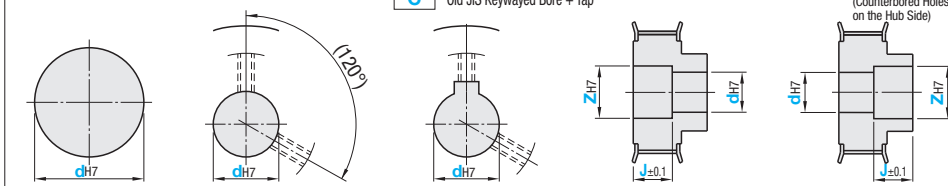
| dH7 Shaft Bore I.D. (Coarse) | M | Accessories: Set Screw |
|------------------------------|----|------------------------|
| 4, 5 | M3 | M3x3 |
| 6-14 | M4 | M4x3 |

Belt Nominal Width / Dimension

| mm | Nominal |
|-------------|---------|
| T25070 | |
| A (Shape K) | 6 |
| A (Shape B) | 8 |
| W (Shape K) | 10 |
| W (Shape B) | 12 |
| L | 20 |

Shaft Bore Specs. The shaft bore will not have a surface treatment.

- H** Round Hole
- P** Round Hole + Tap
- C** New JIS Keywayed Bore + Tap / Old JIS Keywayed Bore + Tap
- V** Stepped Hole
- F** Stepped Hole (Counterbored Holes on the Hub Side)



No tapped holes or set screws.
 For Keyway Dimension Details, see P.1377. When selecting the shaft bore dia. 10 and the keyway width 4.0mm (height 1.8mm) for New JIS Keywayed Bore, specify NK10.
 No tapped holes or set screws.
 Applicable to Shape B only. No tapped holes or set screws.

| Type | Number of Teeth | Type Nominal Width | Pulley Shape | Shaft Bore Specifications (-): Specify in 1mm Increment, (,): Select the former or latter | | | | |
|------------------|-----------------|--------------------|------------------|---|---------------------|-------------------|-------------------|--|
| | | | | H Round Hole | P Round Hole + Tap | N, C Keyway + Tap | V, F Stepped Hole | |
| | | | | | | | V, F | Z Z-d ₂ 2 (0.1mm Increment) |
| Aluminum TPPA | 14 | T25070 | K | 4 | 4 | - | - | - |
| | 15 | | | 4 | 4 | - | - | - |
| | 16 | | | 4, 5 | 4, 5 | - | - | - |
| | 18 | | | 4, 5 | 4, 5 | - | - | - |
| | 20 | | | 5, 6, 6.35 | 5, 6, 6.35 | - | - | - |
| | 22 | | | 5, 6, 6.35 | 5, 6, 6.35 | - | 5, 6 | 7, 8 |
| | 24 | | | 5, 6, 6.35 | 5, 6, 6.35 | - | 5, 6 | 7, 8 |
| | 25 | | | 5, 6, 6.35 | 5, 6, 6.35 | - | 5, 6 | 7, 8 |
| | 26 | | | 5, 6, 6.35 | 5, 6, 6.35 | - | 5, 6 | 7, 8 |
| | 28 | | | 5, 6, 6.35 | 5, 6, 6.35 | - | 5, 6 | 7, 8 |
| | 30 | | 5, 6, 6.35 | 5, 6, 6.35 | - | 5, 6 | 7, 8 | |
| | 32 | | 5, 6, 6.35, 7, 8 | 5, 6, 6.35, 7, 8 | 8 | 5-10 | 7-12 | |
| | 34 | | 5, 6, 6.35, 7, 8 | 5, 6, 6.35, 7, 8 | 8 | 5-10 | 7-12 | |
| | 36 | | 5, 6, 6.35, 7, 8 | 5, 6, 6.35, 7, 8 | 8 | 5-13 | 7-15 | |
| | 40 | | 5, 6, 6.35, 7, 8 | 5, 6, 6.35, 7, 8 | 8 | 5-14 | 7-16 | |
| | 44 | | 6, 6.35, 7-10 | 6, 6.35, 7-10 | 8, 10, NK10 | 6-14 | 8-16 | |
| | 48 | | 6, 6.35, 7-12 | 6, 6.35, 7-12 | 8, 10, NK10, 11, 12 | 6-14 | 8-16 | |
| | 50 | | 6, 6.35, 7-12 | 6, 6.35, 7-12 | 8, 10, NK10, 11, 12 | 6-22 | 8-24 | |
| | 60 | | 6, 6.35, 7-14 | 6, 6.35, 7-14 | 8, 10, NK10, 11-14 | 6-24 | 8-26 | |

Shaft Bore Dia. 8, 11, 13, 14 are not available for Shaft Bore Spec. C.

Ordering Example
 (Shaft Bore Specs.: H, P, N, C) **TPPA18T25070** - **K** - **P4**
 (Shaft Bore Specs.: V, F) **TPPA60T25070** - **B** - **V15** - **Z20** - **J8**

Days to Ship [Configure Online](#)

Price [Configure Online](#)

| Number of Teeth | Body Price 2017 Aluminum Alloy (Clear Anodize) | Shaft Bore Machining Charge (Body Price +) | | |
|-----------------|--|--|-----------|-----------|
| | T25070 | P Hole | N, C Hole | V, F Hole |
| 14 | | | | |
| 15 | | | | |
| 16 | | | | |
| 18 | | | | |
| 20 | | | | |
| 22 | | | | |
| 24 | | | | |
| 25 | | | | |
| 26 | | | | |
| 28 | | | | |
| 30 | | | | |
| 32 | | | | |
| 34 | | | | |
| 36 | | | | |
| 40 | | | | |
| 44 | | | | |
| 48 | | | | |
| 50 | | | | |
| 60 | | | | |

Alterations [Part Number](#) - [Pulley Shape](#) - [Shaft Bore Specs., I.D.](#) - [Z](#) - [J](#) - (KC90...etc.)
TPPA40T25070 - **B** - **P5** - **FC33**

| Alterations Code | Set Screw Angle KC90 | Flange Not Swaged NFC | Flange Swaged on One Side RFC, LFC | Flange Cut FC |
|------------------|--|--|---|---|
| Spec. | Changes an angle of set screw to 90. | (Flange 2 pcs. Included) Ordering Code: NFC | (Flange 1 pc. Included) Ordering Code: RFC Not applicable to Shape K. | Cut the flange O.D. in 0.5mm increment. Ordering Code: FC17 Application Notes: FC=(O. D.)+1 FC<=F-2 No surface treatment is applied on flange circumference. |

| Alterations Code | Side Through Hole / Side Tapped Hole, 3 places KTC, QTC | Side Through Hole / Side Tapped Hole, 4 places KFC, QFC | Tapped Hole Dimensions TPC | Changes the length of the included set screws. SLH |
|------------------|---|---|---|---|
| Spec. | Machine Through Hole / Tapped Hole on the side surface of hub side Ordering Code (Through Hole): KTC20-K5.0 Ordering Code (Tapped Hole): QTC28-M4 Selection (Through Hole) K Selection: K4.0~K13.0 (0.5mm Increment) Selection (Tapped Hole) M Selection: M3, M4, M5, M6, M8 Application Notes: Not applicable to Shape K. Not applicable to Shaft Bore Spec. F. When KTC/QTC is selected for P, N, and C Shaft Bores, KC90 alteration can not be selected. | Machine Through Hole / Tapped Hole on the side surface of hub side Ordering Code (Through Hole): KFC20-K5.0 Ordering Code (Tapped Hole): QFC28-M4 Selection (Through Hole) K Selection: K4.0~K13.0 (0.5mm Increment) Selection (Tapped Hole) M Selection: M3, M4, M5, M6, M8 Application Notes: Not applicable to Shape K. Not applicable to Shaft Bore Spec. F. Specify KC90 when selecting KFC/QFC for Shaft Bore Specs. P, N and C. Side holes and tooth side tapped holes might interfere with each other. For details, see the relevant CAD data. | Ordering Code: TPC5 Application Notes: Applicable to Shaft Bore Specs. P, N, C only. M TPC M3 M4 M4 M3 | Ordering Code: SLH10 Application Notes: Applicable to Shaft Bore Specs. P, N, C only. Set Screw SLH M3x3 6 M4x3 5, 8 |

For details, see the "Timing Pulley Alterations - Overview" section (P.1378).