



Stoppers, Transfer Rollers

Conveyor Resource Site: <http://www.misumiusa.com/conveyor/>
 Conveyor Selection, Design Your Own Conveyor Kit, & Maintenance Parts Search

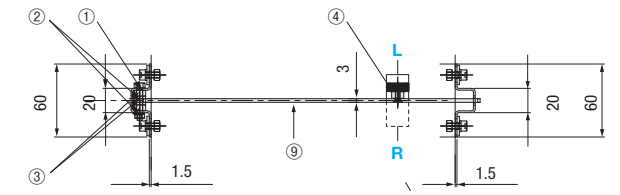


Conveyor End Tables

■ Features: Stoppers with open/close mechanism. The stoppers with engineering plastic rails are also available.

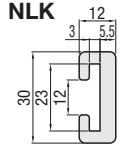


CSTP
CSTE
 (Engineering Plastic Rail Set)

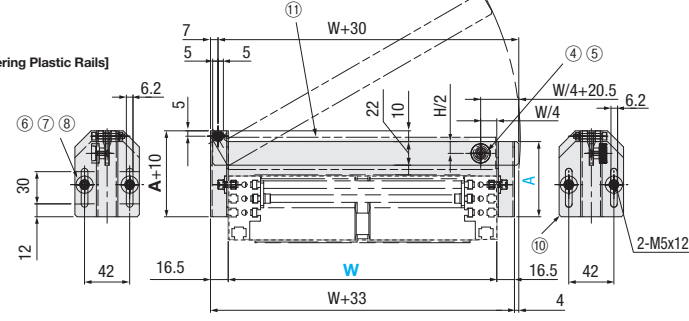


Part No.	Part Name	Qty.	Material
1	Hinge Pin	1	304 Stainless Steel
2	Metal Washer	2	304 Stainless Steel
3	Plastic Washer	2	Polyacetal
4	Knurled Plastic Clamp Knob - Tapped	1	A65 Hex, 304 Stainless Steel
5	Hex Socket Head Cap Screw	1	304 Stainless Steel
6	Hex Socket Head Cap Screw	4	304 Stainless Steel
7	Washer for Slotted Holes	4	304 Stainless Steel
8	Spring Washer	4	304 Stainless Steel
9	Stopper Plate	1	304 Stainless Steel
10	Bracket	2	304 Stainless Steel
11	Engineering Plastic Rail	1	Ultrahigh molecular weight polyethylene

[Applicable Engineering Plastic Rails]



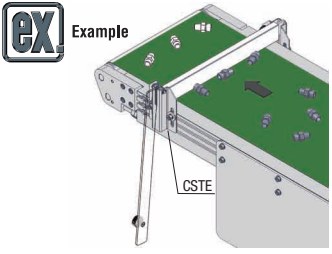
[Matching Plate Dimension 22x3]



- Since it can be fully opened, install it so that the worker can stand on the fulcrum shaft side. (See App. Example.)
- The engineering plastic rails can be secured by pressing down the thread part of the knob.
- Please note that the workpiece may be lifted if a belt with high friction coefficient is used.

Part Number	W 1mm Increment	A	Knob Mounting Direction	Unit Price	
				A70	A120
CSTP	65~100	70	L		
	101~200				
	201~300	120	R		
	301~400				

Part Number	W 1mm Increment	A	Unit Price	
			A70	A120
CSTE	65~100	70		
	101~200			
	201~300	120		
	301~400			



Price [Configure Online](#)

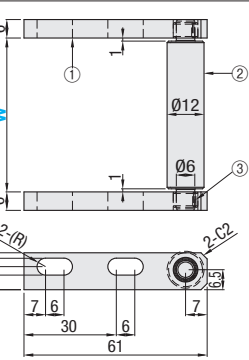
Ordering Example: Part Number - W - A - Knob Mounting Direction
 CSTP - 250 - 70 - L
 CSTE - 200 - 120

Days to Ship [Configure Online](#)

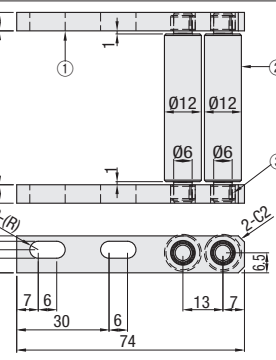
■ Features: The roller that makes conveyance between conveyors smoother.



CGNR1
 (Number of Rollers: 1)



CGNR2
 (Number of Rollers: 2)



- Install with good parallelism.
- Bushings are pressed-in. Cannot be removed.
- When selecting Plastic Rollers: Limit the load per roller to 3kgf or less.

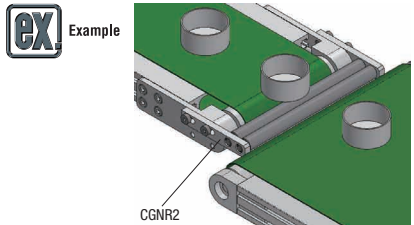
	① Bracket		② Roller		③ Oil-Free Bushing
	Material	Surface Treatment	Plastic	Steel	
Material	6063 Aluminum Alloy	Clear Anodize	Polyacetal	304 Stainless Steel	Ethylene tetrafluoride resin layer with filler material Sintered bronze layered steel back metal layer (Low Carbon Steel(C, Tin Plated))

Part Number	Type	Roller Material	W 1mm Increment	Unit Price		
				W30~100	W101~200	W201~300
CGNR	1	P (Polyacetal)	30~300			
	2					
	1	S (304 Stainless Steel)				
	2					

Applicable Conveyors: SVKA, SVKB

Ordering Example: Part Number - Roller Material - W
 CGNR1 - P - 100

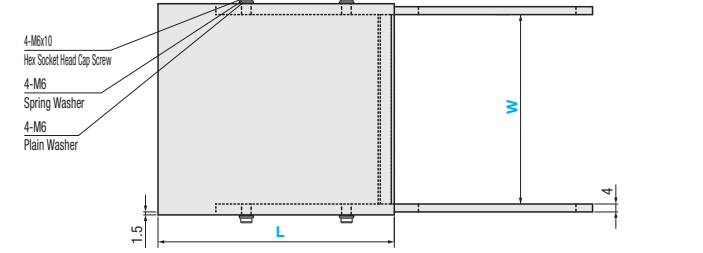
Days to Ship [Configure Online](#)



■ Features: The table to temporarily stock the items carried by the conveyor.

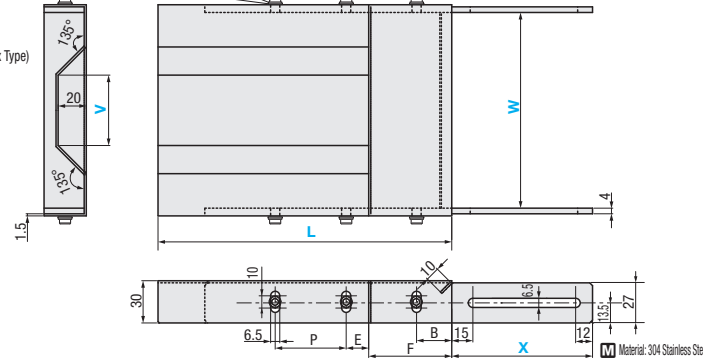


CGST
 (Flat Type)



- 4-M6x10 Hex Socket Head Cap Screw
- 4-M6 Spring Washer
- 4-M6 Plain Washer

CGSW
 (Concave/Convex Type)



- 6-M6x10 Hex Socket Head Cap Screw
- 6-M6 Spring Washer
- 6-M6 Plain Washer

When L ≥ 310, we recommend the alteration YNS (Welding Nut + Leg).

Part Number	W 1mm Increment	L 10mm Increment	X Selection	V Selection	B	E	F	P	Allowable Load (Kgf)	Unit Price	
										CGST	CGSW
Flat Type CGST Concave/Convex Type CGSW	85~150	100~250	100	15	25	20	50	20	15.0		
					50	25	100	100			
					25	20	50	20			
	151~250	260~400		50	50	25	100	150			
					25	20	50	20			
					50	25	100	150			
	251~350	260~400	100	90	25	20	50	20			
				130	50	25	100	150			
				25	20	50	20				
	351~500	100~250	100	100	25	20	50	20			
				260~400	50	25	100	150			
				410~500	25	20	50	20			

V dimension needs to be selected only for CGSW.

Ordering Example: Part Number - W - L - X - V
 CGST - 250 - 300 - 100
 CGSW - 255 - 400 - 150 - 130

Days to Ship [Configure Online](#)

Alterations: Part Number - W - L - X - V - (YN, YNS)
 CGSW - 250 - 300 - 100 - 70 - YNS750

Alterations Code	Welded Nut	Welding Nut + Leg
	YN	YNS
Spec.	M6 nuts are added (welded) on both ends of the table side. This will enhance versatility of mounting. Application conditions are: CGST: L-(B+P+15) ≥ 70 CGSW: L-(F+E+P+15) ≥ 70	Legs to support load are added. Configurable when W ≥ 151. 200 ≤ YNS ≤ 1200 Assembly by customers required (shipped unassembled). Application conditions are: CGST: L-(B+P+15) ≥ 70 CGSW: L-(F+E+P+15) ≥ 70 Ordering Code: YNS800 Specification Range: 200~1200 (10mm Increment) Accessories: Hex Socket Head Cap Screw x 2 pcs.

Example

