



Conveyor Chute / Angle Adjustment Bracket Single Article

■ **Features:** Chutes with their angle adjustable between 5 to 60 degrees. Plastic type is also available to make the workpiece move smoother and to prevent scratching of the workpiece.

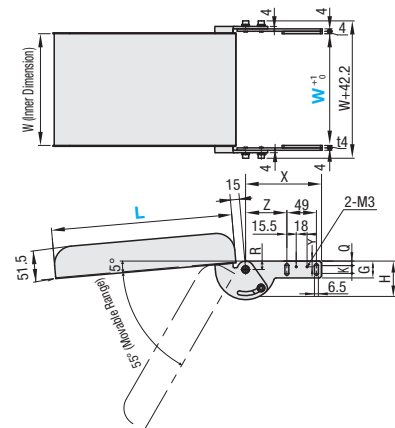
Conveyor Chute



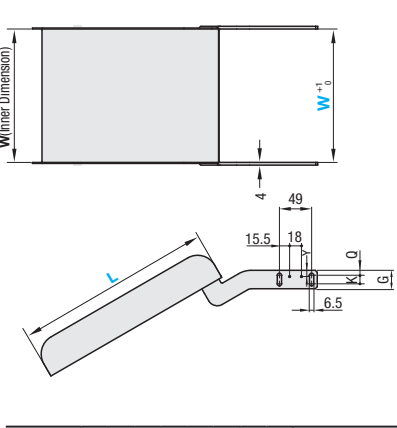
Type		Material	Allowable Load (kgf)	Thickness (t)
Angle Adjustable	30° Angle-Fixed			
CSHWS	CSHYS	304 Stainless Steel	15	1.5
CSHWE	CSHYE	304 Stainless Steel + Stainless Steel Sliding Plate*		1.5 + 0.8 (Sliding Plate Thickness)
CSHWU	CSHYU	304 Stainless Steel + Ultrahigh molecular weight polyethylene		1.5 + 0.25 (Polyethylene Thickness)

* Use FENB0.5 (See P.1187)

Angle Adjustable CSHWS CSHWE CSHWU



30° Angle-Fixed CSHYS CSHYE CSHYU



Applicable Conveyor Type	R	Z	X	K	Q	Y	G	H	Applicable Conveyors
A	14	68.5	126	13	9.5	7.5	28	57.1	SVKN/SVKR/CVGN/CVGP
B	14	98.5	156	13	9.5	7.5	28	57.1	CVGR/CVWG
C	24	83.5	141	30	10	10	48	75	CVSY/CV SX

- ① When L ≥ 310, we recommend the alteration YNS (Welding Nut + Leg).
- ② When mounting to MISUMI conveyors, the W dimensions should be: Belt Width + 40 for Bracket Type A, B; Belt Width + 50 for C.
- ③ We will ship Angle Adjustable Types unassembled. Assembly will be required on your side. The 30° Angle-Fixed Types will be shipped assembled.
- ④ M5/M6 Hex Socket Head Cap Screws and Washers are included for mounting of the conveyor. You will choose either of them and the rest will be left unused.

Angle Adjustable

Part Number	Applicable Conveyors Types	W 1mm Increment	L 10mm Increment	Applicable Conveyors	Conveyor Page
CSHWS	A	90-540		SVKN/SVKR/CVGN/CVGP	P.1201-1204, 1213-1216
CSHWE	B	90-340	70-500	CVGR/CVWG	P.1217-1220
CSHWU	C	150-550		CVSY/CV SX	P.1233-1236

30° Angle-Fixed

Part Number	Applicable Conveyors Types	W 1mm Increment	L 10mm Increment	Applicable Conveyors	Conveyor Page
CSHYS	A	90-540		SVKN/SVKR/CVGN/CVGP	P.1201-1204, 1213-1216
CSHYE	B	90-340	70-500	CVGR/CVWG	P.1217-1220
CSHYU	C	150-550		CVSY/CV SX	P.1233-1236

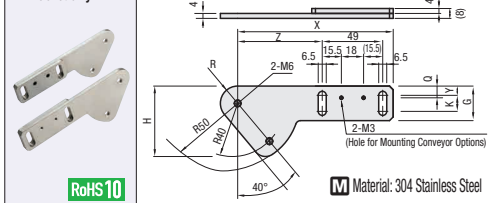
Price [Configure Online](#)

W	L	Unit Price					
		CSHWS	CSHWE	CSHWU	CSHYS	CSHYE	CSHYU
90-200	70-100						
	110-200						
	210-300						
	310-400						
201-300	110-200						
	210-300						
	310-400						
	410-500						
301-400	70-100						
	110-200						
	210-300						
	310-400						
401-550	70-100						
	110-200						
	210-300						
	310-400						

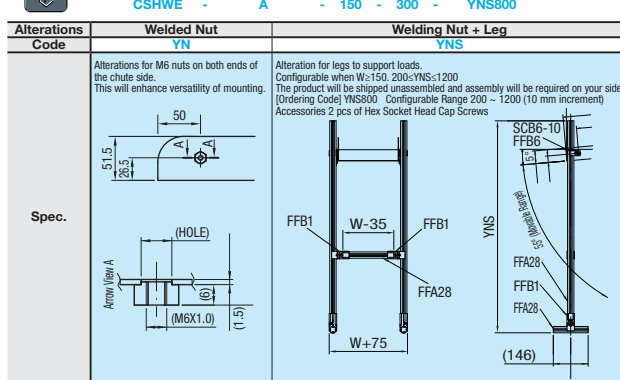
① W is 150~ for the applicable conveyor type C.

Ordering Example: **CSHWE** - **A** - **150** - **300** Days to Ship

For Adjusting Angle Bracket only



Alterations Part Number - Applicable Conveyor Type - W - L - (YNS, YNS)



Ordering Example: **CSHRA** Days to Ship [Configure Online](#)

Part Number	Applicable Conveyors	R	Z	X	K	Q	Y	G	H	Unit Price
A	SVKN/SVKR/CVGN/CVGP	14	68.5	126	13	9.5	7.5	28	57.1	
B	CVGR/CVWG	14	98.5	156	13	9.5	7.5	28	57.1	
C	CVSY/CV SX	24	83.5	141	30	10	10	48	75	

Ordering Example: **CSHRA** Days to Ship [Configure Online](#)

Price [Configure Online](#)

Example



Dust Pans

■ **Features:** The pan receives fallout from the conveyor. Also compatible with liquid including oil.

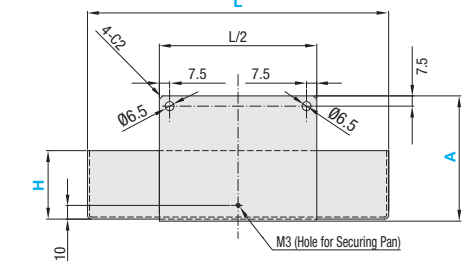
Dust Pans



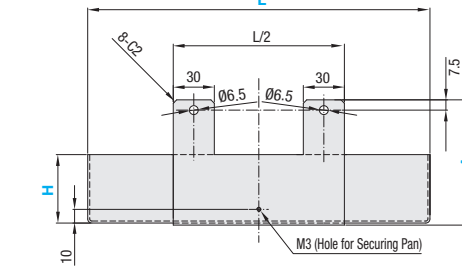
CDPT

Type	Material	Accessories
CDPT	304 Stainless Steel	Hex Socket Head Cap Screw (304 Stainless Steel) Washer (304 Stainless Steel)

When L ≤ 200



When L ≥ 205



① Also compatible with oil or water drops.

Part Number	W 1mm Increment	L 5mm Increment	H 10mm Increment	A 10mm Increment	Unit Price
CDPT	65-100	100-200	20-40	150-200	
		205-300			
		305-400			
	101-200	100-200			
		205-300			
		305-400			
	201-300	100-200			
		205-300			
		305-400			
	301-400	100-200			
		205-300			
		305-400			
401-550	100-200				
	205-300				
	305-400				

[Configure Online](#)

Alterations Part Number - W - L - H - A - (CLU, CDL, CRU, CRD) - CLU2

Alterations	Water/Oil Discharge Socket Welding	Handle Added	Pan Fixing Knob Added
Code	CLU, CLD, CRU, CRD	CDL	CFN
Spec.			

Ordering Example: **CDPT** - **250** - **300** - **20** - **150**

Days to Ship [Configure Online](#)

Example

