



# Conveyor Stands Tube Type

Conveyor Resource Site: <http://www.misumiusa.com/conveyor/>  
Conveyor Selection, Design Your Own Conveyor Kit, & Maintenance Parts Search

Features: Stands of which height is adjustable up to 200 mm. Useful when switching lines.

## Conveyor Stands - Pipe Type

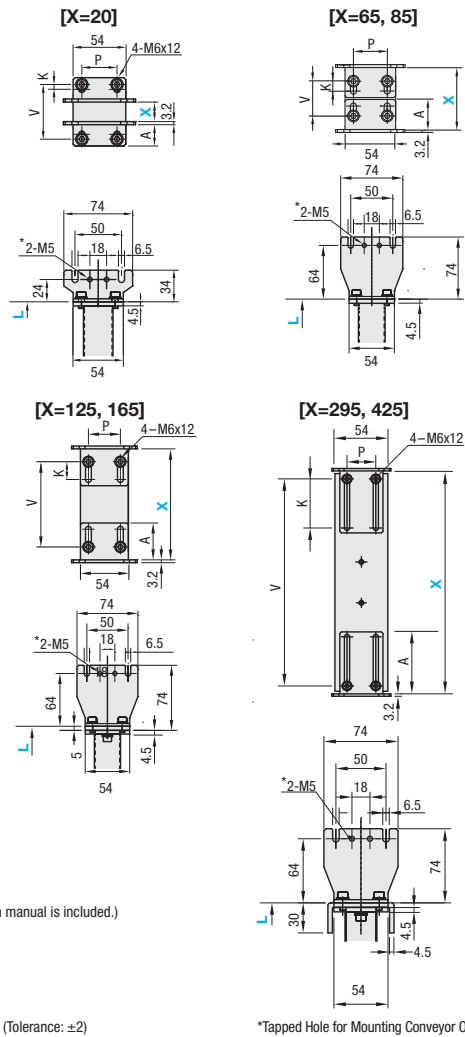


RoHS 10

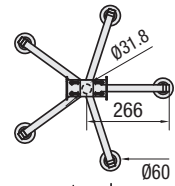
Name	Material	Surface Treatment
① L-Shaped Bracket	Steel	Black Paint
② Intermediate Plate	Steel	Black Paint
③ Bracket Mount	Steel	Black Paint
④ Round Tube	Steel	Black Paint
⑤ Foot Base	Steel	Black Paint
⑥ Foot	Steel	Trivalent Chromate
⑦ Caster	Shaft	Steel
	Wheel	Plastic

## L Type Bracket Detail View

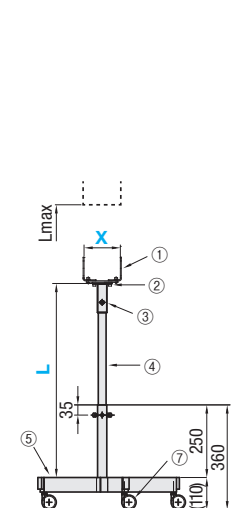
The scale of the drawings correspond with the smaller X value



## CSTPF (Foot Type)



## CSTPC (Caster Type)



- The stands are shipped unassembled. Assembly will be required on your side. (The assembly instruction manual is included.)
- The ③ bracket mount rotates 360°.
- When X = 20 ~ 85, the intermediate plate will not be provided.
- To secure the foot, use Fixing Plates (FKMT12) on PZ-1042.
- For the foot type, heights cannot be finely adjusted using adjusters.
- For the ⑦ caster type, three casters have stoppers.
- The conveyor mount part height is L + 24 + 110 when X = 20 and is L + 64 + 110 when X = 65 ~ 425. (Tolerance: ±2)

Part Number	X	L	Load Capacity (N)	Unit Price	
				CSTPF	CSTPC
CSTP	F (Foot)	20	385	925	
		65	585		
		85	785		
	C (Caster)	125	390		
		165	590		
		295	389		
	425	789			

Infinitely variable adjustment is available for X and L within the adjustable range shown in the right table.

## Maintenance Parts Number

Caster		Foot
No Stopper	With Stopper	
CTYNB50-12 (PZ-1032)	CTYNBS50-12 (PZ-1032)	NFJN12-50

## Note

The product does not have fall-prevention mechanism. Avoid adjusting the stand height when the conveyor is attached. Handle the product with utmost care.

## L Type Bracket Dimension Details

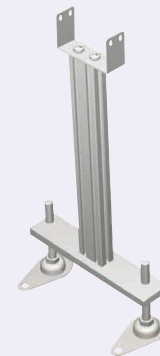
X	A	V	P	K
65	31.5	36	40	10
85	41.5	56	36	20
125		96		
165	82	144	36	65
295		274		
425		404		

Ordering Example: Part Number Type Shape - X - L  
CSTP F - 20 - 785

Days to Ship [Configure Online](#)

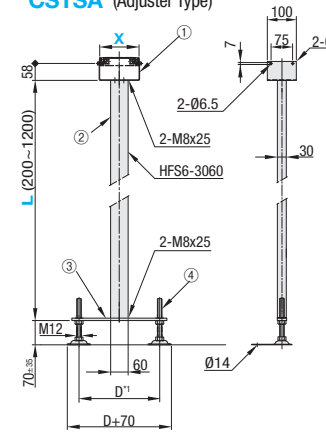
# Conveyor Stands I Type / H Type

## Conveyor Stands - I Type

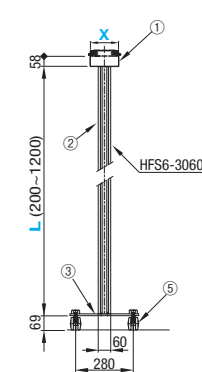


RoHS 10

### Conveyor Stand I Type (1set) CSTSA (Adjuster Type)



### CSTSC (Caster Type)



\*1 D dimension chart

X	50~100	101~200
D	200	280

X is conveyor mounting width

The unit will not stand on its own.

	① Bracket	② Aluminum Extrusion	③ Base Plate	④ Level Adjusting Bolt	⑤ Caster	
Material	304 Stainless Steel	Aluminum	Steel	Steel	Shaft Steel	Wheel Plastic
Surface Treatment	2B	Clear Anodize	Trivalent Chromate	Trivalent Chromate	Trivalent Chromate	-

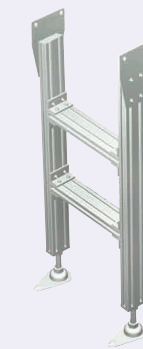
The stands are shipped unassembled. Assembly by customers required.

Part Number	Shape	X 1mm Increment	L 1mm Increment	Unit Price
CSTS	A (Adjuster) C (Caster)	50-200	100-490	
			500-690	
			700-990	
			1000-1200	

Ordering Example: Part Number Type Shape - X - L  
CSTS A - X100 - L800

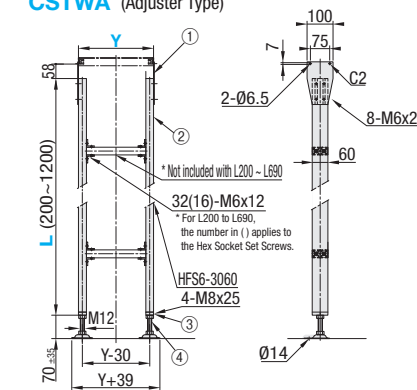
Days to Ship [Configure Online](#)

## Conveyor Stands - H Type

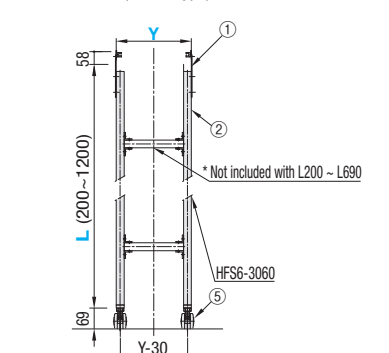


RoHS 10

### Conveyor Stand H Type (1set) CSTWA (Adjuster Type)



### CSTWC (Caster Type)



The unit will not stand on its own.

	① Bracket	② Aluminum Extrusion	③ Foot Base	④ Level Adjusting Bolt	⑤ Caster	
Material	Steel	Aluminum	Steel	Steel	Shaft Steel	Wheel Plastic
Surface Treatment	Trivalent Chromate	Clear Anodize	Trivalent Chromate	Trivalent Chromate	Trivalent Chromate	-

The stands are shipped unassembled. Assembly by customers required.

Part Number	Shape	Y 1mm Increment	L 1mm Increment	Unit Price
CSTW	A (Adjuster) C (Caster)	150-600	100-490	
			500-690	
			700-990	
			1000-1200	

Ordering Example: Part Number Type Shape - Y - L  
CSTW C - Y500 - L1000

Days to Ship [Configure Online](#)