



For Pricing and Days to Ship, Please Configure Online.

# EPT Sealer® Sponge / Opsealer® Sponge

A semi-closed cell foam can be compressed at a small stress, and changes its structure to open cell by compression.

**EPA** (Adhesive)  
**EPAOP** (Adhesive)  
**EPAN** (No Adhesive)

ⓂA≥B

Type	①	②
EPA	EPDM Synthetic Rubber Foam (EPT Sealer®)	Adhesive with Unwoven Cloth Base Material
EPAOP	EPDM Synthetic Rubber Foam (Opsealer®)	Adhesive with Net Base Material

① Adhesive thickness is 0.16mm.

**Accuracy Standards**

T Dimension Tolerance		A, B Dimension Tolerance	
T	Tolerance	A, B	Tolerance
3~10	±1.0	20	±2.0
15~25	±2.0	30~50	±2.5
30	±2.5	60~140	±3.5
		150~290	±6.5
		300~500	±9.0

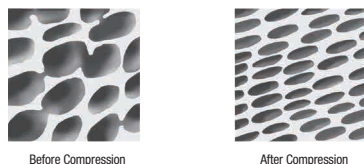
ⓂEPT Sealer® is a registered trademark of Nitto Denko Corporation.  
ⓂOpsealer® is a registered trademark of Sanwa Kako Co., Ltd.

Part Number	10mm Increment		T
	A	B	
<b>EPA</b>			3
<b>EPAOP</b>	20~500	20~400	5
<b>EPAN</b>			8
			10
			15
			20
			25
			30

Ordering Example: **EPA** - 100 - 80 - 8  
**EPAOP** - 200 - 100 - 30  
**EPAN** - 150 - 100 - 10

Days to Ship [Configure Online](#)

· Semi-closed Cell Structure



**Characteristic Values** (The values are not guaranteed but measured ones.)

Measurement Item	EPA	EPAOP
Color	Black	Black
Specific Gravity	0.11	0.08
Tensile Strength (Mpa)	0.08	0.1
Elongation (%)	450	205
Compression Hardness (25%) (kg/cm <sup>2</sup> )	0.03	0.04
Compression Hardness (50%) (kg/cm <sup>2</sup> )	0.05	0.05
Compression Rate (%)	50	-
	60	×
	70	△
	80	○
	90	○

- : No measurement data  
○ : No leakage of water after 30mins.  
△ : Leakage of water is seen within 30mins.  
× : Leakage of water is seen within 10mins.

Price [Configure Online](#)

Part Number	T	A	Unit Price B			
			20~100	110~200	210~300	310~400
<b>EPA</b> (x1.0)	3	20~100	-	-	-	-
		110~200	-	-	-	-
		210~300	-	-	-	-
		310~400	-	-	-	-
		410~500	-	-	-	-
	5	20~100	-	-	-	-
		110~200	-	-	-	-
		210~300	-	-	-	-
		310~400	-	-	-	-
		410~500	-	-	-	-
	8	20~100	-	-	-	-
		110~200	-	-	-	-
		210~300	-	-	-	-
		310~400	-	-	-	-
		410~500	-	-	-	-
10	20~100	-	-	-	-	
	110~200	-	-	-	-	
	210~300	-	-	-	-	
	310~400	-	-	-	-	
	410~500	-	-	-	-	

Part Number	T	A	Unit Price B			
			20~100	110~200	210~300	310~400
<b>EPA</b> (x1.0)	15	20~100	-	-	-	-
		110~200	-	-	-	-
		210~300	-	-	-	-
		310~400	-	-	-	-
		410~500	-	-	-	-
	20	20~100	-	-	-	-
		110~200	-	-	-	-
		210~300	-	-	-	-
		310~400	-	-	-	-
		410~500	-	-	-	-
	25	20~100	-	-	-	-
		110~200	-	-	-	-
		210~300	-	-	-	-
		310~400	-	-	-	-
		410~500	-	-	-	-
30	20~100	-	-	-	-	
	110~200	-	-	-	-	
	210~300	-	-	-	-	
	310~400	-	-	-	-	
	410~500	-	-	-	-	

Part Number	T	A	Unit Price B			
			20~100	110~200	210~300	310~400
<b>EPAOP</b>	3	20~100	-	-	-	-
		110~200	-	-	-	-
		210~300	-	-	-	-
		310~400	-	-	-	-
		410~500	-	-	-	-
	5	20~100	-	-	-	-
		110~200	-	-	-	-
		210~300	-	-	-	-
		310~400	-	-	-	-
		410~500	-	-	-	-
	8	20~100	-	-	-	-
		110~200	-	-	-	-
		210~300	-	-	-	-
		310~400	-	-	-	-
		410~500	-	-	-	-
10	20~100	-	-	-	-	
	110~200	-	-	-	-	
	210~300	-	-	-	-	
	310~400	-	-	-	-	
	410~500	-	-	-	-	

Part Number	T	A	Unit Price B			
			20~100	110~200	210~300	310~400
<b>EPAOP</b>	15	20~100	-	-	-	-
		110~200	-	-	-	-
		210~300	-	-	-	-
		310~400	-	-	-	-
		410~500	-	-	-	-
	20	20~100	-	-	-	-
		110~200	-	-	-	-
		210~300	-	-	-	-
		310~400	-	-	-	-
		410~500	-	-	-	-
	25	20~100	-	-	-	-
		110~200	-	-	-	-
		210~300	-	-	-	-
		310~400	-	-	-	-
		410~500	-	-	-	-
30	20~100	-	-	-	-	
	110~200	-	-	-	-	
	210~300	-	-	-	-	
	310~400	-	-	-	-	
	410~500	-	-	-	-	

# Special Foam Polyurethane SOFRAS®

Sheet Type / Rolled Type

This special urethane foam has good water retention and wear resistance allowing it to be used in industrial purposes such as application and moisture absorption.

**Sheet Type**

Type	Material	Hardness	Color
No Adhesive <b>SOFRAS</b>	Special Foam Polyurethane SOFRAS®	Asker C11	White
Adhesive <b>SOFRASA</b>	Special Foam Polyurethane SOFRAS®	Asker C11	White

ⓂSOFRAS® is a registered trademark of AION Co., Ltd.

(No Adhesive)

(Adhesive)

ⓂAdhesive thickness is 0.06~0.10mm.

Part Number	5mm Increment		T
	A	B	
No Adhesive <b>SOFRAS</b>	10~480	10~270	5
Adhesive <b>SOFRASA</b>	20~480	20~270	10
			15
			20

Ordering Example: **SOFRAS** - 300 - 200 - 10

Days to Ship [Configure Online](#)

Price [Configure Online](#)

**Adhesive Charge**

A	B	
	10~100	105~200
10~100	-	-
105~200	-	-
205~300	-	-
305~400	-	-
405~480	-	-

Type	T	A	Unit Price B		
			10~100	105~200	205~270
No Adhesive <b>SOFRAS</b>	5	10~100	-	-	-
		105~200	-	-	-
		205~300	-	-	-
		305~400	-	-	-
		405~480	-	-	-
Adhesive <b>SOFRASA</b>	10	10~100	-	-	-
		105~200	-	-	-
		205~300	-	-	-
		305~400	-	-	-
		405~480	-	-	-

Type	T	A	Unit Price B		
			20~100	105~200	205~270
No Adhesive <b>SOFRAS</b>	15	20~100	-	-	-
		105~200	-	-	-
		205~300	-	-	-
		305~400	-	-	-
		405~480	-	-	-
Adhesive <b>SOFRASA</b>	20	20~100	-	-	-
		105~200	-	-	-
		205~300	-	-	-
		305~400	-	-	-
		405~480	-	-	-

**Roll Type**

Type	Material	Hardness	Color
Hollow Roll (Sponge only) <b>SOFRASR</b>	Sponge: Special Foam Polyurethane SOFRAS® Resin Roll: Polypropylene (PP)	Asker C7	White
With Resin Roll <b>SOFRASRP</b>	Sponge: Special Foam Polyurethane SOFRAS® Resin Roll: Polypropylene (PP)	Asker C7	White

Hollow Roll (Sponge only) Tolerance D, V ±2      With Resin Roll Tolerance D±2 V±1

Type	Part Number	D	5mm Increment L	V	t
Hollow Roll (Sponge only)	<b>SOFRASR</b>	40	30~600	22	9
With Resin Roll	<b>SOFRASRP</b>	40	30~600	16	9

Ordering Example: **SOFRASRP** - 40 - 200

Days to Ship [Configure Online](#)

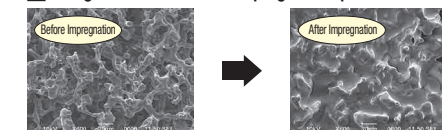
Type	Part Number	D	Unit Price L (5mm Increment)					
			30~100	101~200	201~300	301~400	401~500	501~600
Hollow Roll (Sponge only)	<b>SOFRASR</b>	40						
With Resin Roll	<b>SOFRASRP</b>	40						

Price [Configure Online](#)

**Enlarged Photo**



**Enlarged Photo of Grease-impregnated Special Urethane**



**Material Properties**

Material	Continuous		Lamination	Semi-closed	Independent
	SOFRAS®	Urethane Foam	Felt	EPT Sealer®	CR, EPDM Synthetic Rubber, NBR, Nitrile Rubber, Silicon, Fluorine
Page	P426	P421	P427	P425	P421
Application Example	Application and Moisture Absorption			Dust-proof and Protection	
Apparent Density	g/cm <sup>3</sup> 0.2	0.02	0.2	-	0.1~0.3
Tensile Strength	kPa 1000	76	-	-	-
Water Retention Rate	% 400	-	80	-	-
Heat Resistant	°C 130	70	120	-	130~200
Water Retention	○	○	○	△	×
Abrasion Resistant	○	×	×	×	○
Water Resistance	○	△	○	×	○
Chemical Resistance	○	×	△	×	×

