

Micro Spring Pins / Stroke Pins

Feature: Suited for soldering or bonding electronic parts on a circuit board.

Micro Spring Pins RoHS10

Type	① Pin End	② Pin	③ Spring	④ Sleeve	⑤ Collar
	M Material	H Hardness	S Surface Treatment	M Material	S Surface Treatment
JJPPN	Polyacetal	SK	Heat Treated Hardness HV620-720 Electroless Nickel Plating Nickel Plating	304 Stainless Steel	SK Electroless Nickel Plating Nickel Plating

Stroke should not exceed S dimension, otherwise the spring may be damaged.
Tighten the nut with forces under 23.43N for M2, 98.07N for M3-5.

Part Number Type	M	D	Stroke S	H	m	B	L1	T	L	t	(d)	d1	(L2)	Load (N)		Unit Price
														min.	max.	
JJPPN	2 (Fine Thread)	1.5	8	2.5	2	3.5	14	0.5	9	0.8	1.7	1	4.2	0.20	0.883	
	3 (Coarse Thread)	2.5		3.5							2.25	1.72		0.39		
	4 (Coarse Thread)	3.5	11	4.5	2.5	6	19	1	15	1	3	2.45	7	0.76	3.432	
	5 (Coarse Thread)	4.5		5.5							4	3.45		1.25		

Ordering Example: Part Number - D
JJPPN4 - 3.5

Days to Ship: Configure Online

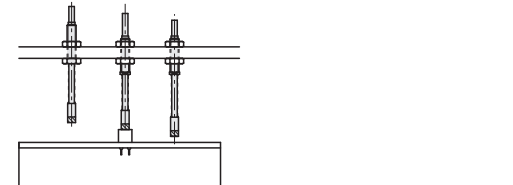
Price: Configure Online

Alterations Example: Part Number - D - (NT)
JJPPN2 - 1.5 - NT1

Nuts Included

Code: NT

Spec: One nut is included with NT1, 2 nuts with NT2.
(Ordering Code) NT1 (Applicable to M2 only)



Feature: Plunger with built-in bushing. The tip can be ordered separately.

Stroke Pins RoHS10

Type	① Pin End	② Pin	③ Spring	④ Shim	⑤ Body	⑥ Oil Free Bushing	⑦ Nut	End Tip
	M Material	M Material	M Material	M Material	M Material	M Material	M Material	Type
SPPL	Polyacetal	304 Stainless Steel	304 Stainless Steel	304 Stainless Steel	304 Stainless Steel	1045 Carbon Steel	Electroless Nickel Plating Nickel Plating	PTFE

Stroke Pins
SPPL

The rear nut is swaged, it cannot be removed.

Pin Tip
SPPHA

Can be used as a replacement stroke pin.

Part Number Type	M (Coarse)	D	Stroke S	H	H1	B	L1	L	t	d1	d2	Load (N)		Unit Price	Volume Discount Rate
												min.	max.		
SPPL	6	5	10	8	7	14	27.5	20	(1.2)	2.5	2	2.0	5.9		
	8	6		9	8		28.5	26.5	(1.6)	3	2.5	3.8	8.0		
	10	8	15	12	10	15	39.5	31.5	(1.8)	4	3	4.7	12.6		

Part Number Type	Applicable Stroke Pin	ℓ	W	MxPitch (Coarse)	Unit Price	Volume Discount Rate
SPPHA	5 SPPL6-5	5	4	M2.5x0.45	1-9 pc(s)	10-49 pcs.
	6 SPPL8-6	5	5	M3x0.5		
	8 SPPL10-8	6	7	M4x0.7		

Ordering Example: Part Number - D
SPPL6 - 5

Days to Ship: Configure Online

M	Allowable Tightening Torque (N·m)
6	3.5
8	9
10	20

Do not exceed the torque values shown above when tightening.

kgf-Nx0.101972 For orders larger than indicated quantity, please request a quotation.

Example: SPPL, Workpiece, Air Blow, Suction

<Example of Temporary Holding for Dust Removal Process>

Spring Plungers / Long Sleeve Plungers

Tapped Tip

Feature: Stop Pins (P.1455) or Urethane Pushers (P.2-1445) can be mounted on the tip.

Spring Plungers - Tapped Tip RoHS10

Type	Body	Pin	Spring	Operating Temperature
	M Material	H Hardness	S Surface Treatment	M Material
Light Load	PJLTP	1045 Carbon Steel	29-35HRC	Black Oxide
Heavy Load	PJHTP	1045 Carbon Steel	57-63HRC (Carburized)	Electroless Nickel Plating Black Oxide

Part Number Type	M (Coarse)	Stroke S	d	L	L1	M1 (Coarse)	L2	W	T	B	Light Load Load (N)		Heavy Load Load (N)		Unit Price
											min.	max.	min.	max.	
PJLTP PJHTP	12	15	5.5	51	35	M3	6	4	4	4	2.9	19.6	4.9	49.0	
		20									3.5	19.6	6.9	49.0	
	16	15	8	60	35	M4	8	7	5	5	3.9	39.2	12.7	78.5	
		20									4.9	39.2	9.8	78.5	
	20	15	10	72	45	M5	10	8	6	6	2.9	39.2	6.9	78.5	
		20									12.7	78.5	24.5	147.1	
	30		96	45							11.7	78.5	22.6	147.1	

Ordering Example: Part Number - S
PJLTP - 20
PJHTP - 15

Days to Ship: Configure Online

Price: Configure Online

kgf-Nx0.101972

Feature: As a long pin-guide is used, the structure of this plunger is strong enough to bear the diagonal load.

Long Sleeve Plungers RoHS10

Type	Pin	Main Body	Bushing	Spring
	M Material	H Hardness	S Surface Treatment	M Material
GLPN	1045 Carbon Steel	HRC50-55	Black Oxide	1045 Carbon Steel

Part Number Type	d	Stroke S	R	D	L	H	T	ℓ	C	d1	P.C.D	Load (N)		Unit Price
												min.	max.	
GLPN	6	5	4	14	32	30	8	5	1	4.5	22	18	29	
		10										8	29	
	8	5	5	16	38	32	8	8	1.5	5.5	30	22	30	
		10										14	30	
	10	10	6	20	48	40	10	10	2	6.5	40	26	47	
		15										15	47	
	12	15	8	22	52	42	10	10	2	6.5	40	27	48	
		20										20	48	
	16	15	10	28	60	52	10	10	2	6.5	40	42	73	
		25										22	73	
	20	20	12	32	70	56	10	10	2	6.5	44	48	86	
		30										30	86	

Ordering Example: Part Number - S
GLPN8 - 10
GLPN16 - 25

Days to Ship: Configure Online

Price: Configure Online

kgf-Nx0.101972 For orders larger than indicated quantity, please request a quotation.

Long Sleeve Plungers