

# Threaded Stopper Blocks

L-Shaped / T-Shaped / Side Counterbored / Two-Hole

## L-Shaped Type

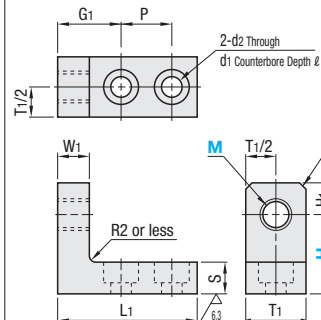


RoHS

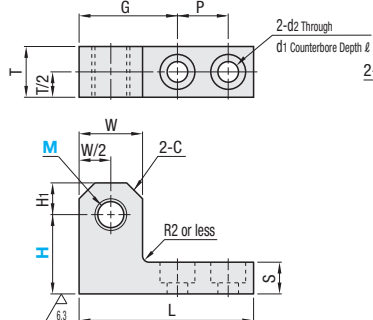
Type		Material	Surface Treatment
Lengthways Adjustable Type	Bottom Mounting Type*		
Coarse Thread	Fine Thread	Coarse Thread	Fine Thread
AJLTT	AJLSTT	AJLCTY	AJLNM
AJLTTM	AJLSTTM	AJLCTYM	AJLNS
AJLTS	-	-	AJLSS

\*1018 Carbon Steel for Bottom Mounting Type

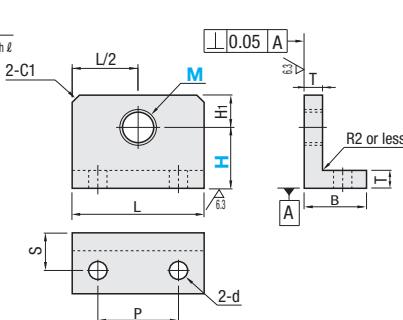
### Lengthways Adjustable Type



### Widthways Adjustable Type



### Bottom Mounting Type



## Lengthways Adjustable Type

Part Number	Type	M	H	H1	T1	MxPitch		W1	L1	S	P	G1	d1	d2	ℓ	Unit Price		
						Coarse Thread	Fine Thread									AJLTT	AJLTTM	AJLTS
(Coarse) AJLTT AJLTTM AJLTS	3	15	20	4	9	3x0.5	3x0.35	5	25	6	10	10	6.5	3.5	3.5			
	4	15	20	4	9	4x0.7	4x0.5											
	5	15	20	6	12	5x0.8	5x0.5	8	32	8	10	15	8	4.5	4.5			
	6	15	20	6	12	6x1.0	6x0.75											
	8	15	20	6	12	8x1.25	8x0.75											
(Fine) AJLSTT AJLSTTM	10	25	30	10	22	10x1.5	10x1.0	10	44	10	16	20	11	6.5	6.5			
	12	25	30	10	22	12x1.75	12x1.0											
	16	25	30	15	30	16x2.0	16x1.5	15	65	15	30	25	14	9	9			
	20	25	30	15	30	20x2.5	20x1.5											

## Widthways Adjustable Type

Part Number	Type	M	H	H1	T	MxPitch		L	W	S	C	P	G	d1	d2	ℓ	Unit Price	
						Coarse Thread	Fine Thread										AJLCTY	AJLCTYM
(Coarse) AJLCTY AJLCTYM	3	10	15	4	9	3x0.5	3x0.35	28	8	6	2	10	13	6.5	3.5	3.5		
	4	10	15	4	9	4x0.7	4x0.5											
	5	15	20	6	10	5x0.8	5x0.5	32	10	8	2	10	17	8	4.5	4.5		
	6	15	20	6	10	6x1.0	6x0.75											
	8	15	20	6	10	8x1.25	8x0.75											
	10	15	20	6	10	10x1.5	10x1.0											
(Fine)	12	20	25	10	16	12x1.75	12x1.0	55	20	10	5	16	31	11	6.5	6.5		
	16	20	25	15	19	16x2.0	16x1.5	75	30	15	7	20	45	14	9	9		
	20	20	25	15	19	20x2.5	20x1.5											
	20	20	25	15	19	20x2.5	20x1.5											

## Bottom Mounting Type

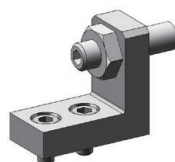
Part Number	Type	M	H	H1	T	MxPitch		L	B	P	S	d	Unit Price		
						Coarse Thread	Fine Thread						AJLNM	AJLNS	AJLSS
(Coarse) AJLNM AJLNS	3	15	20	10	6	3x0.5	3x0.35	30	20	14	12	4.5			
	4	15	20	10	6	4x0.7	4x0.5								
	5	15	20	10	6	5x0.8	5x0.5								
	6	15	20	10	6	6x1.0	6x0.75								
	8	15	20	10	6	8x1.25	8x0.75								
(Fine) AJLSS	10	25	30	15	10	10x1.5	10x1.0	40	30	20	20	6.5			
	12	25	30	15	10	12x1.75	12x1.0								
	16	25	30	20	15	16x2.0	16x1.5	60	40	30	27.5	9			
	20	25	30	20	15	20x2.5	20x1.5								

\*T dimension of AJLNS and AJLSS (Material: Stainless Steel) is shown in (.). M16 and M20 are not available.

Ordering Example: Part Number - H  
AJLTT5 - 15

Example: The combination of parts as illustrated can be selected over Web. Details about Selection Procedure P81 e-Catalog Search Key #MA24 Search

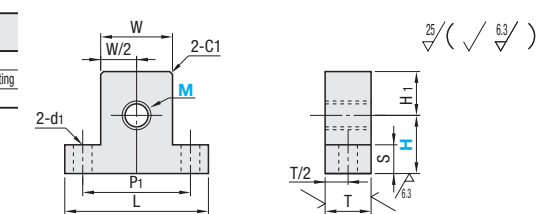
\* If a search key is inputted in e-Catalog Search BOX, the search result is shown on the right side of the screen. \*Modular Assembler\* area.



## T-Shaped Type



Type		Material	Surface Treatment
Coarse Thread	Fine Thread		
AJTN	AJTS	1018 Carbon Steel	Black Oxide
AJTNM	AJTSM	304 Stainless Steel	Electroless Nickel Plating
AJTNS	AJTSS	304 Stainless Steel	-

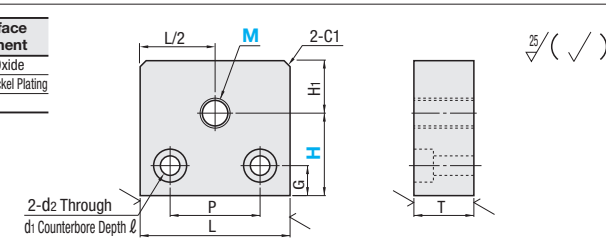


Part Number	Type	M	H	H1	T	MxPitch		L	W	P1	d1	S	Unit Price		
						Coarse Thread	Fine Thread						AJTN	AJTSM	AJTNS
(Coarse) AJTN AJTNM AJTNS	3	15	20	10	10	3x0.5	3x0.35	32	16	24	4.5	5			
	4	15	20	10	10	4x0.7	4x0.5								
	5	15	20	10	10	5x0.8	5x0.5								
	6	20	25	15	16	6x1.0	6x0.75								
	8	20	25	15	16	8x1.25	8x0.75								
(Fine) AJTS AJTSM AJTSS	10	20	25	20	22	10x1.5	10x1.0	50	25	38	6.5	10			
	12	20	25	20	22	12x1.75	12x1.0								
	16	25	30	20	22	16x2.0	16x1.5	75	40	57	9	15			
	20	25	30	20	22	20x2.5	20x1.5								

## Side Counterbored Type



Type		Material	Surface Treatment
Coarse Thread	Fine Thread		
AJFN	AJFS	1018 Carbon Steel	Black Oxide
AJFNM	AJFSM	304 Stainless Steel	Electroless Nickel Plating
AJFNS	AJFSS	304 Stainless Steel	-



Part Number	Type	M	H	H1	T	MxPitch		L	P	d1	d2	ℓ	G	Unit Price		
						Coarse Thread	Fine Thread							AJFN	AJFSM	AJFNS
(Coarse) AJFN AJFNM AJFNS	3	20	25	10	10	3x0.5	3x0.35	32	20	8	4.5	4.5	5			
	4	20	25	10	10	4x0.7	4x0.5									
	5	20	25	10	10	5x0.8	5x0.5									
	6	20	25	10	10	6x1.0	6x0.75									
	8	20	25	10	10	8x1.25	8x0.75									
	10	20	25	10	10	10x1.5	10x1.0	44 (50)	28	11	6.5	6.5	9			
(Fine) AJFS AJFSM AJFSS	12	20	25	15	16	12x1.75	12x1.0									
	16	20	25	15	16	16x2.0	16x1.5	60 (65)	42	14	9	9	12			
	20	20	25	15	16	20x2.5	20x1.5									
	20	20	25	15	16	20x2.5	20x1.5									

\*L dimension of AJFNS and AJFSS (Material: Stainless Steel) is shown in (.).

Ordering Example: Part Number - H  
AJTN8 - 25  
AJTNS - 20

Configure Online

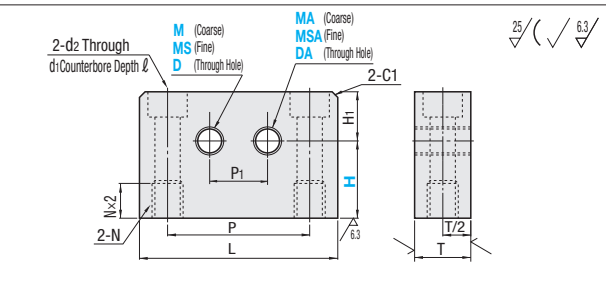
Configure Online

## Two-Hole Type



Type	Material	Surface Treatment
AJWB	1018 Carbon Steel	Black Oxide
AJWM	304 Stainless Steel	Electroless Nickel Plating
AJWS	304 Stainless Steel	-

MxPitch		MxPitch	
Coarse Thread	Fine Thread	Coarse Thread	Fine Thread
3x0.5	3x0.35	10x1.5	10x1.0
4x0.7	4x0.5	12x1.75	12x1.0
5x0.8	5x0.5	14x1.5	-
6x1.0	6x0.75	16x2.0	16x1.5
8x1.25	8x0.75	20x2.5	20x1.5



Part Number	Type	No.	M, MS, D			MA, MSA, DA			H	H1	T	L	P	P1	d1	d2	ℓ	N	Unit Price		
			AJWB	AJWM	AJWS																
AJWB AJWM AJWS	1	3 4 5 6	3	4	5	6	8	10	12	15	20	25	15	12	54	42	20	9.5	5.5	5.5	M6
	2	8 10 12 (14)	8	10	12	16	20	25	30	20	25	30	20	16	74	60	28	11	6.5	6.5	M8
	3	16 20	16	20	20	25	30	40	20	22	86	70	34	14	9	9	9	M10			

\* (14) is for MS (Fine Thread) only.

Ordering Example: Part Number - M, MS, D - MA, MSA, DA - H  
AJWM2 - M8 - MSA12 - H30

Configure Online

Configure Online

