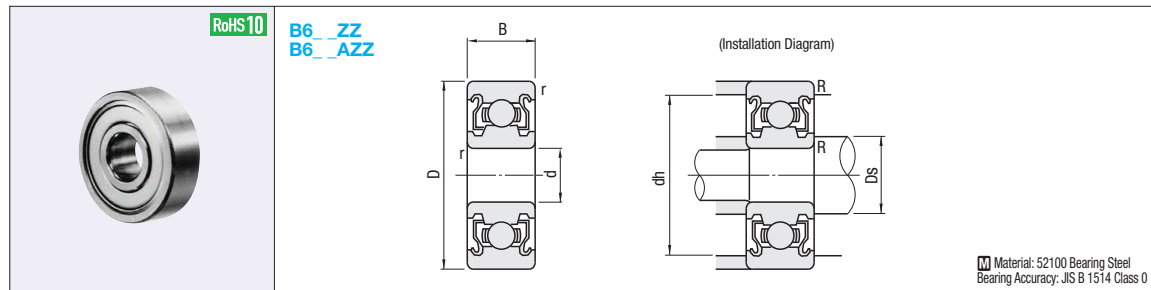


Small Deep Groove Ball Bearings

Double Shielded



Part Number	d	D	B	r (min)	Basic Load Rating		Allowable Rotational Speed rpm (Reference)	Relative Dimensions			Mass (g) (Reference)	Unit Price		
					Cr (Dynamic) N	Cor (Static) N		Ds (min)	dh (max)	R (max)				
B682ZZ	2	5	2.3	0.08	169	50	85000	2.7	3.9	0.08	0.17			
B692ZZ		6	3.0	0.15	330	98	75000	3.0	4.8	0.15	0.38			
B602ZZ		7	3.5		385	127	60000	3.2	5.8		0.58			
B682AZZ	2.5	6	2.6	0.08	208	74	71000	3.7	4.9	0.08	0.29			
B692AZZ		7	3.5	0.15	385	127	63000	3.85	5.65	0.15	0.55			
B673ZZ		6	2.5	0.1	208	74	71000	3.6	5.4	0.08	0.2			
B683ZZ	7	3	390		130	63000	3.9	5.8	0.1	0.45				
B693ZZ	3	8	4	0.15	560	179	60000	4.2	7.8	0.15	0.83			
B603ZZ		9	5		570	187	56000				8.8	1.66		
B623ZZ		10	4	630	218	50000	11.4	0.2	3.33					
B633ZZ	4	13	5	0.2	1300	485	40000	4.6	6.4	0.08	0.29			
B674ZZ		7	2.5	0.1	222	88	60000	5.0	7.8	0.1	1.01			
B684ZZ		9	4		640	224	53000	5.2	9.8	0.15	1.75			
B694ZZ	11	0.15		715	276	48000	5.6	10.4	0.2	2.29				
B604ZZ	12		957	350	1300		485	40000		6	14	0.3	5.21	
B624ZZ	13		1300	485	40000		7.4	0.1		0.34				
B634ZZ	5	16	5	0.3	1340	523	36000	6.2	9.8	0.1	0.68			
B675ZZ		8	2.5	0.1	218	131	53000	5.8	7.4	0.1	0.34			
B685ZZ		11	5	0.15	715	281	45000	6.2	9.8	0.1	0.68			
B695ZZ	5	13	4	0.2	1080	430	43000	6.6	11.4	0.2	2.5			
B605ZZ		14	5		1330	505	40000	7	14		0.3	4.86		
B625ZZ		16		1730	670	36000	17	0.3	8.34					
B635ZZ	6	19	6	0.3	2336	835	32000	7.04	9.3	0.1	0.68			
B676ZZ		10	3	0.1	495	218	45000	7.0	11.8	0.15	2.69			
B686ZZ		13	5	0.15	1080	440	40000	7.6	13.4	0.2	3.72			
B696ZZ	15	1350		530	2190	835		38000	8		17	0.3	7.94	
B606ZZ	6	17	6	0.3	2190	835	38000	8	17	0.3	7.94			
B626ZZ		19			2340	885	32000	20	14.5					
B636ZZ		22	7	3333	1423	30000	9.05	11.33	0.1	0.97				
B678ZZ	8	12	3.5	0.1	543	274	40000	9.6	14.4	0.2	4.02			
B688ZZ		16	5	0.2	1610	710	36000	10	17	0.3	7.18			
B698ZZ		19	6	1990	865	34000	20	12						
B608ZZ	8	22	7	0.3	3350	1400	34000	22	17	0.3	17			
B628ZZ		24	8		4000	1590	28000	26	30.3					
B638ZZ		28	9	4563	1983									

kgf=Nx0.101972

Ordering Example Part Number B626ZZ

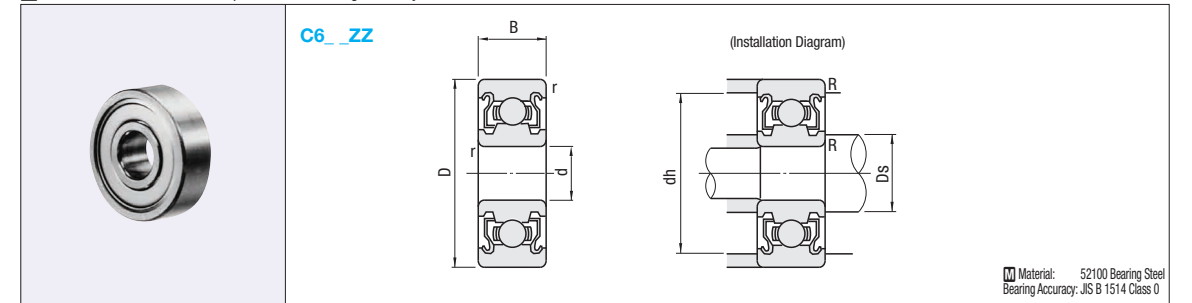
Price Configure Online

Days to Ship Configure Online

Small Deep Groove Ball Bearings (Economy)

Double Shielded

Feature: Economical Small Deep Groove Ball Bearings made by overseas manufacturers.



Part Number	d	D	B	r (min)	Basic Load Rating		Allowable Rotational Speed rpm (Reference)	Relative Dimensions			Mass (g) (Reference)	Unit Price
					Cr (Dynamic) N	Cor (Static) N		Ds (min)	dh (max)	R (max)		
C693ZZ	3	8	4	0.15	560	180	54000	4.2	6.8	0.15	0.61	
C694ZZ	4	11	4		715	276	45000	5.2	9.8		2	
C624ZZ		13		5	1310	490	42000	5.6	11.4	0.2	3.5	
C685ZZ	5	11	5		715	282	43000	6.2	9.8	0.15	1.1	
C695ZZ		13		4	1080	430	40000	6.6	11.4	0.2	2.4	
C625ZZ	6	16	5	0.3	1760	680	37000	7	14	0.3	4.8	
C686ZZ		13		5	1080	440	39000	11.8	0.15		1.9	
C696ZZ	6	15	6	0.2	1350	530	37000	7.6	13.4	0.2	3.8	
C606ZZ		17		6	2190	865	35000	8	15		0.3	6
C626ZZ	8	19	8	0.3	2340	885	34000	9.6	14.4	0.2		3.1
C688ZZ		16			5	1610	715	35000	17		7.3	
C698ZZ	8	19	6	0.3	1990	865	33000	10	20	0.3	12	
C608ZZ		22			7	3300	1370	32000	22		17	
C628ZZ	24	8	4000	1590	31000	22	17					

kgf=Nx0.101972

Ordering Example Part Number C608ZZ

Price Configure Online

Days to Ship Configure Online

<Why Economy Type is recommended>

Economy Type is also in high quality.

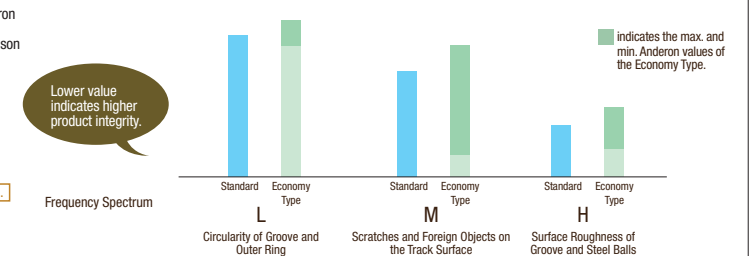
Causes for bearing problems can be detected by performing Anderson Inspection. Economy Type shows equivalent actual Anderson values in comparison with our Standard products.

What is Anderson Inspection?

This inspection measures the bearing's rotational vibrations in (L, H, M) frequency spectra to determine the bearing's performance. The inspection is used on the finished bearings, serving the purpose of removing bearing initial defects.

MISUMI's Economy Type Bearings are all subject to Anderson Inspection.

Anderson Value Comparison of Current MISUMI Standard Products and Current Economy Type



For details of Economy Type, see P873