

Strut Clamps – Perpendicular Configuration, Different Diameter Shaft Holes–

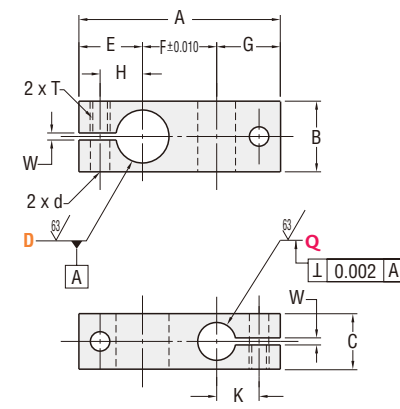
This type of Clamp is designed to join two shafts of different size at a 90 degree angle. Available in low carbon 1018 steel, 6061-T6 aluminum and 304 Stainless Steel. Smaller sizes have only one clamping bolt, while the large sizes have two. Clamping hardware included.



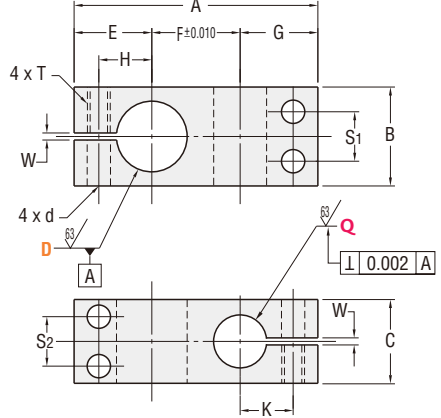
Material	Surface Treatment	Included Hardware	Type
1018 Steel	Black Oxide	S.H.C.S.	U-KLSTN
	Electroless Nickel Plating		U-MLSTN
6061-T6 Aluminum	Clear Anodizing		U-ALKWN
	Black Anodizing		U-ALKLN
304 Stainless Steel	-	U-SLKLN	

Material Characteristics P.628, 629

D0.38-0.50



D0.63-1.50



General Tolerance
Unless otherwise specified use the table below.

From	To	Tolerance
0.000	5.000	+0.01
5.001	16.000	+0.02
16.001	60.000	+0.05

Thread or hole location tolerance: ±0.005' non-cumulative.

Surface Roughness: Unless otherwise specified 250

Type	Part No.		Q		A	B	C	E	F	G	H	K	S1	S2	T (Thread)		d	W
	D		Callout	Nominal											Size	Major Dia.		
	Callout	Nominal																
U-KLSTN U-MLSTN U-ALKWN U-ALKLN U-SLKLN	0.38	3/8	0.25	1/4	1.56	0.563	0.406	0.531	0.563	0.469	0.328	0.266	-	-	#8-32	0.164	0.180	0.078
	0.50	1/2	0.38	3/8	1.88	0.750	0.563	0.625	0.688	0.563	0.406	0.344	-	-	#10-32	0.190	0.206	0.078
	0.63	5/8	0.50	1/2	2.19	0.938	0.750	0.750	0.813	0.625	0.500	0.406	0.438	0.344	#10-32	0.190	0.206	0.078
	0.75	3/4	0.63	5/8	2.56	1.125	0.938	0.875	0.938	0.750	0.594	0.500	0.563	0.438	1/4-20	0.250	0.281	0.078
	1.00	1"	0.75	3/4	3.13	1.375	1.063	1.000	1.250	0.875	0.719	0.594	0.750	0.563	1/4-20	0.250	0.281	0.078
	1.50	1-1/2"	1.00	1"	4.13	1.938	1.375	1.375	1.625	1.125	1.000	0.750	1.000	0.688	5/16-18	0.313	0.344	0.118

Order Example The part number consists only of the fields with blue characters. Please refer to the table in the next page for technical information.

Part No. Type
U-KLSTN 0.63 – Q 0.50

D and Q tolerance and perpendicularity are verified before the slit machining process. Due to possible internal spring force this product may require higher clamping torque.

Technical Information

D, Q Dimensions			
Callout	Nominal	Tolerance	
0.25	1/4	0.2506	0.2500
0.38	3/8	0.3756	0.3750
0.50	1/2	0.5007	0.5000
0.63	5/8	0.6257	0.6250
0.75	3/4	0.7508	0.7500
1.00	1"	1.0008	1.0000
1.50	1-1/2"	1.5010	1.5000

Days to Ship **1** Day

Price

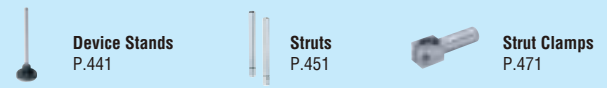
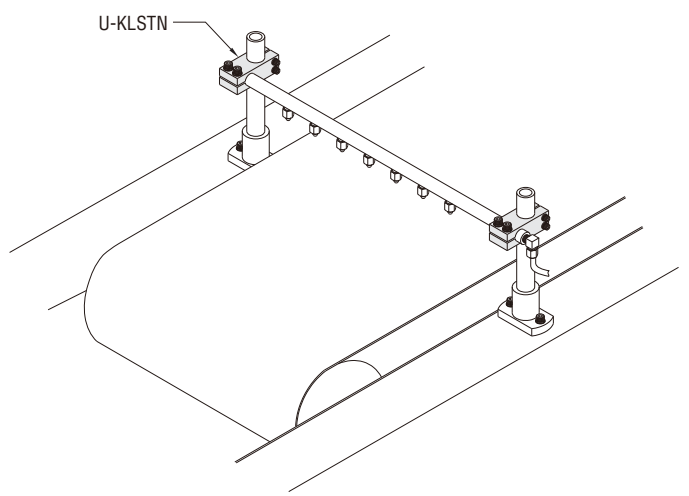
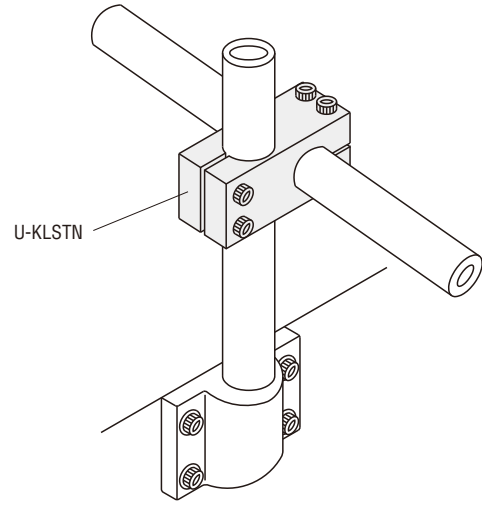
Quantity Discount Rate

Quantity Rate	1	2-4	5-19	20-
Rate	—	2%	3%	5%

For larger quantity orders "Days to Ship" may differ from published catalog term. P.29

D	\$ Unit Price				
	U-KLSTN	U-MLSTN	U-ALKWN	U-ALKLN	U-SLKLN
0.38	19.70	21.70	21.70	21.70	29.60
0.50	23.00	25.60	25.60	25.60	34.80
0.63	27.40	30.40	30.40	30.40	41.40
0.75	32.90	36.50	36.50	36.50	49.70
1.00	39.80	44.20	44.20	44.20	60.10
1.50	61.30	67.80	67.80	67.80	83.00

ex Example



- Contents
- How to Use the Catalog
- Linear Motion
- Linear Shafts
- Bushings
- Shaft Supports
- Shaft Collars
- Linear Guides
- Rotary Motion
- Rotary Shafts
- Bearings w/ Housings
- Pulleys
- Belts
- Couplings
- Locating Components
- Locating Pins & Bushings
- Locating Components
- General Components
- Pivot Pins
- Floating Joints
- Posts
- Device Stands
- Strut Clamps
- Angle Plates
- Gussets
- Welded Stands
- Washers
- Collars
- Manifolds
- Urethanes
- Rubbers
- Plates
- Misc.
- Technical Data
- Business Information
- Index