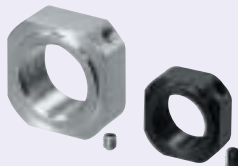


Bearing Locknuts -For Inch/For Metric-



The Bearing Locknuts have fine and coarse threads in both inch and metric for controlled tightening against subject shaft/bearing assemblies. Choose from various styles and materials.

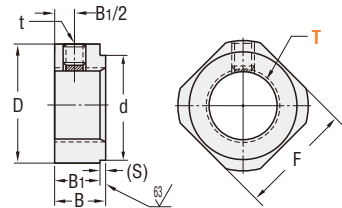
Bearing Locknuts -For Inch-



Material	Surface Treatment	Included Hardware	Type	
			Fine Thread	Coarse Thread
1045 Steel	Black Oxide	Set Screw (Alloy Steel) Crush Pad (Copper Alloy)	U-BNR	U-BNG
304 Stainless Steel	-	Set Screw (304 Stainless Steel) Crush Pad (Copper Alloy)	U-BNRS	U-BNGS

Material Characteristics P.628, 629

Surface Roughness: Unless otherwise specified $250 \sqrt{}$



Type	Part No.	(Thread) Thread Size		Major Dia.	D	d	F	B1	B	(S)	t	Compatible Inch Bearing No.	\$ Unit Price (Qty. 1-19)	
		U-BNR	U-BNG										U-BNRS	U-BNGS
Fine Thread U-BNR U-BNRS	10	#10-32	#10-24	0.190	0.44	0.250	0.375	0.188	0.219	0.031	#2-56	RA3	4.30	6.50
	0.25	1/4-28	1/4-20	0.250	0.56	0.330	0.438	0.219	0.250	0.031	#4-40	R4, RA4	4.30	6.50
	0.38	3/8-24	3/8-16	0.375	0.69	0.438	0.563	0.250	0.313	0.063	#5-40	R6	4.10	6.10
	0.50	1/2-20	1/2-13	0.500	0.88	0.625	0.750	0.375	0.438	0.063	#6-32	R8	4.40	6.70
Coarse Thread U-BNG U-BNGS	0.63	5/8-18	5/8-11	0.625	1.13	0.875	0.938	0.375	0.438	0.063	#8-32	R10	4.90	7.40
	0.75	3/4-16	3/4-10	0.750	1.38	1.000	1.125	0.375	0.438	0.063	#8-32	R12	5.20	7.80
	0.88	7/8-14	7/8-9	0.875	1.50	1.188	1.250	0.500	0.563	0.063	#10-32	R14	6.60	10.00
	1.00	1-12	1-8	1.000	1.69	1.313	1.375	0.500	0.563	0.063	#10-32	R16	6.70	10.10

Tighten the set screw after inserting the crush pad. The part number consists only of the fields with blue characters.

Order Example

Part No.

Type

General Tolerance		
From	To	Tolerance
0.000	5.000	± 0.01
5.001	16.000	± 0.02
16.001	60.000	± 0.05

Thread or hole location tolerance: $\pm 0.005'$ non-cumulative.

Days to Ship **1** Day

Price

Quantity	1-19	20-49	50-99	100-
Rate	—	2%	3%	5%

For larger quantity orders "Days to Ship" may differ from published catalog term. P.29

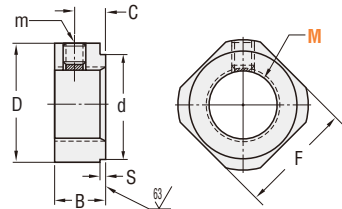
Bearing Locknuts -For Metric-



Material	Surface Treatment	Included Hardware	Type	
			Fine Thread	Coarse Thread
1018 Steel	Black Oxide	Set Screw (Alloy Steel) Crush Pad (Copper Alloy)	BNR	BNG
304 Stainless Steel	-	Set Screw (304 Stainless Steel) Crush Pad (Copper Alloy)	BNRS	BNGS

Material Characteristics P.628, 629

Surface Roughness: Unless otherwise specified $250 \sqrt{}$



All dimensions shown are in mm.

Type	Part No.	M x Pitch (Metric Thread)		D	d	F	B	C	S	m	\$ Unit Price (Qty. 1-19)	
		BNR, BNRS	BNG, BNGS								BNR, BNG	BNRS, BNGS
Fine Thread BNR BNRS	3	M 3 x 0.35	M 3 x 0.5	11.5	4	10	5.5	3	0.5	M3	4.00	6.00
	4	M 4 x 0.5	M 4 x 0.7	11.5	5	10	5.5	3	0.5	M3	3.90	5.90
	5	M 5 x 0.5	M 5 x 0.8	13.5	9	11	5.5	3	0.5	M3	3.60	5.40
	6	M 6 x 0.75	M 6 x 1.0	14.5	10	12	5.5	3	0.5	M3	3.60	5.40
Coarse Thread BNG BNGS	8	M 8 x 1.0	M 8 x 1.25	17	13	14	6.5	4	0.5	M3	3.40	5.10
	10	M 10 x 1.0	M 10 x 1.5	20	16	17	8	5	1	M4	3.40	5.10
	12	M 12 x 1.0	M 12 x 1.75	22	17	19	8	5	1	M4	3.70	5.60
	15	M 15 x 1.0	-	25	21	22	10	6	1	M4	4.10	6.20
	16	-	M 16 x 2.0	25	21	22	10	6	1	M4	4.10	6.20
	20	M 20 x 1.0	M 20 x 2.5	35	26	30	13	8	1	M4	4.30	6.50
24	-	M 24 x 3.0	43	33	35	15	10	2	M5	5.50	8.30	
25	M 25 x 1.5	-	43	33	35	15	10	2	M5	5.60	8.40	
30	M 30 x 1.5	M 30 x 3.5	48	39	40	20	14	2	M6	6.40	9.60	

Tighten the set screw after inserting the crush pad. The part number consists only of the fields with blue characters. Not available for BNG15, BNGS15, BNR16, BNRS16, BNR24, BNRS24, BNG25 and BNGS25.

Order Example

Part No.

Type

Days to Ship **3** Days

Price

Quantity	1-19	20-49	50-99	100-
Rate	—	2%	3%	5%

For larger quantity orders "Days to Ship" may differ from published catalog term. P.29

Related Components

Shaft Collars P.143

Rotary Shafts P.205

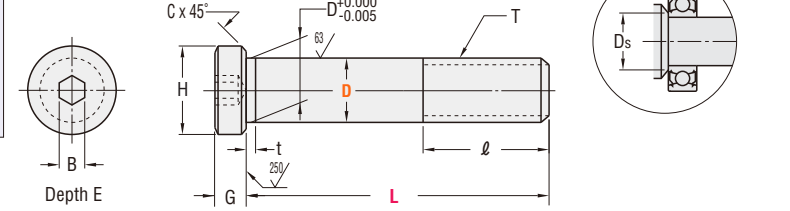
Cantilever Shafts P.231

Bearing Shaft Screws



Material	Surface Treatment	Type
1045 Steel	Black Oxide	U-BGP
	Electroless Nickel Plating	U-BGPM
304 Stainless Steel	-	U-BGPS

Material Characteristics P.628, 629



General Tolerance		
From	To	Tolerance
0.000	5.000	± 0.01
5.001	16.000	± 0.02
16.001	60.000	± 0.05

Thread or hole location tolerance: $\pm 0.005'$ non-cumulative.

Surface Roughness: Unless otherwise specified $100 \sqrt{}$

Type	Part No.	D		L Selection						H	G	B	E	T (Thread)	l	t	C	Ds	Compatible Inch Bearing No.	
		Callout	Tolerance	5/8	3/4	1"	1-1/4	1-1/2	2"											2-1/2
U-BGP U-BGPM U-BGPS	0.19	0.1874	0.1871	0.63	0.75	1.00					0.250	0.094	0.109	0.078	#10-32	0.250	0.050	0.010	0.230	RA3
	0.25	0.2498	0.2494	0.75	1.00	1.25					0.330	0.094	0.125	0.094	1/4-20	0.375	0.063	0.010	0.310	R4, RA4
	0.38	0.3748	0.3744	1.00	1.25	1.50					0.438	0.125	0.188	0.151	3/8-16	0.500	0.063	0.010	0.418	R6
	0.50	0.4998	0.4994	1.25	1.50	2.00					0.625	0.125	0.250	0.188	1/2-13	0.625	0.063	0.010	0.605	R8
	0.63	0.6248	0.6244	1.50	2.00	2.50					0.875	0.156	0.313	0.245	5/8-11	0.750	0.063	0.010	0.855	R10
	0.75	0.7497	0.7492	1.50	2.00	2.50					1.000	0.156	0.375	0.307	3/4-10	0.750	0.063	0.010	0.980	R12
	0.88	0.8747	0.8742	1.50	2.00	2.50					1.188	0.188	0.500	0.375	7/8-9	0.750	0.063	0.010	1.168	R14
	1.00	0.9997	0.9992	1.50	2.00	2.50					1.313	0.188	0.500	0.375	1-8	0.750	0.063	0.010	1.293	R16

Order Example

Part No.

Type

Days to Ship **6** Days

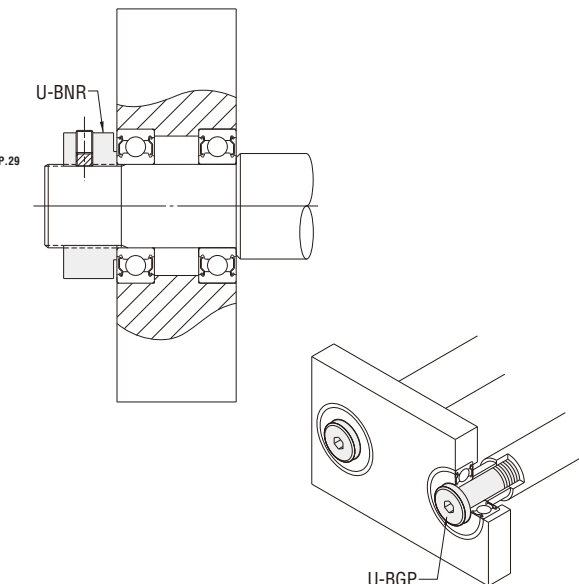
Example

Price

Quantity	1-19	20-49	50-99	100-
Rate	—	5%	10%	15%

For larger quantity orders "Days to Ship" may differ from published catalog term. P.29

D	\$ Unit Price (Qty. 1-19)		
	U-BGP	U-BGPM	U-BGPS
0.19	5.40	6.70	9.50
0.25	5.90	7.30	10.70
0.38	7.70	9.60	16.10
0.50	8.90	12.00	17.90
0.63	14.90	19.30	23.50
0.75	17.90	23.20	29.30
0.88	20.50	26.50	35.30
1.00	23.00	29.80	40.90



Contents

How to Use the Catalog

Linear Motion

Linear Shafts

Bushings

Shaft Supports

Shaft Collars

Linear Guides

Rotary Motion

Rotary Shafts

Bearings w/ Housings

Pulleys Belts Couplings

Locating Components

Locating Pins & Bushings

Locating Components

General Components

Pivot Pins

Floating Joints

Posts

Device Stands

Strut Clamps

Angle Plates

Gussets

Welded Stands

Washers

Collars

Manifolds

Urethanes

Rubbers

Plates

Misc.

Technical Data

Business Information

Index

Express Options P.30

MISUMI
www.misumiusa.com E-mail: inquire@misumiusa.com