

Shaft Collars –With Damper, Clamp–



The Collars are usually used with shafts in rotary or linear applications. This particular Collar type has an integrated dampening urethane material on one side. This feature can work in a variety of applications (i.e. with cylinder shafts or with walking beam applications)



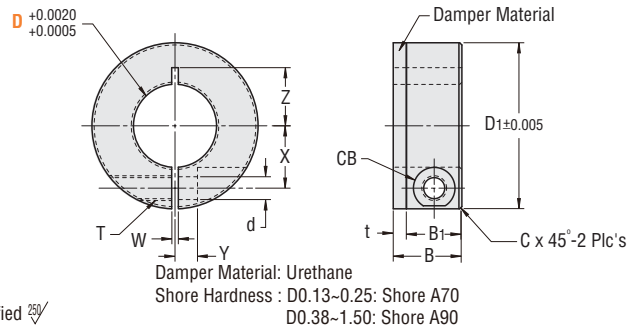
☐ New Price

Clamp



Material	Surface Treatment	Included Hardware & Material	Type
1045 Steel	Black Chromate	Steel S.H.C.S. (1 Piece)	U-SCD
	Electroless Nickel Plating	Stainless Steel S.H.C.S. (1 Piece)	U-PSCD
304 Stainless Steel	-	-	U-SSCD

Material Characteristics P.628, 629



General Tolerance

Unless otherwise specified use the table below.

From	To	Tolerance
0.000	5.000	+0.01
5.001	16.000	+0.02
16.001	60.000	+0.05

Thread or hole location tolerance: +0.005 non-cumulative.

Surface Roughness: Unless otherwise specified

Type	Part No.			\$ Unit Price (Qty. 1-9)		
	Callout	D	Actual	U-SCD	U-PSCD	U-SSCD
U-SCD U-PSCD U-SSCD	0.13	1/8	0.1250	11.00	11.50	11.60
	0.19	3/16	0.1875	12.50	13.10	13.30
	0.25	1/4	0.2500	12.60	13.10	13.30
	0.38	3/8	0.3750	12.70	13.20	13.40
	0.50	1/2	0.5000	13.40	14.00	14.20
	0.63	5/8	0.6250	14.60	15.20	15.50
	0.75	3/4	0.7500	15.40	16.10	16.30
	1.00	1"	1.0000	17.60	18.40	18.70
	1.25	1-1/4	1.2500	19.80	20.60	21.00
	1.50	1-1/2	1.5000	34.60	36.10	36.70

Order Example

Part No.

Type D

U-SCD 0.38

Dampers are adhered with an acrylic-type double-sided adhesive tape.

Technical Information

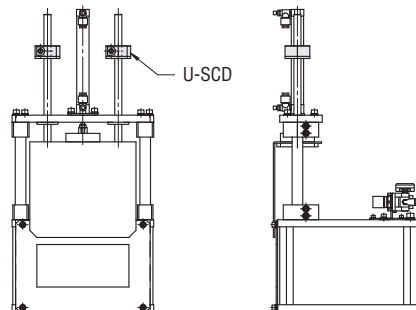
D	D1	B1	t	T (Thread)		Z	W	X	Y	C	d	CB	B
				Size	Major Dia.								
0.13	0.500	0.250	0.090	#4-40	0.112	0.141	0.040	0.154	0.069	0.010	0.118	0.188	0.340
0.19	0.625	0.313	0.090	#4-40	0.112	0.172	0.040	0.202	0.089	0.010	0.125	0.219	0.403
0.25	0.688	0.313	0.090	#4-40	0.112	0.219	0.040	0.234	0.100	0.010	0.125	0.219	0.403
0.38	0.875	0.375	0.090	#6-32	0.138	0.290	0.060	0.313	0.141	0.010	0.154	0.281	0.465
0.50	1.125	0.438	0.120	#8-32	0.164	0.375	0.060	0.406	0.141	0.010	0.180	0.312	0.558
0.63	1.313	0.438	0.120	#10-32	0.190	0.438	0.060	0.484	0.203	0.010	0.206	0.375	0.558
0.75	1.500	0.500	0.120	#10-32	0.190	0.525	0.060	0.563	0.203	0.010	0.206	0.375	0.620
1.00	1.750	0.500	0.160	1/4-28	0.250	0.650	0.080	0.678	0.281	0.020	0.265	0.438	0.660
1.25	2.063	0.500	0.160	1/4-28	0.250	0.750	0.080	0.828	0.313	0.020	0.265	0.438	0.660
1.50	2.375	0.563	0.160	1/4-28	0.250	0.875	0.080	0.968	0.344	0.020	0.265	0.438	0.723



1 Day



Example



Quantity Discount Rate

Quantity	Rate
1-9	—
10-29	2%
30-49	3%
50~	5%

For larger quantity orders "Days to Ship" may differ from published catalog term. P.29

Shaft Collars –With Damper, Split–



The Collars are usually used with shafts in rotary or linear applications. This particular Collar type has an integrated dampening urethane material on one side. This feature can work in a variety of applications (i.e. with cylinder shafts or with walking beam applications)



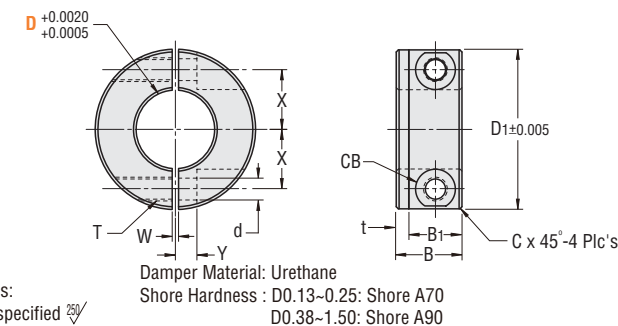
☐ New Price

Split



Material	Surface Treatment	Included Hardware & Material	Type
1045 Steel	Black Chromate	Steel S.H.C.S. (2 Pieces)	U-SCSPD
	Electroless Nickel Plating	Stainless Steel S.H.C.S. (2 Pieces)	U-PSCSPD

Material Characteristics P.628, 629



General Tolerance

Unless otherwise specified use the table below.

From	To	Tolerance
0.000	5.000	+0.01
5.001	16.000	+0.02
16.001	60.000	+0.05

Thread or hole location tolerance: +0.005 non-cumulative.

Surface Roughness: Unless otherwise specified

Type	Part No.			\$ Unit Price (Qty. 1-9)	
	Callout	D	Actual	U-SCSPD	U-PSCSPD
U-SCSPD U-PSCSPD	0.13	1/8	0.1250	11.00	11.50
	0.19	3/16	0.1875	12.50	13.10
	0.25	1/4	0.2500	12.60	13.10
	0.38	3/8	0.3750	12.70	13.20
	0.50	1/2	0.5000	13.40	14.00
	0.63	5/8	0.6250	14.60	15.20
	0.75	3/4	0.7500	15.40	16.10
	1.00	1"	1.0000	17.60	18.40
	1.25	1-1/4	1.2500	19.80	20.60
	1.50	1-1/2	1.5000	34.60	36.10

Order Example

Part No.

Type D

U-SCSPD 0.38

Dampers are adhered with an acrylic-type double-sided adhesive tape.

Technical Information

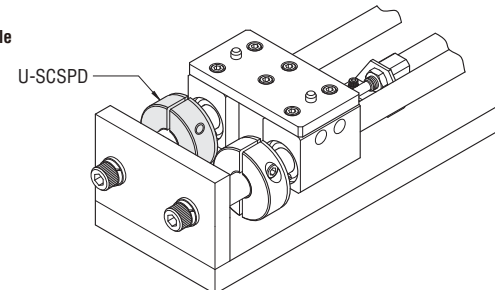
D	D1	B1	t	T (Thread)		W	X	Y	C	d	CB	B
				Size	Major Dia.							
0.13	0.500	0.250	0.090	#4-40	0.112	0.040	0.154	0.069	0.010	0.118	0.188	0.340
0.19	0.625	0.313	0.090	#4-40	0.112	0.040	0.202	0.089	0.010	0.125	0.219	0.403
0.25	0.688	0.313	0.090	#4-40	0.112	0.040	0.234	0.100	0.010	0.125	0.219	0.403
0.38	0.875	0.375	0.090	#6-32	0.138	0.060	0.313	0.141	0.010	0.154	0.281	0.465
0.50	1.125	0.438	0.120	#8-32	0.164	0.060	0.406	0.141	0.010	0.180	0.312	0.558
0.63	1.313	0.438	0.120	#10-32	0.190	0.060	0.484	0.203	0.010	0.206	0.375	0.558
0.75	1.500	0.500	0.120	#10-32	0.190	0.060	0.563	0.203	0.010	0.206	0.375	0.620
1.00	1.750	0.500	0.160	1/4-28	0.250	0.080	0.678	0.281	0.020	0.265	0.438	0.660
1.25	2.063	0.500	0.160	1/4-28	0.250	0.080	0.828	0.313	0.020	0.265	0.438	0.660
1.50	2.375	0.563	0.160	1/4-28	0.250	0.080	0.968	0.344	0.020	0.265	0.438	0.723



1 Day



Example



Quantity Discount Rate

Quantity	Rate
1-9	—
10-29	2%
30-49	3%
50~	5%

For larger quantity orders "Days to Ship" may differ from published catalog term. P.29