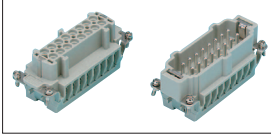


Information on Components Used

Connector / Hood

E Type

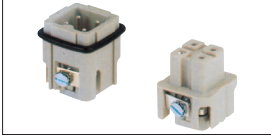


Connector	
Manufacturer	Harding
Model Number	0933
Rated Current	16A or less
Rated Voltage	VDE 380 VAC UL, CSA 600 VAC
More Information	OP.122

Hood

For details, refer to the product page.
 1S 1-Lever Type Straight **OP.132**
 2S 2-Lever Type Straight **OP.133**
 1L 1-Lever Type Angle **OP.134**
 2L 2-Lever Type Angle **OP.135**

A Type



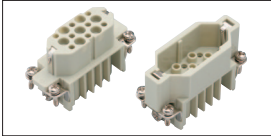
Connector	
Manufacturer	Harding
Model Number	0920
Rated Current	10A or less
Rated Voltage	VDE 3-Core Only, 250 VAC Other Than 3-Core, 380 VAC UL, CSA 600 VAC
More Information	OP.124

E Type



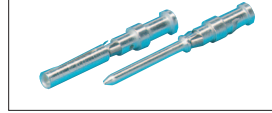
Cable Clamp	
Manufacturer	Harding
Model Number	0900
Size	Changes by Hood Size
More Information	OP.138

DD Type



Connector	
Manufacturer	Harding
Model Number	0916
Rated Current	10A or less
Rated Voltage	VDE 250 VAC UL, CSA 600 VAC
More Information	OP.127

E Type



Contact	
Manufacturer	Harding
Model Number	0915
Size	AWG20 as a rule
More Information	OP.136

Connector Included Cable Selection Method

Square Connector Included Cable

Coaxial Connector Included Cable

Round Connector Included Cable

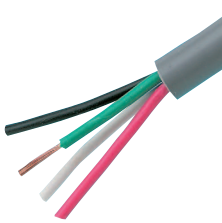
Nylon Connector Included Cable

Custom Service

Connector Included Cable Documents

Multi-Core Cable

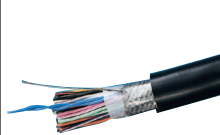
A Cable



Manufacturer	—
Model Number	VCTF
Standard Acquired	PSE Law (With Exceptions)
Rated Voltage	300 V
Rated Temperature	60°C
Flame Retardance	—
Bending Radius mm (Fixed Parts)	Finished Outer Diameter x 6
Bending Radius mm (Movable Parts)	—
More Information (Reference)	OP.1171

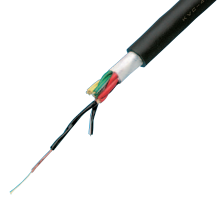
The manufacturer varies depending on the number of cores.

B Cable



Manufacturer	Tachii Electric Wire
Model Number	UL2464SSB
Standard Acquired	AWM2464
Rated Voltage	300 V
Rated Temperature	80°C
Flame Retardance	WW-1
Bending Radius mm (Fixed Parts)	Finished Outer Diameter x 6
Bending Radius mm (Movable Parts)	—
More Information (Reference)	OP.1283

C Cable



Manufacturer	Kuramo Electric
Model Number	KVC43BX
Standard Acquired	—
Rated Voltage	For Weak Current Circuit
Rated Temperature	75°C
Flame Retardance	—
Bending Radius mm (Fixed Parts)	Finished Outer Diameter x 4
Bending Radius mm (Movable Parts)	Finished Outer Diameter x 7.5
More Information (Reference)	OP.1549